



Cable Walk, SE10

£400,000

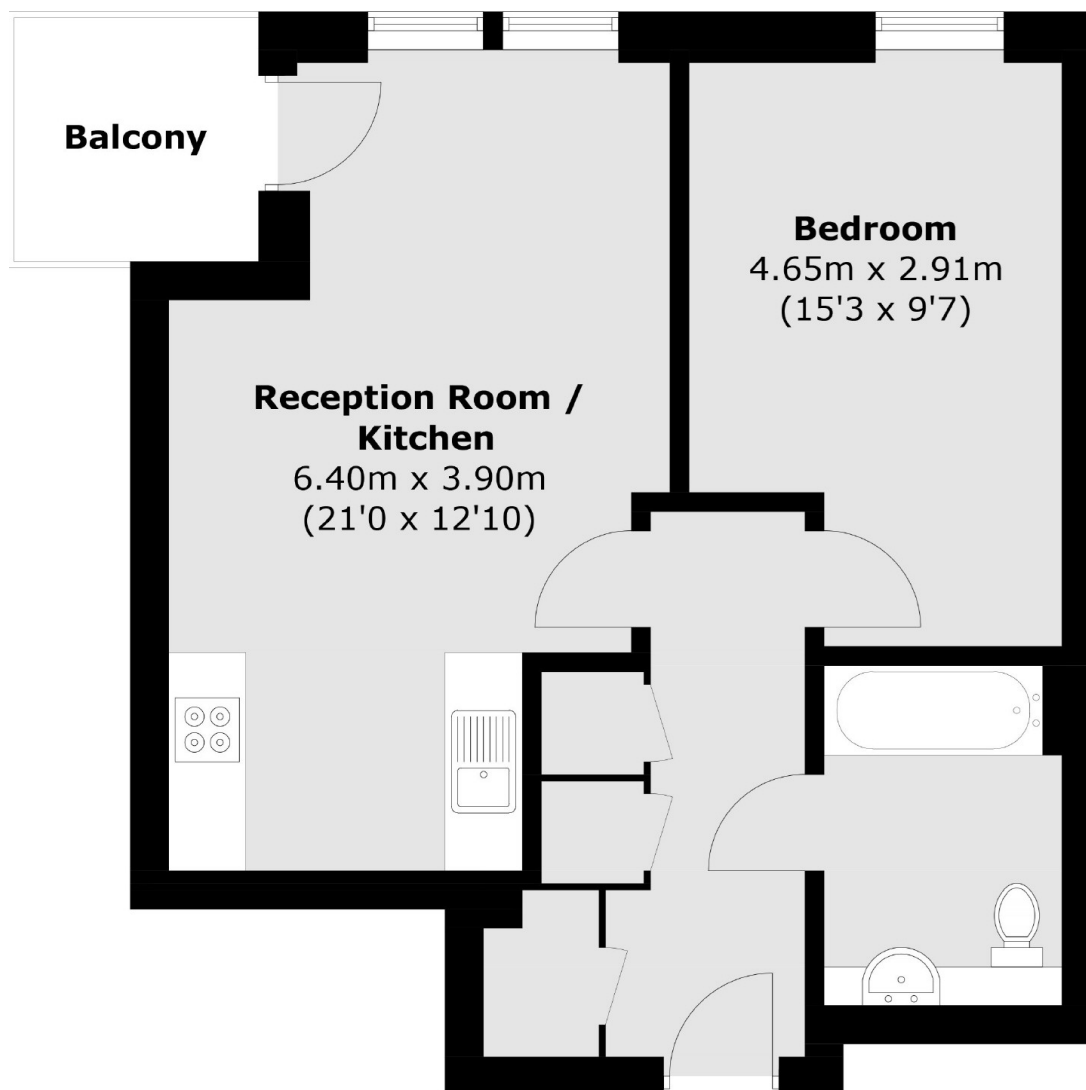
This well presented and light filled apartment is in great order throughout with a sunny private balcony, bundles of natural light and an open plan kitchen living space as well as one double bedroom and a modern bathroom. The property further benefits from a residence concierge as well as being chain free and a private rear balcony with amazing riverside views.

The apartment is moments from the Thames Path and just a short walk into Greenwich town centre which offers a vibrant mix of independent cafes restaurants, shops and markets and Greenwich Royal Park is also in close proximity. Conveniently located for Maze Hill Station for (London Bridge, Cannon Street and Thameslink services) North Greenwich for the Jubilee Line, Cutty Sark DLR and the Thames Clipper services into Canary Wharf and Central London.

Features

- Amazing River Views
- Modern Apartment
- Sought After Location
- Private Location
- Chain Free
- Communal Gardens

Cable Walk, London, SE10



Total area (approx.): 48.5 sq. m (522.0 sq. ft)
Balcony : 3.6 sq. m (38.7 sq. ft)