



Hyde Vale, SE10

£675,000

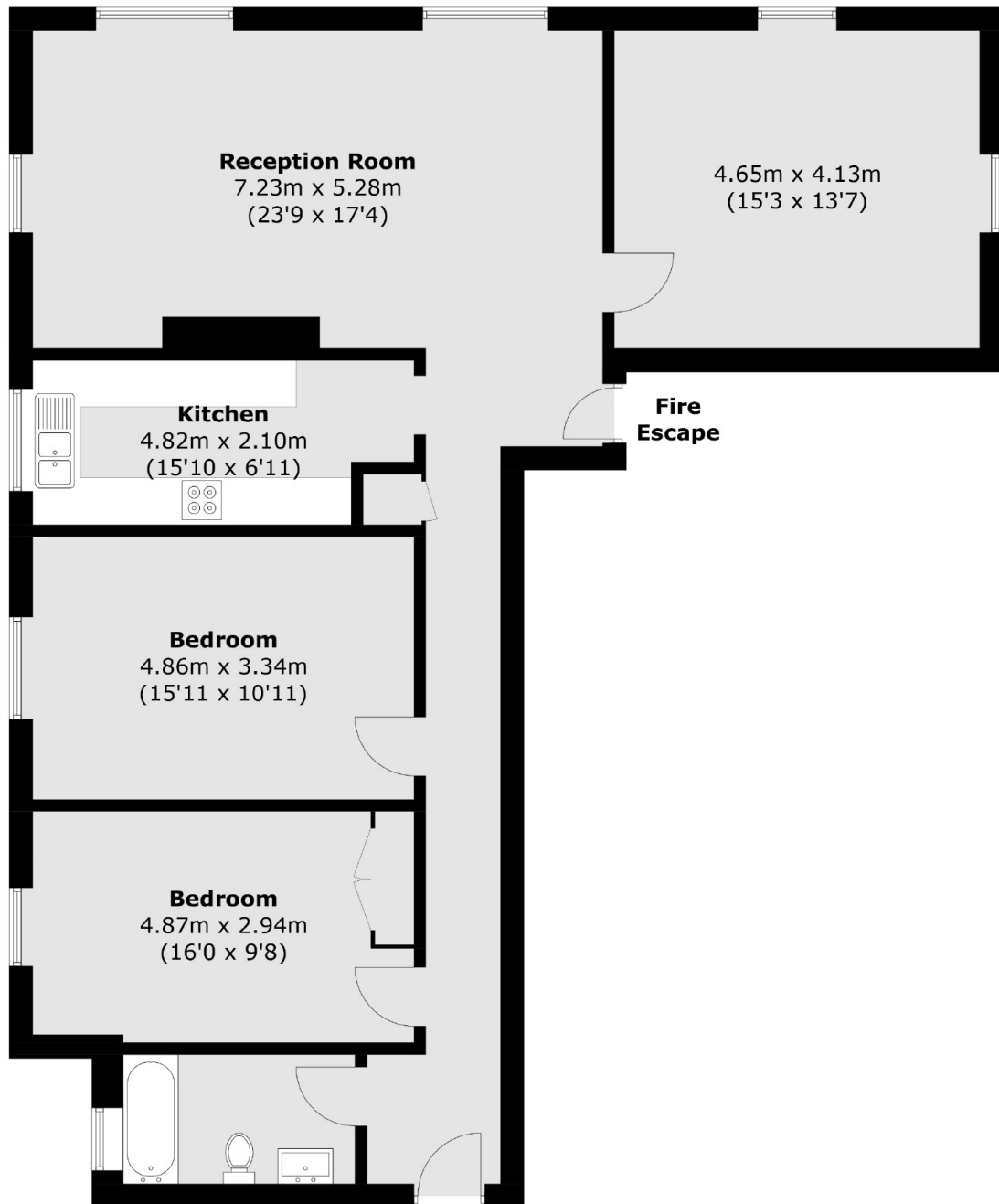
A charming, large, three bedroom top floor apartment measuring in excess of 1200sq feet sat within a stunning Art Deco building, which is located just at the top of Hyde Vale, arguably one of the best locations in west Greenwich. The property further benefits from a secluded communal garden and lift access, fronting the open heath.

Hyde Vale is a sweeping road in West Greenwich within easy reach of all of Greenwich's shops, bars and restaurants as well as the historical places of interest such as the National Maritime Museum, Royal Observatory and the Royal Naval College. It's a short walk from both Cutty Sark and Greenwich DLR stations as well as the Mainline Rail Station at Greenwich giving fast and convenient access into Canary Wharf and the City.

Features

- Three Bedrooms
- Wonderful Views Of Blackheath
- Secluded Communal Gardens
- Lift Access
- Art Deco Building
- In Excess Of 1200sq Feet

Hyde Vale,
London, SE10



Total area (approx.): 113.4 sq. m (1,220.6 sq. ft)