



Billingshurst Way, SE10

£375,000

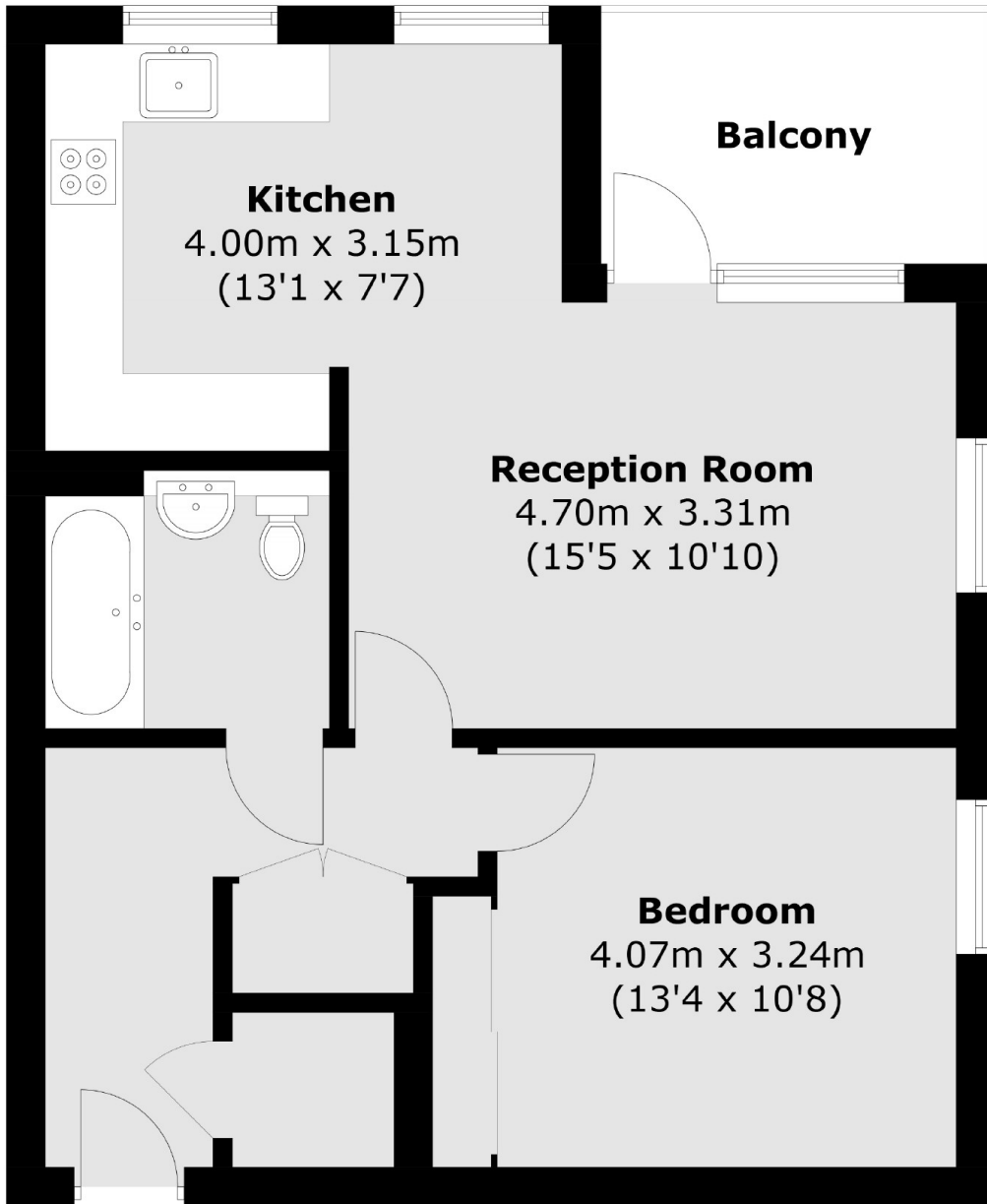
This contemporary apartment, constructed in 2019, boasts a spacious and well-lit interior. The living space includes a modern bathroom, a generous sized double bedroom with built-in wardrobes, and a well-appointed kitchen with fully integrated appliances, this space blends seamlessly into the living room, where an effortless transition leads to an expansive suntrap balcony, creating a private haven drenched in sunlight.

Situated in the sought-after North Greenwich Peninsula, Transportation is effortlessly accessible. The Jubilee Line is conveniently located a short distance away, The proximity to key attractions such as the River Thames, the O2 arena, Greenwich Town Centre, and Canary Wharf adds to the appeal of the location.

Features

- Close To North Greenwich Station
- 24 Hour Concierge
- Balcony
- Large Bedroom
- No Chain
- EWS1 Certified

Billingshurst Way,
London, SE10



Total area (approx.): 55.5 sq. m (597.4 sq. ft)
Balcony area: 5.8 sq. m (62.4 sq. ft)