



Feathers Place, SE10

£1,250,000

This charming end of terrace town house is situated in an ideal location with views of Greenwich park. This family home benefits from four bedrooms, three bathrooms, two receptions rooms, downstairs W.C and off street parking for two cars.

Feathers Place is a quiet residential road nestled on the north border of Greenwich Park nestled within moments of not only the park but the Queens House, the National Maritime Museum and the Royal Naval College. Maze Hill Station is a few moments' walk away providing swift and regular connections to London Bridge, Cannon Street and Kings Cross while Cutty Sark DLR Station is also within easy reach.

Features

- Chain Free
- Off Street Parking For Two Cars
- Sought After Location
- Views Over Greenwich Park
- Four Bedrooms
- Three Bathrooms



Feathers Place, SE10

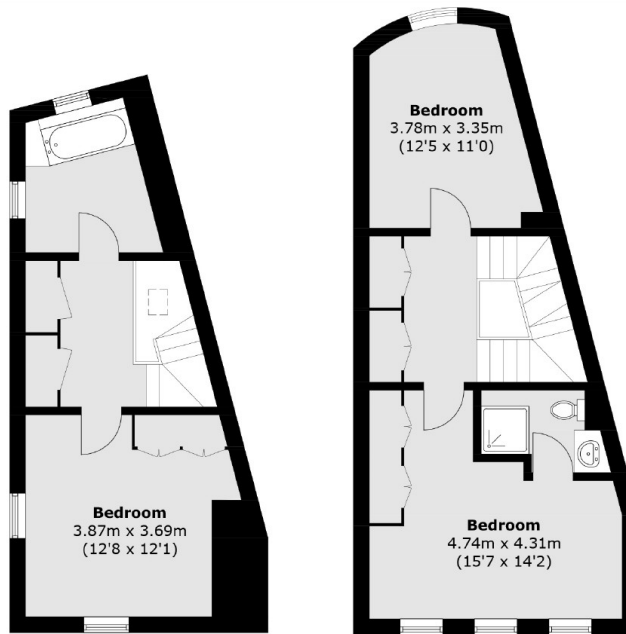
Layered across four storeys the property is uniquely shaped offering versatile living and entertaining space as well as dual aspect views across Greenwich, on the ground floor you will find the kitchen diner with access to the courtyard garden as well as a separate study and W.C.

The first floor offers either a second reception room or large second bedroom as well as a bedroom with en-suite, on the second floor you have the master bedroom also with an en-suite, the fourth bedroom which shares the family bathroom on the fourth floor with the final bedroom.

The property further benefits from gated off street parking for two cars.

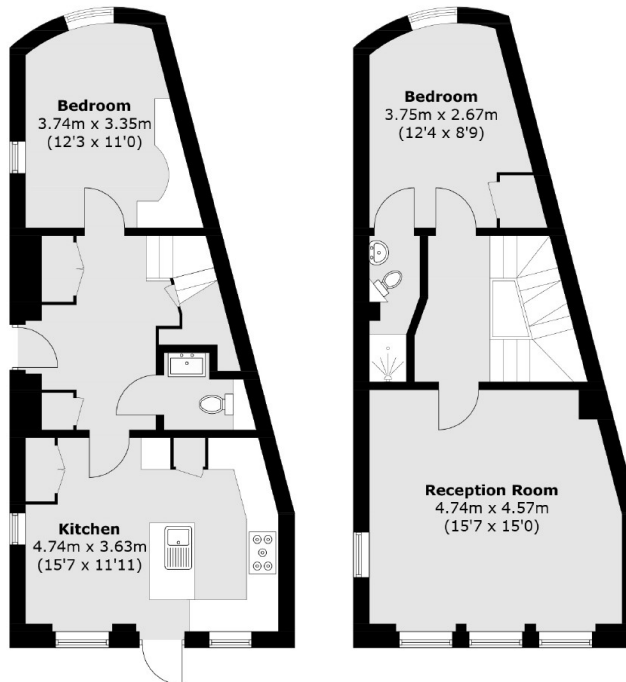


Feathers Place, London, SE10



Third Floor

Second Floor



Ground Floor

First Floor

Total area (approx.): 156.9 sq. m (1,688.6 sq. ft)