



Dowells Street, SE10

£1,150,000

An opportunity to acquire this amazing two double bedroom, three bathroom duplex penthouse situated in this desirable peaceful development with concierge facilities. The apartment benefits from a private balcony with breath-taking views of the river and City skyline and further benefiting from a private roof terrace.

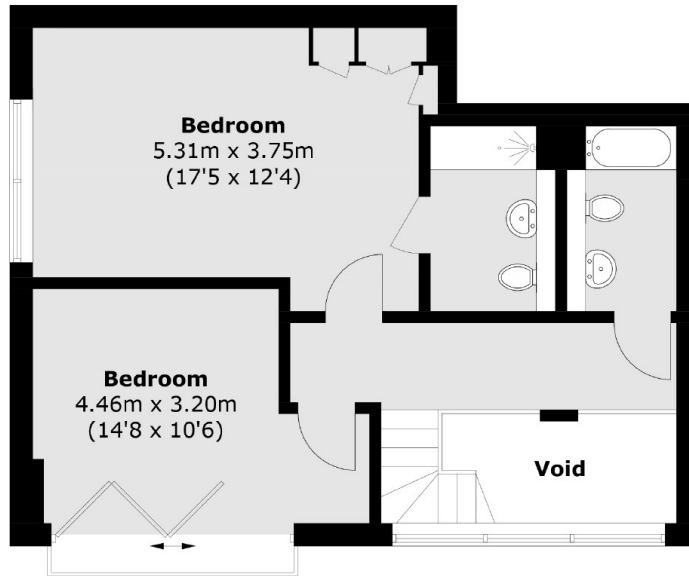
Beacon Point is set within a peaceful residential development moments away from the array of amenities and attractions found in nearby Greenwich Village. For great transport links into central London, Cutty Sark and Greenwich Stations are also close by.

Features

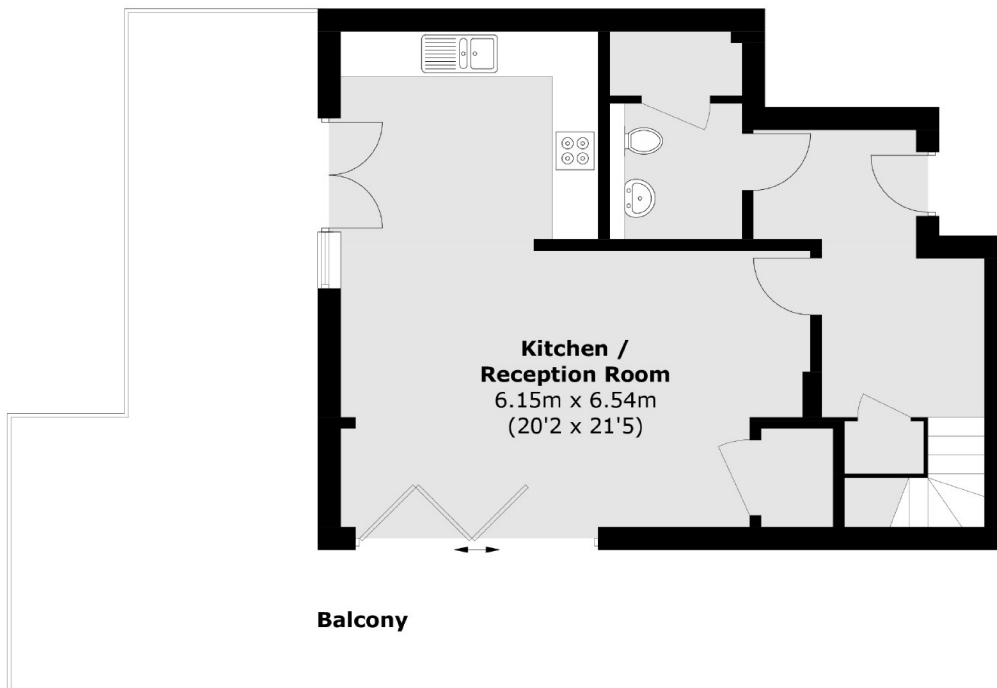
Duplex Penthouse
Immaculate Throughout
City Skyline Views
Private Parking

Secure Modern Development
With Concierge

Dowells Street,
London, SE10



Tenth Floor



Ninth Floor

Total area (approx.): 98.5 sq. m (1,060.2 sq. ft)
(Excluding Void)
Balcony: 44.7 sq. m (481.1 sq. ft)