



Burgos Grove, SE10

£950,000

This exceptional three Bedroom Victorian family home that has been sympathetically restored and renovated to a high standard boasting period features throughout and further benefits from being situated in the Ashburnham Triangle conservation area.

Burgos Grove is a quiet residential no through road located in the desirable Ashburnham Triangle in West Greenwich. Greenwich Mainline and DLR Station is a short walk away providing direct connections to Canary Wharf, Bank, London Bridge, Cannon Street and Kings Cross. There is a choice of local pubs and restaurants nearby while the Greenwich Park and Greenwich Market are both within easy reach.

Features

Sympathetically Restored
Period Features Throughout
Sought After Location
Ashburnham Triangle
Conservation Area
Victorian Family Home
Close To Stations

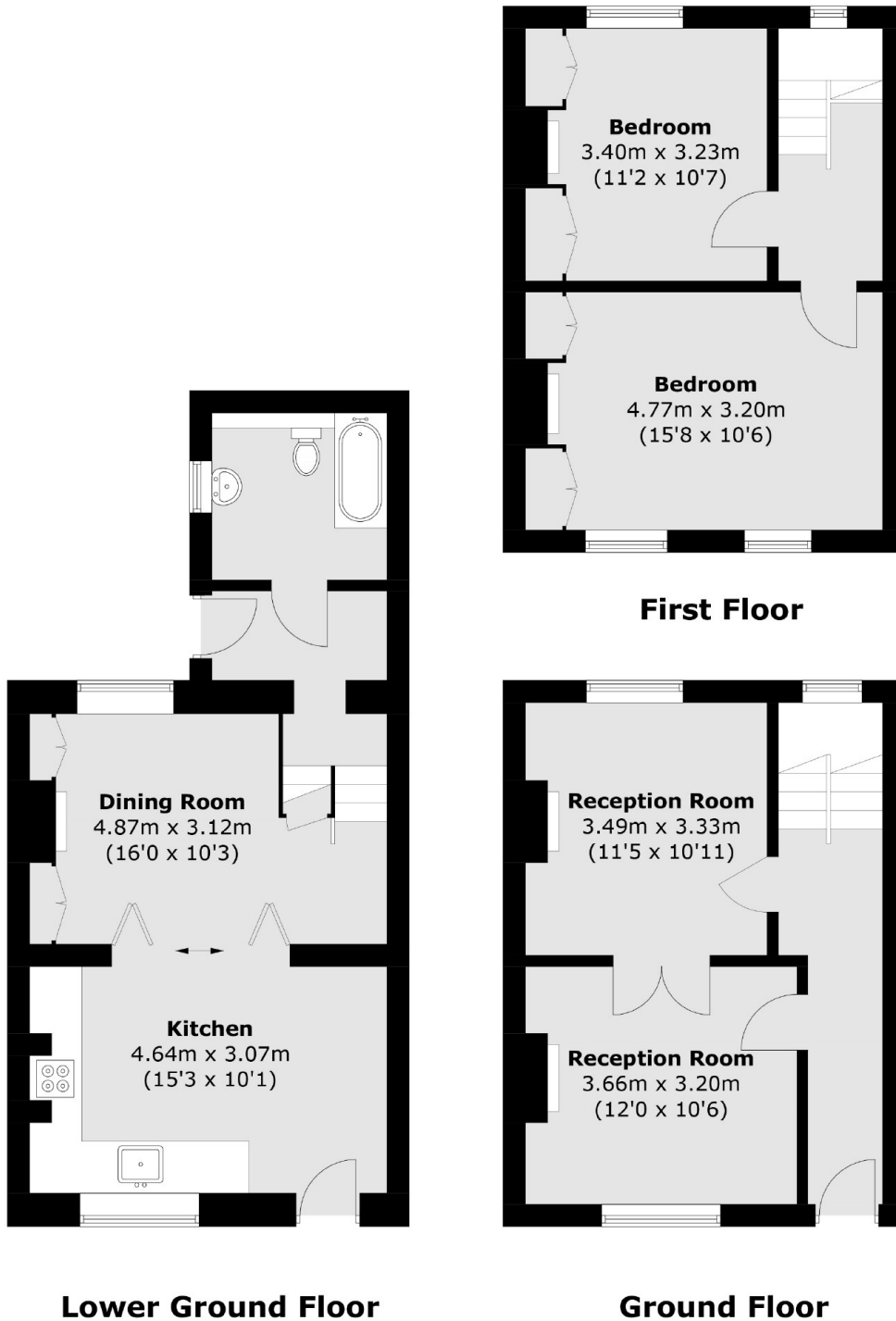


Burgos Grove, SE10

Entering on the first floor you're welcomed by an array of restored period features and Victorian marble tiling throughout the hallway, to the left you will find the versatile living space in the form of two reception rooms which can also be used as a study/third bedroom, on the ground floor you have the three piece family bathroom, access to the garden as well as the open kitchen and dining rooms, on this floor you also have a front courtyard with an under-stairs store room which can be converted into a second bathroom/shower room, on the top floor you have the two main generous sized bedrooms.



Burgos Grove, London, SE10



Total area (approx.): 105.8 sq. m (1,138.7 sq. ft)