



Guildford Grove, SE10

£1,250,000

A charming three double bedroom Victorian semi detached family home, Further benefiting from potential to extend STPP. Situated in the Ashburnham Triangle conservation area.

Conveniently located on the popular Ashburnham Triangle conservation area close to all transport links and amenities. The enviable location of this property makes commuting easy with Greenwich Station and the DLR close by providing links to the City and Canary Wharf in under 15 minutes. Greenwich village is also within easy reach with an array of shops, restaurants, bars and of course the Royal Park and The River Thames.

Features

- Chain Free
- South Facing Garden
- Sought After Location
- No Work Required
- Victorian Semi-Detached
- Three Double Bedrooms



Guildford Grove, SE10

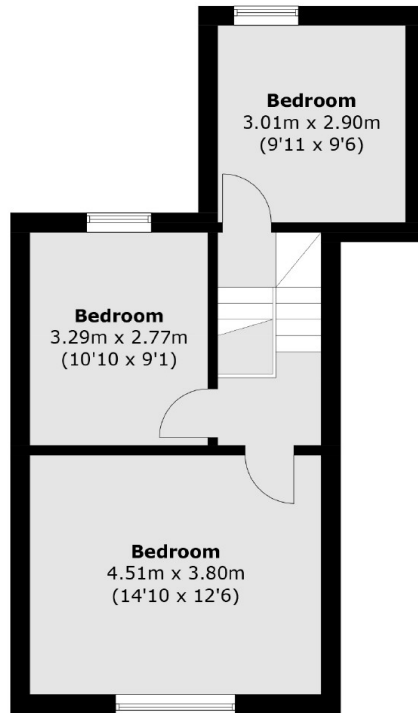
This Brick fronted Victorian semi-detached house circa 1850 has been lovingly looked after and updated throughout by its current owner. The accommodation is arranged over three storeys, the lower ground floor comprises a great, large kitchen / dining area, the kitchen is fully fitted out with Neff appliances, tonnes of drawers, storage cupboards and a breakfast bar.

There is also a bespoke made, built in dining area. Additionally and nicely tucked away is a separate utility room. The ground floor comprises a large hallway space, dual aspect through reception room and four piece family bathroom.

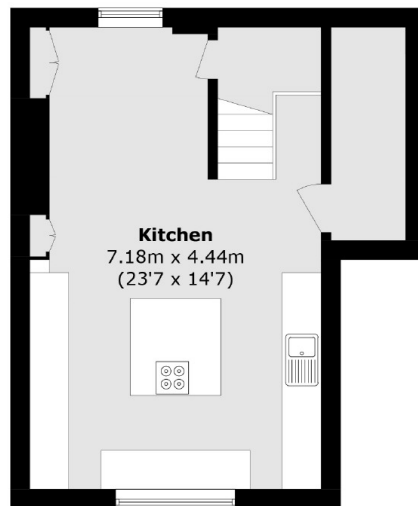
On the top floor you will find a large master bedroom and two further double bedrooms. Externally to the rear you will find a gorgeous, carefully designed, fully landscaped south facing garden.



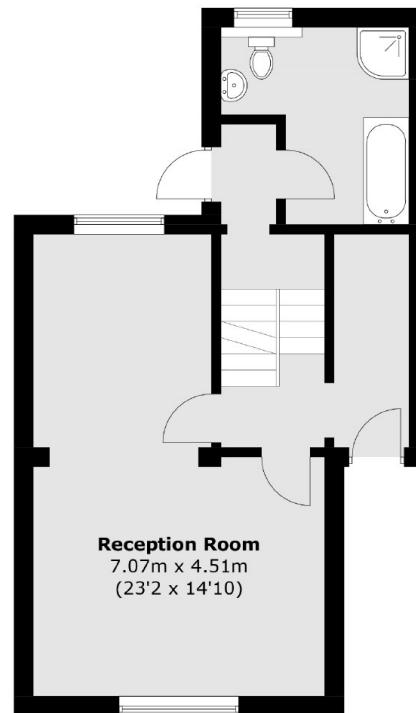
Guildford Grove, London, SE10



First Floor



Lower Ground Floor



Ground Floor

Total area (approx.): 123.8 sq. m (1,332.5 sq. ft)