



River Gardens Walk, SE10

£750,000

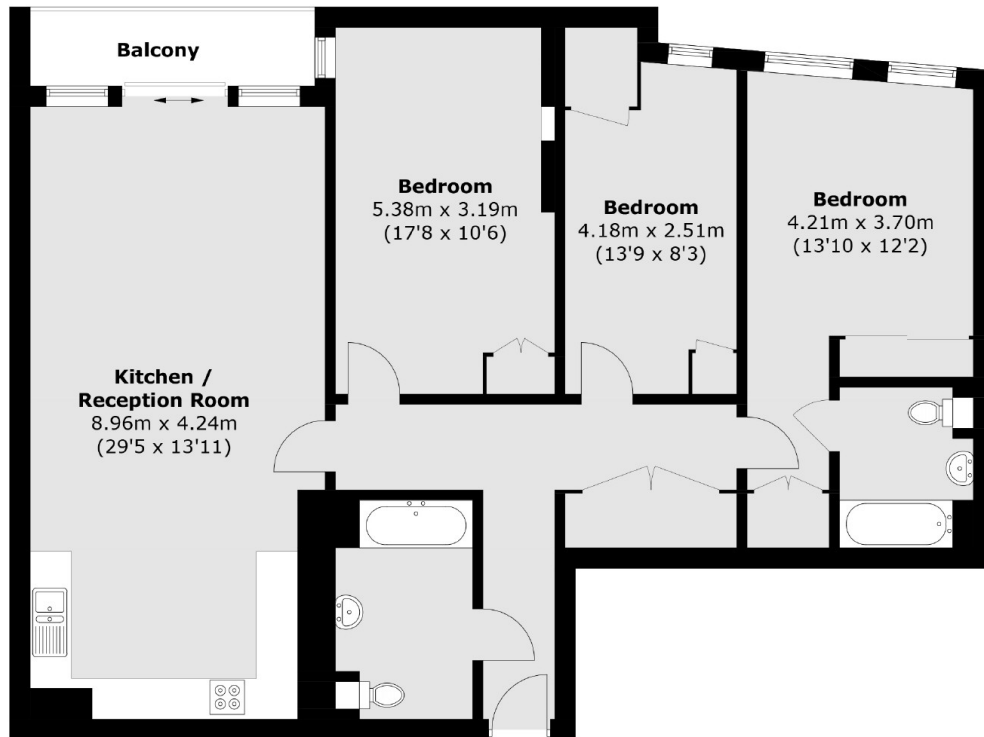
This stunning apartment further benefits from an OFSTED OUTSTANDING rated nursery which is based in the development, 24hr concierge and private garden accessible to the residents of River Gardens only.

The River Gardens development is located on the banks of the Thames and has a fantastic community feel with the beautiful Greenwich Park, Thames Pathway, University of Greenwich, the Old Naval College, National Maritime Museum, Royal Observatory, listed buildings and pubs of Greenwich town, and Greenwich Market. Maze Hill Rail Station is a short walk away and allows for a 13-15 minute journey into London Bridge station, the Cutty Sark DLR provides a direct link to Canary Wharf (Jubilee and Elizabeth Line) and Bank, while the North Greenwich Jubilee line and O2 Arena are easily accessible.

Features

Sought After Location
Amazing City Skyline Views
Gym
Tennis Courts
Swimming Pool
Three Bedrooms

River Gardens Walk, London, SE10



Total area (approx.): 115.4 sq. m (1,242.2 sq. ft)
Balcony area (approx.): 4.6 sq. m (49.5 sq. ft)