



1 Wyndene Close, Longridge, Preston, PR3 3UE

£499,950



A rare opportunity to be able to offer for sale a property on Wyndene Close in Longridge. This property is tastefully decorated and presented throughout offering accommodation over three floors. Ground floor: living room, WC. First floor: kitchen/diner, sitting room, two bedrooms, en-suite, WC. Second floor: two bedrooms, shower room. The property is approached by a spacious block paved driveway which leads to two garages. Lawned garden with mature hedging. To the rear there is a paved patio, decking and a raised lawned garden with mature hedging. Gas central heating, double glazed. Quiet position near to John Smith's Playing fields and within easy reach of all of the facilities in Longridge. Council Tax Band E. Freehold.













Road Map



Hybrid Map



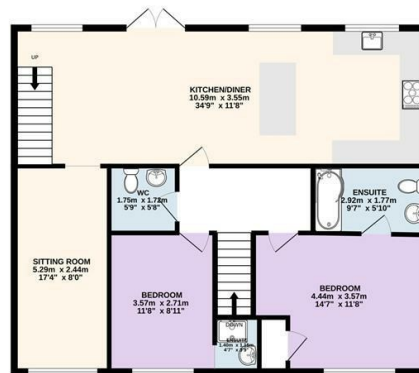
Terrain Map



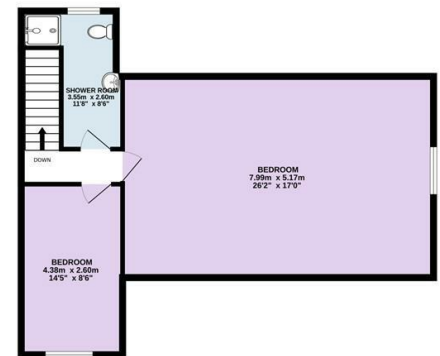
GROUND FLOOR
56.8 sq.m. (612 sq.ft.) approx.



1ST FLOOR
93.5 sq.m. (1,007 sq.ft.) approx.



2ND FLOOR
64.0 sq.m. (689 sq.ft.) approx.



TOTAL FLOOR AREA: 214.3 sq.m. (2,307 sq.ft.) approx.
Every attempt is made to ensure accuracy, however all measurements are approximate. This plan is for illustrative purposes only and is not to scale.
Made with Metropix ©2025

Viewing

Please contact our Longridge Office on 01772 233380 if you wish to arrange a viewing appointment for this property or require further information.

Misdescriptions Act

These particulars, whilst believed to be accurate are set out as a general outline only for guidance and do not constitute any part of an offer or contract. Intending purchasers should not rely on them as statements of representation of fact, but must satisfy themselves by inspection or otherwise as to their accuracy. No person in this firm's employment has the authority to make or give any representation or warranty in respect of the property.