



872 Whittingham Lane, Goosnargh, Preston, PR3 2AX

£179,950

 3  1  1  D

Holdens are pleased to bring to the market this mid terraced property on a popular residential street in Whittingham enjoying open views to the rear. Accommodation comprising off: entrance porch, living room with wood burner, good size kitchen/diner, utility/rear porch. To the first floor there are three bedrooms and a bathroom. Externally there is an enclosed front garden, to the rear there is a flagged patio with step up to rear garden and gate through to two parking spaces. Double glazing is fitted, gas central heating. Conveniently positioned for all of the village facilities including shops, restaurants, bars, park and excellent motorway access. Freehold. Council Tax Band B.













Road Map



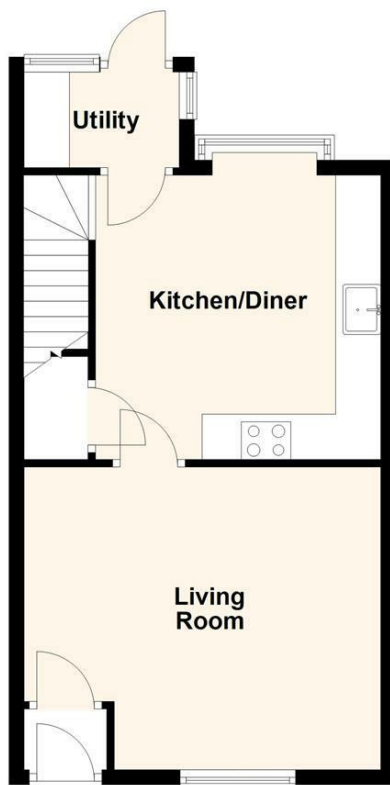
Hybrid Map



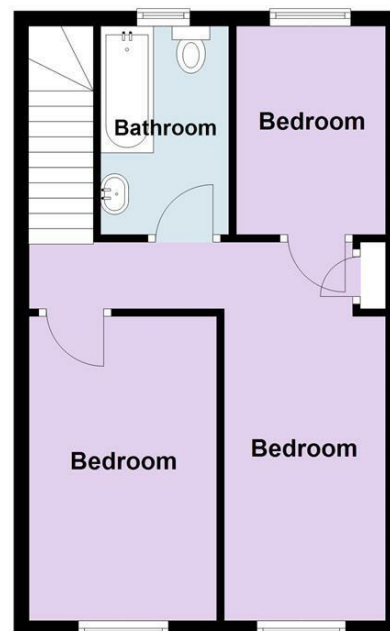
Terrain Map



Ground Floor



First Floor



Total area: approx. 77.6 sq. metres (835.1 sq. feet)

Every attempt is made to ensure accuracy, however all measurements are approximate. This plan is for illustrative purposes only and is not to scale.
Plan produced using PlanUp.

Viewing

Please contact our Longridge Office on 01772 233380 if you wish to arrange a viewing appointment for this property or require further information.

Misdescriptions Act

These particulars, whilst believed to be accurate are set out as a general outline only for guidance and do not constitute any part of an offer or contract. Intending purchasers should not rely on them as statements of representation of fact, but must satisfy themselves by inspection or otherwise as to their accuracy. No person in this firm's employment has the authority to make or give any representation or warranty in respect of the property.