



25 Water Meadows, Longridge, Preston, PR3 3BY

Offers Over £250,000

 3  2  1  C

Holden's are delighted to introduce to the market this lovely three bed roomed family home in the sought after location of Longridge. Ideal for small families this detached home is in ideal move in condition. The property comprises of an entrance hall which leads to a modern kitchen/Diner, a lovely large inviting living room and a downstairs wc. Up the stairs to the first floor are three bedrooms, an ensuite to the master and a family bathroom. The living room and the kitchen/diner both have double doors opening up onto a private rear southeast facing garden, ideal for relaxing or keeping an eye on children while they are playing out. There is a separate single garage and off road parking. Viewing is essential to fully appreciate all this wonderful property has to offer. EPC Rating B.

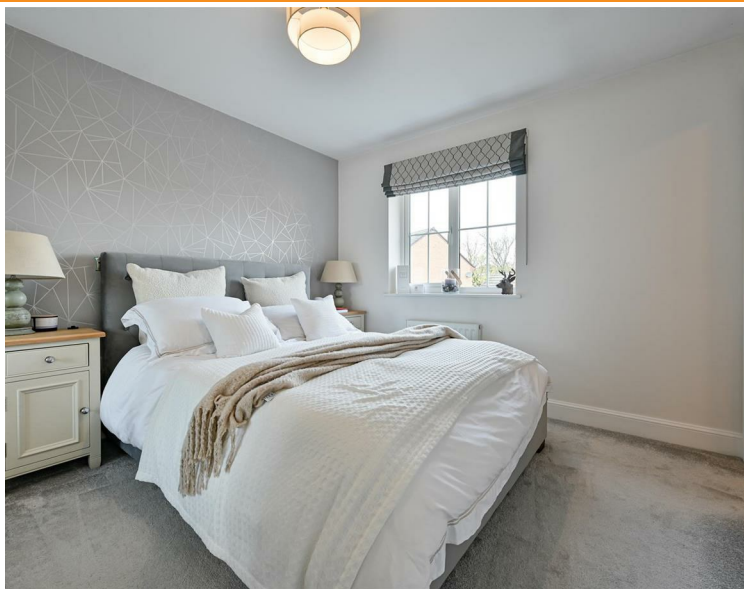
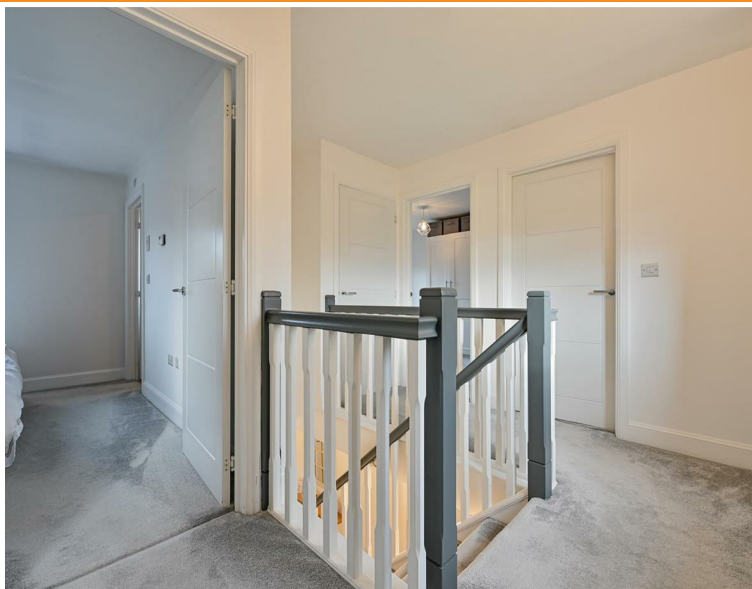












Road Map



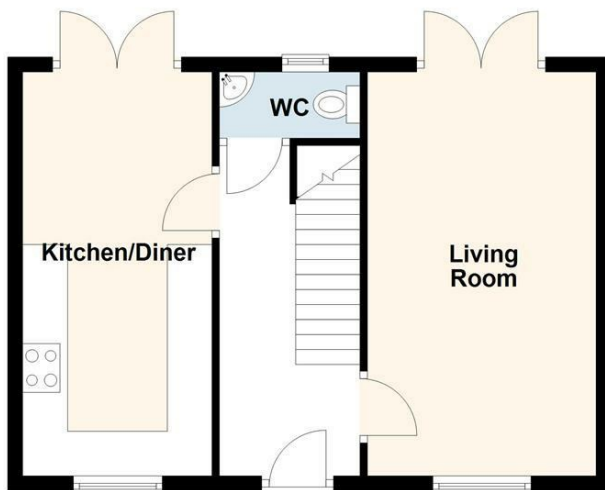
Hybrid Map



Terrain Map



Ground Floor



First Floor



Total area: approx. 90.6 sq. metres (975.7 sq. feet)

Every attempt is made to ensure accuracy, however all measurements are approximate. This plan is for illustrative purposes only and is not to scale.
Plan produced using PlanUp.

Viewing

Please contact our Longridge Office on 01772 233380 if you wish to arrange a viewing appointment for this property or require further information.

Misdescriptions Act

These particulars, whilst believed to be accurate are set out as a general outline only for guidance and do not constitute any part of an offer or contract. Intending purchasers should not rely on them as statements of representation of fact, but must satisfy themselves by inspection or otherwise as to their accuracy. No person in this firm's employment has the authority to make or give any representation or warranty in respect of the property.