



Plot 38 Inglewhite Meadows, Inglewhite Road

Longridge, Preston, PR3 2NA

£425,000



The Avondale is a tasteful, double-fronted, detached home, with elegant sash windows, provides plenty of flexible living spaces. The Avondale's generous open-plan kitchen has a dedicated dining area with an attractive bay window, and a separate utility room. A large, triple-aspect lounge leads to the garden via French doors and a separate study provides quiet space to work. Upstairs are four double bedrooms, the master with en-suite, and a family bathroom with bath and shower. CALL our LONGRIDGE branch on 01772 233380 for further details.



Plot 38 Inglewhite Meadows, Inglewhite Road

Longridge, Preston, PR3 2NA

£425,000



GROUND FLOOR

Hall

Lounge

18'0" x 11'10" (5.490m x 3.615m)

Open plan kitchen/dining room

21'7" x 14'5" (6.600m x 4.418m)

Utility

6'9" x 5'6" (2.062m x 1.688m)

Study

9'5" x 8'2" (2.885m x 2.490m)

WC

5'9" x 3'2" (1.768m x 0.983m)

FIRST FLOOR

Bedroom 1

18'3" x 11'10" (5.587m x 3.615m)

En suite

7'3" x 4'8" (2.222m x 1.435m)

Bedroom 2

17'1" x 9'2" (5.227m x 2.800m)

Bedroom 3

11'8" x 10'10" (3.566m x 3.316m)

Bedroom 4

12'9" x 8'4" (3.893m x 2.550m)

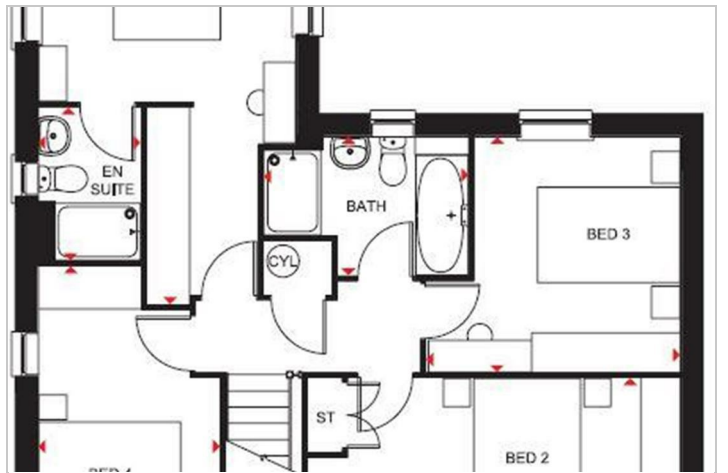
Bathroom

9'5" x 6'3" (2.871m x 1.929m)

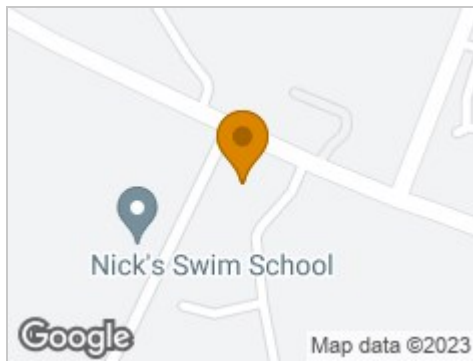
Outside

Property Misdescriptions Act

Although these particulars are thought to be materially correct, they are for guidance only and do not constitute any part of an offer or contract. A wide angle camera has been used in these photos and intending purchasers should not rely on them as statements or representation of fact, but must satisfy themselves by inspection or otherwise as to their accuracy.



Road Map



Hybrid Map



Terrain Map



Floor Plan



Viewing

Please contact our Longridge Office on 01772 233380 if you wish to arrange a viewing appointment for this property or require further information.

Energy Efficiency Graph

