

welcome to
Whittle Brook Park
Heywood



when it comes to new homes,
we think of everything.

There's so much to consider when you're looking for a new home. From the size to the location, the build quality to the price, making the right choice **really matters**.

At Anwyl Homes, we know what it's like. We should do. After all, we've been building high quality new homes for decades, guiding our customers through the process and helping to unlock happy times ahead.

Whether you're looking for a cosy first property, a spacious family base, or you want to downsize now the kids have moved on, there's an Anwyl home that's right for you.

By combining traditional styling and quality workmanship with the best of today's modern features – not to mention personal touches and friendly smiles every step of the way – your Anwyl experience begins the moment you get in touch. Because with every new home we build, you can be sure we're thinking of you.

Anwyl homes. Everything considered.

*the opportunity to
make your home
YOUR OWN*



got
questions?

call...

01244

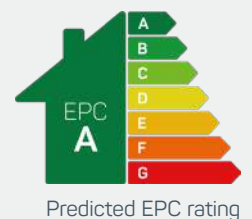
445 178

ANWYL
thoughtful homes



the edgworth
3 bed semi-detached

www.anwylhomes.co.uk





modern
open plan living

ground floor

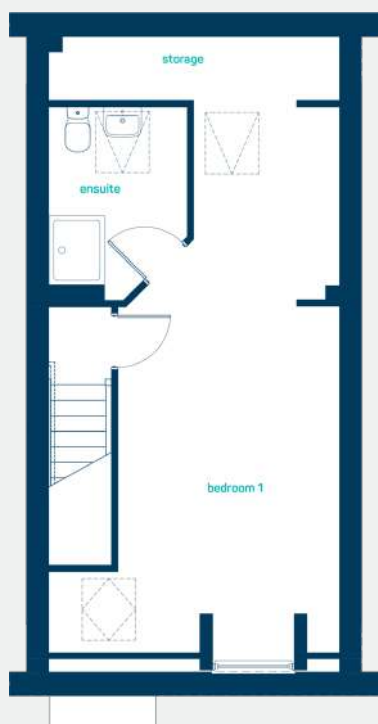
kitchen/dining 13'11" x 13'9"
living room 16'4" x 10'2"
cloaks 6'0" x 3'5"

kitchen/dining 4.25m x 4.18m
living room 4.97m x 3.11m
cloaks 1.82m x 1.05m

first floor

bedroom 2 13'11" x 11'8"
bedroom 3 11'0" x 7'3"
bathroom 7'3" x 7'1"

bedroom 2 4.25m x 3.56m
bedroom 3 3.35m x 2.21m
bathroom 2.21m x 2.15m



second floor

bedroom 1 16'8" x 13'11"
en-suite 9'4" x 6'8"

bedroom 1 5.08m x 4.25m
en-suite 2.84m x 2.02m

the edgworth
3 bed semi-detached

ANWYL
thoughtful homes

NEW HOMES QUALITY CODE

NEW HOMES SERVICE OMBUDSMAN

www.anwylhomes.co.uk

Anwyl Homes is a Registered Developer with the NHQB. This is a computer-generated image of the edgworth, elevation treatment may vary. Room sizes are approximate, dimensions are taken from the longest room point (please consult homes advisor for measurement points). Plots may be handed and any garages may be single or double. Kitchen and bathroom layouts are indicative. These plans are correct at the time of going to press, but may be subject to change during construction. Please ensure that you check for specific plot details. 05/06/23.

everything considered.

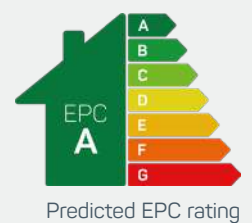
ANWYL
thoughtful homes



the higham

4 bed detached with garage

www.anwylhomes.co.uk

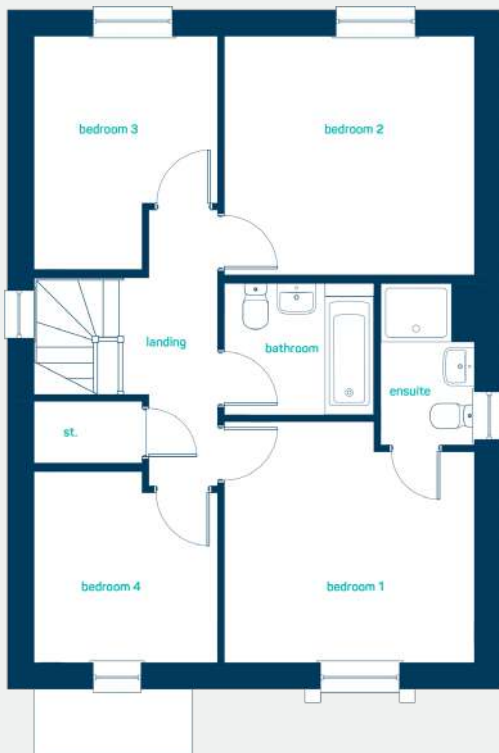




modern
open plan living

ground floor

kitchen/dining	20'9" x 13'0"
living room	16'2" x 12'10"
cloaks	5'8" x 3'2"
kitchen/dining	6.32m x 3.96m
living room	4.92m x 3.90m
cloaks	1.73m x 0.96m



first floor

bedroom 1	11'9" x 11'5"
en-suite	7'8" x 4'5"
bedroom 2	11'9" x 11'3"
bedroom 3	11'0" x 8'8"
bedroom 4	9'0" x 8'8"
bathroom	7'1" x 6'3"
bedroom 1	3.59m x 3.47m
en-suite	2.33m x 1.35m
bedroom 2	3.59m x 3.44m
bedroom 3	3.36m x 2.64m
bedroom 4	2.75m x 2.64m
bathroom	2.15m x 1.90m

the higham
4 bed detached with garage

ANWYL
thoughtful homes

NEW HOMES QUALITY CODE

NEW HOMES OMBUDSMAN SERVICE

www.anwylhomes.co.uk

Anwyl Homes is a Registered Developer with the NHQB. This is a computer-generated image of the higham, elevation treatment may vary. Room sizes are approximate, dimensions are taken from the longest room point (please consult homes advisor for measurement points). Plots may be handed and any garages may be single or double. Kitchen and bathroom layouts are indicative. These plans are correct at the time of going to press, but may be subject to change during construction. Please ensure that you check for specific plot details. Kitchen islands are an optional upgrade to this house type. 05/06/23.

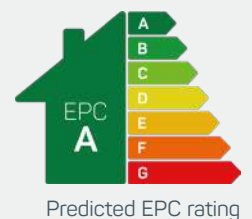
everything considered.

ANWYL
thoughtful homes



the newburgh
4 bed detached with garage

www.anwylhomes.co.uk





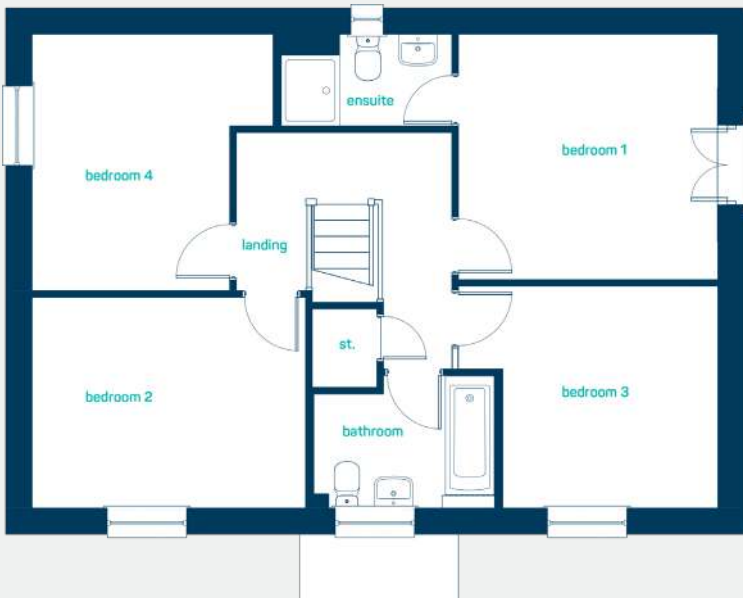
modern
open plan living



ground floor

kitchen/dining	22'3" x 12'8"
utility	7'0" x 6'5"
living room	22'3" x 12'2"
cloaks	5'8" x 3'4"

kitchen/dining	6.77m x 3.86m
utility	2.12m x 1.95m
living room	6.77m x 3.70m
cloaks	1.72m x 1.03m



first floor

bedroom 1	12'2" x 11'6"
en-suite	8'0" x 4'4"
bedroom 2	12'10" x 9'11"
bedroom 3	12'2" x 10'5"
bedroom 4	12'0" x 11'4"
bathroom	8'6" x 6'3"

bedroom 1	3.71m x 3.51m
en-suite	2.44m x 1.31m
bedroom 2	3.91m x 3.01m
bedroom 3	3.71m x 3.17m
bedroom 4	3.67m x 3.45m
bathroom	2.59m x 1.89m

the newburgh
4 bed detached with garage

ANWYL
thoughtful homes

**NEW HOMES
QUALITY
CODE**

**NEW HOMES
OMBUDSMAN
SERVICE**

www.anwylhomes.co.uk

Anwyl Homes is a Registered Developer with the NHQB. This is a computer-generated image of the newburgh, elevation treatment may vary. Room sizes are approximate, dimensions are taken from the longest room point (please consult homes advisor for measurement points). Plots may be handed and any garages may be single or double. Kitchen and bathroom layouts are indicative. These plans are correct at the time of going to press, but may be subject to change during construction. Please ensure that you check for specific plot details. 05/06/23.

everything considered.

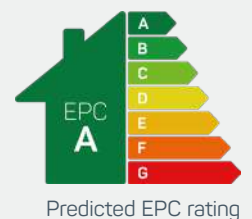
ANWYL
thoughtful homes



the tatham

4 bed detached with garage

www.anwylhomes.co.uk



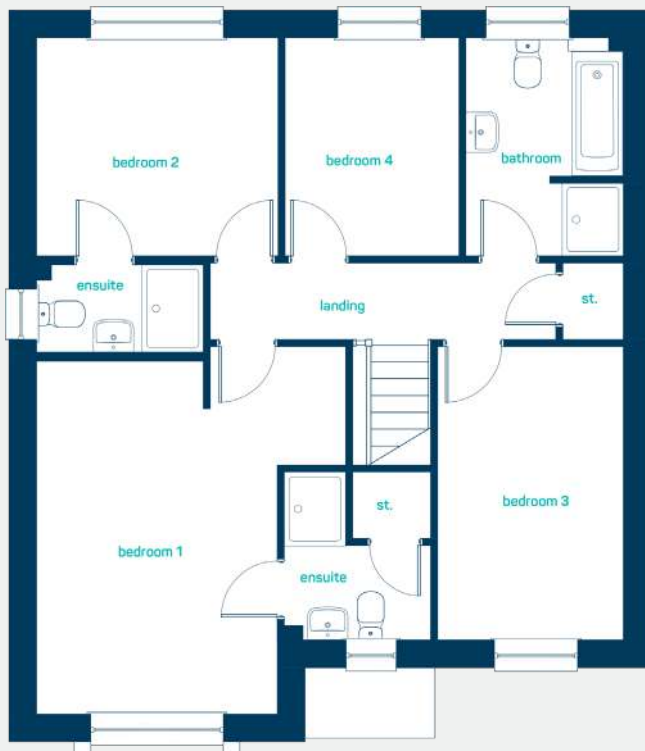


modern
open plan living

ground floor

kitchen/dining/ family	26'4" x 10'9"
utility	7'9" x 5'10"
living room	19'2" x 10'9"
study	9'8" x 8'4"
cloaks	5'10" x 3'1"

kitchen/dining/ family	8.01m x 3.27m
utility	2.35m x 1.77m
living room	5.83m x 3.29m
study	2.95m x 2.54m
cloaks	1.77m x 0.93m



first floor

bedroom 1	16'6" x 13'10"
en-suite 1	7'6" x 6'7"
bedroom 2	10'10" x 9'10"
en-suite 2	7'6" x 3'11"
bedroom 3	13'2" x 8'4"
bedroom 4	9'10" x 7'9"
bathroom	9'10" x 7'1"

bedroom 1	5.03m x 4.22m
en-suite 1	2.30m x 2.00m
bedroom 2	3.30m x 2.98m
en-suite 2	2.27m x 1.20m
bedroom 3	4.02m x 2.54m
bedroom 4	2.98m x 2.37m
bathroom	2.98m x 2.15m

the tatham
4 bed detached with garage

ANWYL
thoughtful homes

**NEW
HOMES
QUALITY
CODE**

**NEW HOMES
OMBUDSMAN
SERVICE**

www.anwylhomes.co.uk

Anwyl Homes is a Registered Developer with the NHQB. This is a computer-generated image of the tatham, elevation treatment may vary. Room sizes are approximate, dimensions are taken from the longest room point (please consult homes advisor for measurement points). Plots may be handed and any garages may be single or double. Kitchen and bathroom layouts are indicative. These plans are correct at the time of going to press, but may be subject to change during construction. Please ensure that you check for specific plot details. 05/06/23.

everything considered.

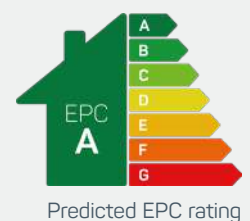
ANWYL
thoughtful homes



the tatham

4 bed detached with garage

www.anwylhomes.co.uk





modern
open plan living

ground floor

kitchen/dining/ family	26'4" x 10'9"
utility	7'9" x 5'10"
living room	19'2" x 10'9"
study	9'8" x 8'4"
cloaks	5'10" x 3'1"

kitchen/dining/ family	8.01m x 3.27m
utility	2.35m x 1.77m
living room	5.83m x 3.29m
study	2.95m x 2.54m
cloaks	1.77m x 0.93m



first floor

bedroom 1	16'6" x 13'10"
en-suite 1	7'6" x 6'7"
bedroom 2	10'10" x 9'10"
en-suite 2	7'6" x 3'11"
bedroom 3	13'2" x 8'4"
bedroom 4	9'10" x 7'9"
bathroom	9'10" x 7'1"

bedroom 1	5.03m x 4.22m
en-suite 1	2.30m x 2.00m
bedroom 2	3.30m x 2.98m
en-suite 2	2.27m x 1.20m
bedroom 3	4.02m x 2.54m
bedroom 4	2.98m x 2.37m
bathroom	2.98m x 2.15m

the tatham
4 bed detached with garage

ANWYL
thoughtful homes

**NEW
HOMES
QUALITY
CODE**

**NEW HOMES
OMBUDSMAN
SERVICE**

www.anwylhomes.co.uk

Anwyl Homes is a Registered Developer with the NHQB. This is a computer-generated image of the tatham, elevation treatment may vary. Room sizes are approximate, dimensions are taken from the longest room point (please consult homes advisor for measurement points). Plots may be handed and any garages may be single or double. Kitchen and bathroom layouts are indicative. These plans are correct at the time of going to press, but may be subject to change during construction. Please ensure that you check for specific plot details. 05/06/23.

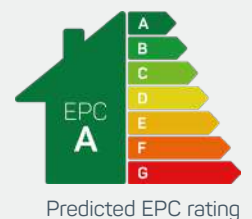
everything considered.

ANWYL
thoughtful homes



the rufford
4 bed detached

www.anwyllhomes.co.uk





modern
open plan living



ground floor

kitchen/family/ dining	19'3" x 16'2"
living room	15'7" x 11'8"
cloaks	6'3" x 3'
kitchen	5.87m x 4.92m
living room	4.74m x 3.56m
cloaks	1.91m x 0.91m

first floor

bedroom 2	11'9" x 10'1"
en-suite 2	8'7" x 3'11"
bedroom 3	12'1" x 11'9"
bedroom 4	10' x 8'2"
bathroom	7'2" x 6'3"
bedroom 2	3.58m x 3.06m
en-suite 2	2.61m x 1.20m
bedroom 3	3.67m x 3.59m
bedroom 4	3.05m x 2.50m
bathroom	2.19m x 1.91m



second floor

bedroom 1	23'4" x 19'3"
en-suite	8'5" x 6'11"
bedroom 1	7.10m x 5.87m
en-suite	2.57m x 2.11m

the rufford
4 bed detached

ANWYL
thoughtful homes

**NEW
HOMES
QUALITY
CODE**

**NEW HOMES
OMBUDSMAN
SERVICE**

www.anwylhomes.co.uk

Anwyl Homes is a Registered Developer with the NHQB. This is a computer-generated image of the rufford, elevation treatment may vary. Room sizes are approximate, dimensions are taken from the longest room point (please consult homes advisor for measurement points). Plots may be handed and any garages may be single or double. Kitchen and bathroom layouts are indicative. These plans are correct at the time of going to press, but may be subject to change during construction. Please ensure that you check for specific plot details. 05/06/23.

everything considered.

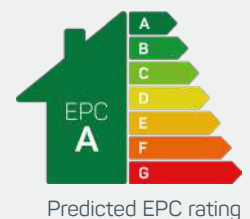
ANWYL
thoughtful homes



the kirkham

4 bed semi-detached

www.anwylhomes.co.uk





modern
open plan living

ground floor

kitchen 14'3" x 7'3"
living room 17'7" x 15'8"
cloaks 5'6" x 3'2"

kitchen 4.35m x 2.21m
living room 5.34m x 4.78m
cloaks 1.67m x 0.96m

first floor

bedroom 2 15'8" x 9'10"
bedroom 3 15'8" x 9'4"
bathroom 8'8" x 8'

bedroom 2 4.78m x 2.99m
bedroom 3 4.78m x 2.84m
bathroom 2.63m x 2.45m

second floor

bedroom 1 15'8" x 14'1"
en-suite 8'3" x 3'11"
bedroom 4 15'8" x 7'6"

bedroom 1 4.78m x 4.28m
en-suite 2.53m x 1.20m
bedroom 4 4.78m x 2.29m

the kirkham
4 bed semi-detached

ANWYL
thoughtful homes

**NEW
HOMES
QUALITY
CODE**

**NEW HOMES
OMBUDSMAN
SERVICE**

www.anwylhomes.co.uk

Anwyl Homes is a Registered Developer with the NHQB. This is a computer-generated image of the kirkham, elevation treatment may vary. Room sizes are approximate, dimensions are taken from the longest room point (please consult homes advisor for measurement points). Plots may be handed and any garages may be single or double. Kitchen and bathroom layouts are indicative. These plans are correct at the time of going to press, but may be subject to change during construction. Please ensure that you check for specific plot details. 05/06/23.

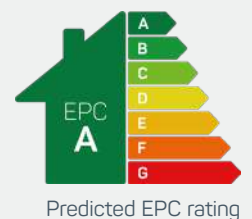
everything considered.

ANWYL
thoughtful homes



the altham
3 bed house

www.anwylhomes.co.uk



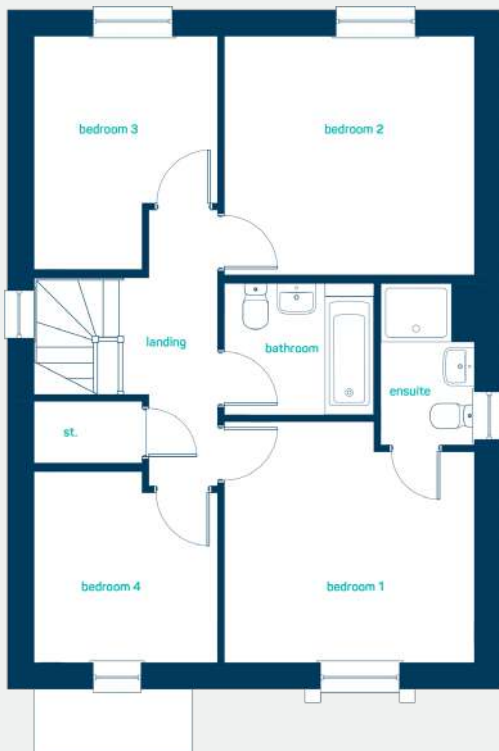


modern
open plan living

ground floor

kitchen/dining	15'4" x 9'8"
living room	20'2" x 12'1"
cloaks	5'3" x 2'11"

kitchen/dining	4.67m x 2.95m
living room	6.15m x 3.67m
cloaks	1.6m x 0.9m



first floor

bedroom 1	14'10" x 8'6"
en-suite	8'7" x 3'4"
bedroom 2	11'7" x 8'6"
bedroom 3	10'7" x 6'6"
bathroom	6'8" x 6'6"

bedroom 1	4.53m x 2.6m
en-suite	2.61m x 1.01m
bedroom 2	3.53m x 2.6m
bedroom 3	3.22m x 1.97m
bathroom	2.05m x 1.97m

the altham
3 bed house

ANWYL
thoughtful homes

**NEW
HOMES
QUALITY
CODE**

**NEW HOMES
OMBUDSMAN
SERVICE**

www.anwylhomes.co.uk

Anwyl Homes is a Registered Developer with the NHQB. This is a computer-generated image of the altham, elevation treatment may vary. Room sizes are approximate, dimensions are taken from the longest room point (please consult homes advisor for measurement points). Plots may be handed and any garages may be single or double. Kitchen and bathroom layouts are indicative. These plans are correct at the time of going to press, but may be subject to change during construction. Please ensure that you check for specific plot details. Kitchen islands are an optional upgrade to this house type. 05/06/23.

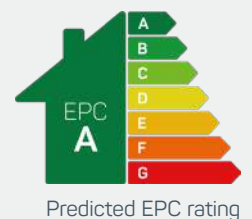
everything considered.

ANWYL
thoughtful homes



the lathom
4 bed house

www.anwylhomes.co.uk



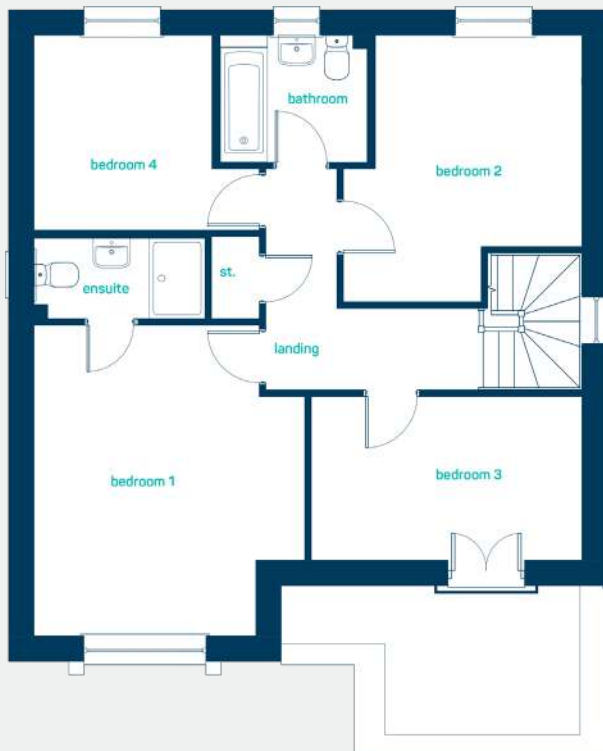


modern
open plan living

ground floor

kitchen/dining	20'4" x 12'7"
living room	16'2" x 12'1"
utility	6'4" x 6'0"
cloaks	6'0" x 3'5"

kitchen/dining	6.2m x 3.85m
living room	4.91m x 3.67m
utility	1.94m x 1.82m
cloaks	1.82m x 1.05m



first floor

bedroom 1	15'2" x 13'2"
en-suite	8'4" x 3'11"
bedroom 2	12'9" x 10'1"
bedroom 3	13'2" x 7'9"
bedroom 4	11'0" x 9'6"
bathroom	7'2" x 6'2"

bedroom 1	4.61m x 4.01m
en-suite	2.54m x 1.2m
bedroom 2	3.96m x 3.06m
bedroom 3	4.01m x 2.43m
bedroom 4	3.34m x 2.89m
bathroom	2.18m x 1.89m

the lathom
4 bed house

ANWYL
thoughtful homes

**NEW
HOMES
QUALITY
CODE**

**NEW HOMES
OMBUSMAN
SERVICE**

www.anwylhomes.co.uk

Anwyl Homes is a Registered Developer with the NHQB. This is a computer-generated image of the lathom, elevation treatment may vary. Room sizes are approximate, dimensions are taken from the longest room point (please consult homes advisor for measurement points). Plots may be handed and any garages may be single or double. Kitchen and bathroom layouts are indicative. These plans are correct at the time of going to press, but may be subject to change during construction. Please ensure that you check for specific plot details. Kitchen islands are an optional upgrade to this house type. 05/06/23.

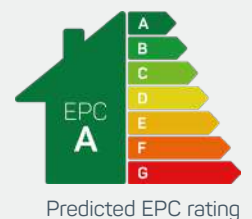
everything considered.

ANWYL
thoughtful homes



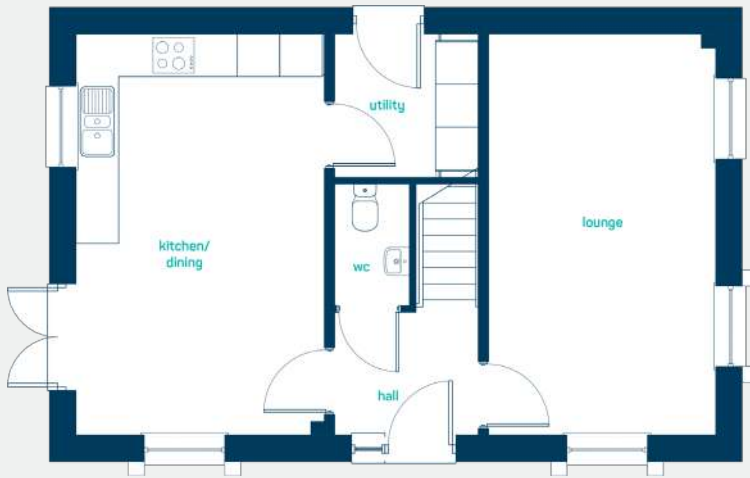
the dalton
3 bed house

www.anwylhomes.co.uk





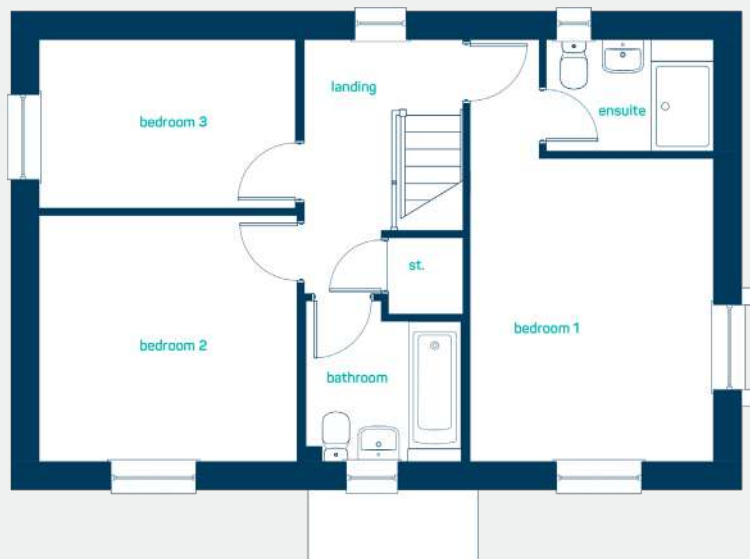
modern
open plan living



ground floor

kitchen/dining	18'6" x 11'6"
living room	18'6" x 10'6"
utility	6'8" x 6'8"
cloaks	5'7" x 3'5"

kitchen/dining	5.65m x 3.5m
living room	5.65m x 3.2m
utility	2.02m x 2.02m
cloaks	1.71m x 1.05m



first floor

bedroom 1	18'6" x 10'8"
en-suite	7'4" x 4'11"
bedroom 2	10'10" x 11'4"
bedroom 3	7'5" x 11'3"
bathroom	7'1" x 6'10"

bedroom 1	5.65m x 3.26m
en-suite	2.24m x 1.49m
bedroom 2	3.3m x 3.45m
bedroom 3	2.26m x 3.43m
bathroom	2.15m x 2.08m

the dalton
3 bed house

ANWYL
thoughtful homes

**NEW
HOMES
QUALITY
CODE**

**NEW HOMES
OMBUDSMAN
SERVICE**

www.anwylhomes.co.uk

Anwyl Homes is a Registered Developer with the NHQB. This is a computer-generated image of the dalton, elevation treatment may vary. Room sizes are approximate, dimensions are taken from the longest room point (please consult homes advisor for measurement points). Plots may be handed and any garages may be single or double. Kitchen and bathroom layouts are indicative. These plans are correct at the time of going to press, but may be subject to change during construction. Please ensure that you check for specific plot details. Kitchen islands are an optional upgrade to this house type. 05/06/23.

everything considered.

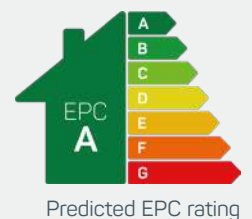
ANWYL
thoughtful homes



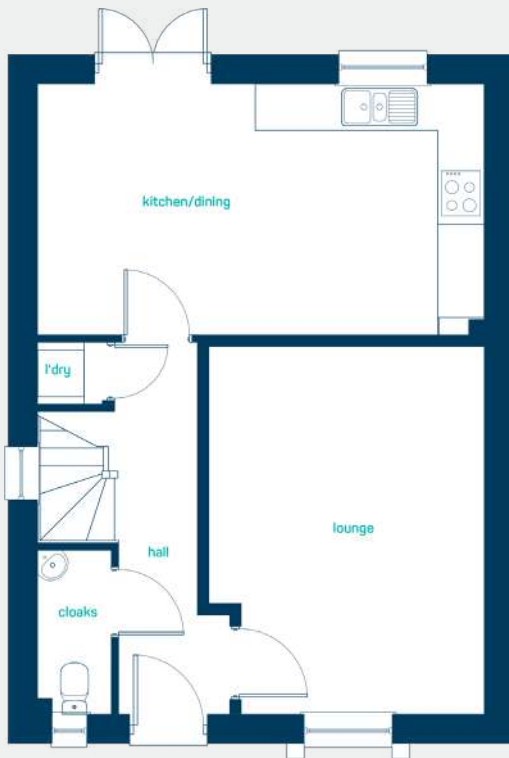
the barrowford

3 bed house

www.anwylhomes.co.uk



Predicted EPC rating



modern
open plan living

ground floor

kitchen/dining 18'11" x 10'7"
living room 15'7" x 11'8"
cloaks 6'11" x 3'1"

kitchen/dining 5.76m x 3.55m
living room 4.74m x 3.2m
cloaks 2.11m x 0.95m



first floor

bedroom 1 11'6" x 11'4"
en-suite 8'3" x 3'11"
bedroom 2 10'7" x 9'7"
bedroom 3 10'4" x 9'1"
bathroom 7'3" x 6'11"

bedroom 1 3.52m x 3.45m
en-suite 2.51m x 1.2m
bedroom 2 3.22m x 2.91m
bedroom 3 3.15m x 2.76m
bathroom 2.21m x 2.11m

the barrowford

3 bed house

www.anwylhomes.co.uk

ANWYL
thoughtful homes

**NEW
HOMES
QUALITY
CODE**

**NEW HOMES
OMBUDSMAN
SERVICE**

Anwyl Homes is a Registered Developer with the NHQB. This is a computer-generated image of the barrowford, elevation treatment may vary. Room sizes are approximate, dimensions are taken from the longest room point (please consult homes advisor for measurement points). Plots may be handed and any garages may be single or double. Kitchen and bathroom layouts are indicative. These plans are correct at the time of going to press, but may be subject to change during construction. Please ensure that you check for specific plot details. Kitchen islands are an optional upgrade to this house type. 05/06/23.

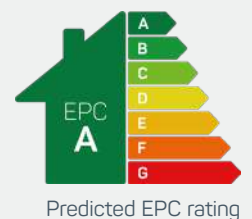
everything considered.

ANWYL
thoughtful homes



the crawford
3 bed house

www.anwylhomes.co.uk



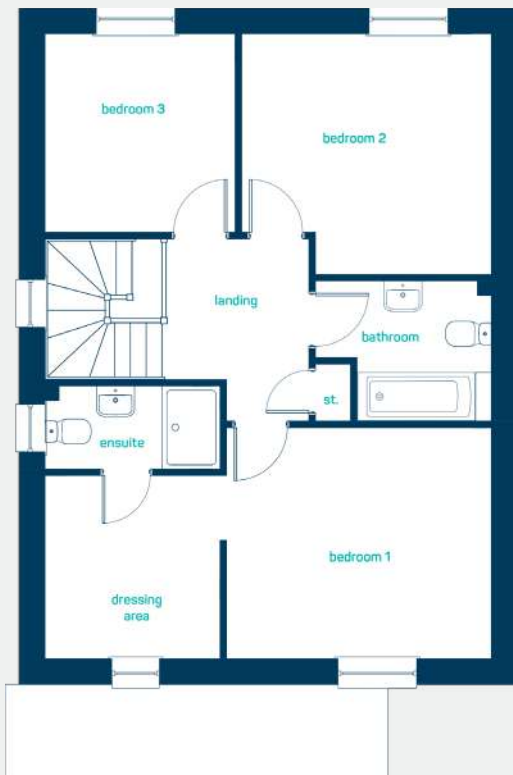


modern
open plan living

ground floor

kitchen/dining 21'1" x 9'5"
living room 16'1" x 10'8"
cloaks 6'5" x 3'6"

kitchen/dining 6.44m x 2.87m
living room 4.91m x 3.26m
cloaks 1.96m x 1.05m



first floor

bedroom 1 12'6" x 10'11"
dressing area 8'8" x 8'3"
en-suite 8'3" x 3'11"
bedroom 2 11'10" x 11'5"
bedroom 3 9'5" x 9'0"
bathroom 8'4" x 6'8"

bedroom 1 3.82m x 3.34m
dressing area 2.64m x 2.52m
en-suite 2.52m x 1.2m
bedroom 2 3.6m x 3.47m
bedroom 3 2.87m x 2.74m
bathroom 2.53m x 2.02m



the crawford
3 bed house

ANWYL
thoughtful homes

NEW HOMES QUALITY CODE

NEW HOMES OMBUDSMAN SERVICE

www.anwylhomes.co.uk

Anwyl Homes is a Registered Developer with the NHQB. This is a computer-generated image of the crawford, elevation treatment may vary. Room sizes are approximate, dimensions are taken from the longest room point (please consult homes advisor for measurement points). Plots may be handed and any garages may be single or double. Kitchen and bathroom layouts are indicative. These plans are correct at the time of going to press, but may be subject to change during construction. Please ensure that you check for specific plot details. Kitchen islands are an optional upgrade to this house type. 05/06/23.

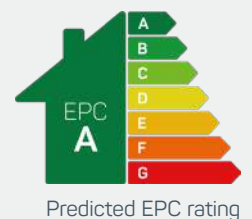
everything considered.

ANWYL
thoughtful homes



the hollingworth
4 bed house

www.anwylhomes.co.uk





modern
open plan living

ground floor

kitchen/dining 28'11" x 11'3"
living room 16'9" x 10'5"
utility 6'2" x 5'7"
cloaks 6'9" x 3'8"

kitchen/dining 8.8m x 3.43m
living room 5.11m x 3.17m
utility 1.89m x 1.69m
cloaks 2.6m x 1.11m



first floor

bedroom 1 15'2" x 10'5"
en-suite 7'4" x 7'2"
bedroom 2 14'11" x 10'9"
bedroom 3 13'0" x 10'5"
bedroom 4 11'5" x 10'4"
bathroom 9'8" x 7'5"

bedroom 1 4.62m x 3.17m
en-suite 2.24m x 2.18m
bedroom 2 4.55m x 3.27m
bedroom 3 3.97m x 3.17m
bedroom 4 3.48m x 3.16m
bathroom 2.93m x 2.25m



the hollingworth
4 bed house

ANWYL
thoughtful homes

NEW HOMES QUALITY CODE

NEW HOMES OMBUDSMAN SERVICE

www.anwylhomes.co.uk

Anwyl Homes is a Registered Developer with the NHQB. This is a computer-generated image of the hollingworth, elevation treatment may vary. Room sizes are approximate, dimensions are taken from the longest room point (please consult homes advisor for measurement points). Plots may be handed and any garages may be single or double. Kitchen and bathroom layouts are indicative. These plans are correct at the time of going to press, but may be subject to change during construction. Please ensure that you check for specific plot details. Kitchen islands are an optional upgrade to this house type. 05/06/23.

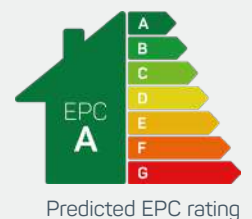
everything considered.

ANWYL
thoughtful homes



the whitworth
5 bed house

www.anwylhomes.co.uk





modern
open plan living

ground floor

kitchen/dining/family 28'2" x 10'10"
 living room 16'5" x 10'5"
 utility 6'0" x 5'8"
 cloaks 6'9" x 4'0"

kitchen/dining/family 8.57m x 3.3m
 living room 5.01m x 3.17m
 utility 1.82m x 1.72m
 cloaks 2.06m x 1.22m



first floor

bedroom 2 14'1" x 10'5"
 en-suite 7'6" x 5'1"
 bedroom 3 14'1" x 10'6"
 bedroom 4 13'4" x 10'5"
 bedroom 5 10'9" x 10'0"
 bathroom 8'8" x 6'10"

bedroom 2 4.29m x 3.17m
 en-suite 2.27m x 1.55m
 bedroom 3 4.29m x 3.19m
 bedroom 4 4.07m x 3.17m
 bedroom 5 3.29m x 3.05m
 bathroom 2.63m x 2.08m

second floor

bedroom 1 22'9" x 17'4"
 en-suite 10'7" x 10'6"

bedroom 1 6.93m x 5.29m
 en-suite 3.22m x 3.19m

the whitworth
5 bed house

www.anwyllhomes.co.uk

ANWYL
thoughtful homes

NEW
HOMES
QUALITY
CODE

NEW HOMES
OMBUDSMAN
SERVICE

Anwyll Homes is a Registered Developer with the NHQB. This is a computer-generated image of the whitworth, elevation treatment may vary. Room sizes are approximate, dimensions are taken from the longest room point (please consult homes advisor for measurement points). Plots may be handed and any garages may be single or double. Kitchen and bathroom layouts are indicative. These plans are correct at the time of going to press, but may be subject to change during construction. Please ensure that you check for specific plot details. 05/06/23.

everything considered.

got questions?

call 01706 438 437



email: whittlebrookpark@anwyl.co.uk
Manchester Road, Heywood, OL10 2QD

www.anwylhomes.co.uk

everything considered.