

ANWYL
thoughtful homes

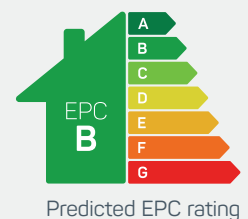


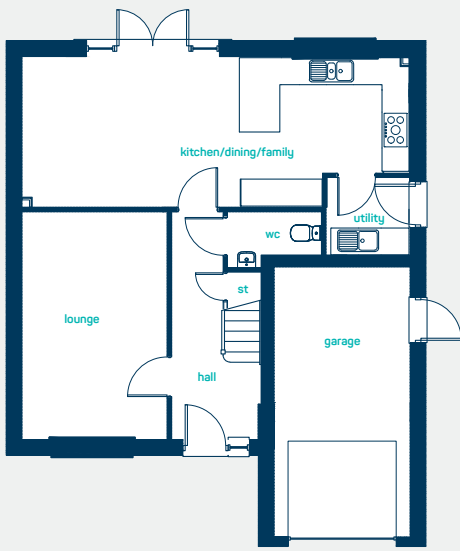
the whitworth

5 bed detached with garage

A *spacious* 5 bedroom home delivering quality without compromise over 3 floors. Ideal for families. Key features include an impressive master suite spanning the entire top floor, a Jack and Jill ensuite to bed 2 and 4 as well as a separate family bathroom.

www.anwylhomes.co.uk



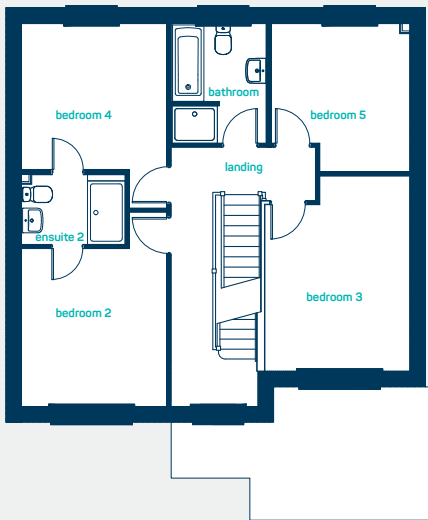


modern
open plan living

ground floor

kitchen/dining /family	28'2" x 10'10"
living room	10'5" x 16'5"
utility	6'0" x 5'8"
cloaks	6'9" x 4'0"

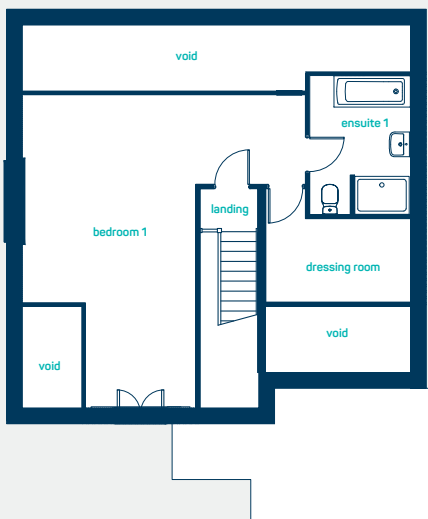
kitchen/dining /family	8.57m x 3.30m
living room	3.17m x 5.01m
utility	1.82m x 1.72m
cloaks	2.06m x 1.22m



first floor

bedroom 2	10'5" x 14'1"
en-suite	7'6" x 5'1"
bedroom 3	10'6" x 14'1"
bedroom 4	10'5" x 13'4"
bedroom 5	10'0" x 10'9"
bathroom	6'10" x 8'8"

bedroom 2	3.17m x 4.29m
en-suite	2.27m x 1.55m
bedroom 3	3.19m x 4.29m
bedroom 4	3.17m x 4.07m
bedroom 5	3.05m x 3.29m
bathroom	2.08m x 2.63m



second floor

bedroom 1	17'4" x 22'9"
en-suite	10'6" x 10'7"

bedroom 1	5.29m x 6.93m
en-suite	3.19m x 3.22m

the whitworth
5 bed detached with garage

ANWYL
thoughtful homes

NEW HOMES QUALITY CODE

NEW HOMES OMBUDSMAN SERVICE

www.anwylhomes.co.uk

Anwyl Homes is a Registered Developer with the NHQB. This is a computer-generated image of the whitworth, elevation treatment may vary. Room sizes are approximate, dimensions are taken from the longest room point (please consult homes advisor for measurement points). Plots may be handed and any garages may be single or double. Kitchen and bathroom layouts are indicative. These plans are correct at the time of going to press, but may be subject to change during construction. Please ensure that you check for specific plot details. 22/08/24.

everything considered.