



Watermans

Benview House, Benview Cottage & The Glasshouse

Whiting Bay, Isle of Arran, KA27 8QT



Welcome

from the Watermans Team, to the property at:

Benview House Benview Cottage & The Glasshouse

Whiting Bay, Isle of Arran, KA27 8QT

Welcome to a truly spectacular and one-of-a-kind detached family home, which offers an exceptional amount of space and unrivalled versatility. Consisting of three connected properties, Benview House, Benview Cottage and The Glasshouse, this stunning home features multiple reception areas, two stylish kitchens, and multiple high-end bathrooms, as well as a total of six double bedrooms. The three interconnected properties fall under one title.

We hope you love this property as much as we do.



General Features

- Spectacular detached house with 3 properties in 1
- Stunning elevated location with commanding sea views
- Extensively upgraded and renovated throughout
- Stylish interiors with designer decorations
- Retained Strathclyde Arts and Crafts style period features
- Impressive wraparound gardens with panoramic views
- Driveway for multiple vehicles (with an EV car charger)

Benview House Features

- Vestibule and porch with original stained-glass windows
- Bright reception hall with an ornate staircase
- Drawing room with wood burner and original features
- Dual-aspect family room/study with a log-burning stove
- Spacious and stylish farmhouse-inspired kitchen/diner with walk-in pantry and garden access
- Landing with a built-in cupboard and attic access
- Three large bedrooms with impressive elevated views
- Three contemporary 3pc en-suite shower rooms
- Stylish 3pc family bathroom with designer finishings
- Oil central heating system and a mix of glazing styles

Benview Cottage Features

- Private entrance and internal access from Benview House
- Charming living room with a log-burning stove
- Fitted dining kitchen with a Shaker-inspired design
- Separate utility room for discreet laundry
- Quality shower room with a three-piece suite
- Two bright bedrooms (one with wardrobe storage)
- Electric heating system and double glazed-windows

The Glasshouse Features

- Private entrance and internal access from Benview Cottage
- Double-height living room with a wood burner
- Four-piece bathroom with a rainfall shower enclosure
- Mezzanine bedroom with dual-aspect windows
- Private parking space and private garden
- Electric heating system and double glazed-windows



[Click here](#)
for a virtual tour of
**Benview House,
Benview Cottage
& The Glass House**

The original farm buildings were erected in the mid 1860s as a pair of traditional rural cottages (plus lean-to byre). In the 1930s a retired sea Captain (Captain Black) undertook a significant extension/expansion of the larger cottage with two aims: to create an imposing villa (now Benview House) with commanding views of the sea to the east and to allow for a large drawing room on a scale that could accommodate his passion for social gatherings and ceilidh dancing. The current owners purchased these buildings around 10 years ago and have since spent a substantial sum to extensively upgrade and renovate the entire property and garden up to the present standard, winning a 5-star AA rating and Scottish B&B of the year along the way. Finished in Farrow and Ball colours, along with William Morris, Timorous Beasties and Ellie Cashman wallpapers, this incredible home is further enhanced by carefully retained Strathclyde Arts and Crafts style period features - this is a unique property that must be viewed to appreciate how impressive it is. Situated above the village of Whiting Bay with commanding sea views over the Firth of Clyde, Benview's location is every bit as impressive as the home itself. Peaceful and intimate, it is the perfect base for exploring Arran.

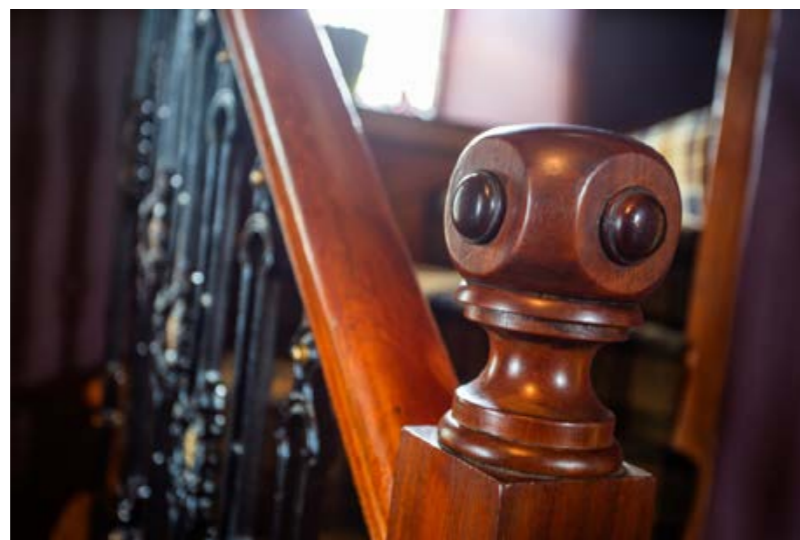
Currently, Benview House and The Glasshouse are trading as a B&B, which has been awarded the prestigious AA Scottish Guest Accommodation of the Year award. New homeowners could continue this aspect if they desired. For more information, visit the B&B's website at: www.cruickshanksarran.co.uk





Discover *a family home like no other*

With its magnificent footprint and picturesque backdrop, this exclusive property astounds from the outset. Storm doors lead inside to a charming vestibule and porch, which features original stained-glass windows from the 1930s and classic 'Golden Thistle' Timorous Beasties wallpaper, set above half-height pine cladding. A chic reception hall, with an ornate staircase, completes this wonderful introduction.





Reception rooms

Sophisticated, elegant and refined

Complete with original sprung oak flooring and mahogany display cabinets, the drawing room is the very embodiment of sophistication. It has suave styling, including a Timorous Beasties feature wall, and an expansive footprint to accommodate a varied choice of comfortable lounge furnishings and a large dining table. Furthermore, east-facing windows fill the room with natural light, offering far-reaching sea views towards the Ayrshire coast. A picture rail and an original fireplace (with a sizeable wood-burning stove) add the final touch of refinement, along with generous built-in bookcases for your own personal library.





Family room/study

Light and airy ambience

In the family room/study, a neutral backdrop is textured by wood panelling and William Morris wallpaper to great effect. Dual-aspect windows to the east and south ensure a light and airy ambience, whilst a wooden fireplace (inset with a log-burning stove) forms a characterful focal point for cosy evenings. Versatile and spacious, this room offers lots of scope for various uses.



The kitchen

Inspired, sociable and highly practical



With an inspired farmhouse aesthetic, the kitchen/diner captures the essence of the home, providing a sociable space with sumptuous styling. The hall's Karndean floor continues here, complementing the decoration, along with the chunky wood-toned worktops and Shaker-style cabinets. Exposed ceiling beams and rustic stonework enhance the look, in addition to the white metro splashback tiles and tongue-and-groove panelling. It includes a traditional clothes pulley, a Belfast sink, an integrated dishwasher, and an electric range cooker set below concealed extractors. A backdoor provides garden access, whilst a walk-in pantry offers an additional sink and space for further freestanding appliances.





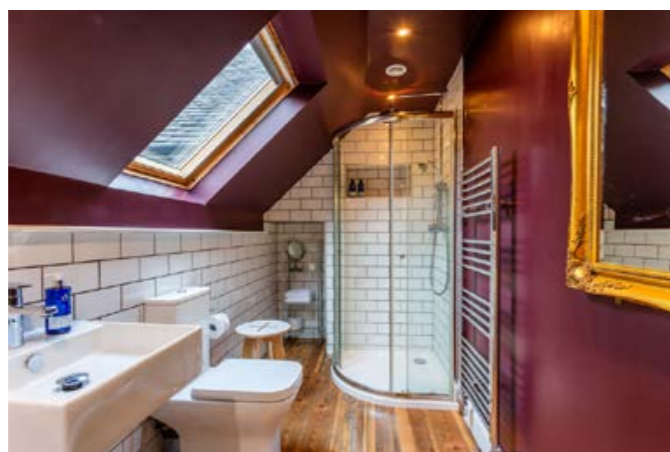

Benview House has three large and elegantly decorated bedrooms, all of which boast impressive elevated views, encompassing the Firth of Clyde to the east and the forested Torran Loisgte to the south. Each bedroom also has its own en-suite shower room/toilet. The second bedroom (called The Whimsical Room) is a light and airy dual-aspect room, whilst the third bedroom (The Honeysuckle Room) has traditional appeal, with its wooden floorboards, original fireplace, and early William Morris 'Honeysuckle' wallpaper. The first-floor landing connected to the bedrooms provides a built-in cupboard and access to a partly boarded attic for further storage.

Luxurious bedrooms *with private en-suites*





Adding to the high levels of luxury, the principal suite (known as the Pearl Suite) also combines two interconnected rooms to allow for a generous sleeping area (arranged around a period fireplace) and an adjacent sitting space.



The bathrooms



Each bedroom also has their own contemporary en-suite shower room (with an overhead rainfall shower). Located on the ground floor, the stylish family bathroom combines white tiles and tongue-and-groove panelling, with an original checkerboard floor and eye-catching designer wallpaper by Ellie Cashman. A traditional-inspired three-piece suite is the perfect companion to the look, providing a pedestal washbasin, a high-cistern toilet, and a freestanding slipper bath with a handheld shower.



Benview Cottage

Accessible via a private front door or internally via the kitchen of Benview House, this cottage is a fantastic addition to the main home, creating a lot of scope for creative uses and lots of additional space.

It features a welcoming porch and hall, with a comfortable living room (with a log burner) on the right and a charming Shaker-inspired dining kitchen to the left. There is also a utility room with an adjacent three-piece shower room.





A charming Shaker-inspired dining kitchen and a utility room





Two bright bedrooms are on the first floor, one of which comes with built-in wardrobe storage. Like the main home, this cottage is finished to exceptionally high standards.





The
Glasshouse

Similarly, the Glasshouse is an intimate self-contained one-bedroom space, which is ideal for independent family members.





It has a private entrance and can be accessed internally via Benview Cottage. It features a charming double-height living room with a wood-burning stove and an adjacent four-piece bathroom, which has a double-ended bathtub and a rainfall shower enclosure.

From the sitting area, stairs leading up to a delightful mezzanine bedroom, where dual-aspect light creates an airy ambience. The Glasshouse also has its own dedicated parking space and garden area too, with a sheltered and secluded seating spot.



Garden & Parking

Impressive wraparound gardens with wonderful views

Enveloping the entire property are beautiful wraparound gardens, which feature sprawling lawns and well-maintained patio areas for summer dining. Like the home, the gardens have been significantly developed as well. 'Perennial' type borders have been added alongside the manicured lawns to provide a wealth of colour. The gardens also offer ample space to add a home office or summerhouse, and they afford some of the best views on the island, with the sitting spaces offering panoramic views over the Firth of Clyde. Private parking for multiple vehicles is provided too, via a large driveway that also incorporates an electric car charger.

The main house has oil central heating and a mix of glazing styles, whilst Benview Cottage and The Glasshouse have electric heating and double-glazed windows.





Property Name

Benview House, Benview Cottage & The Glasshouse

Location

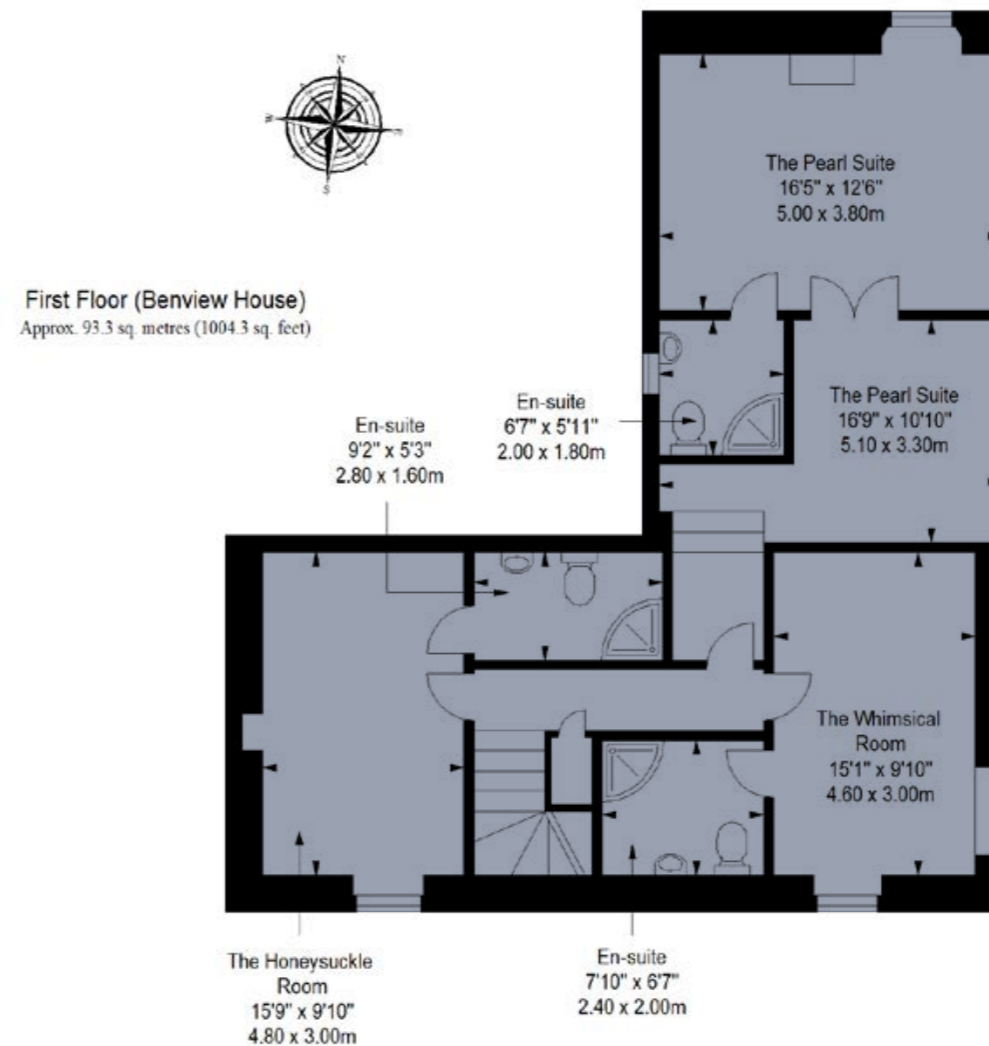
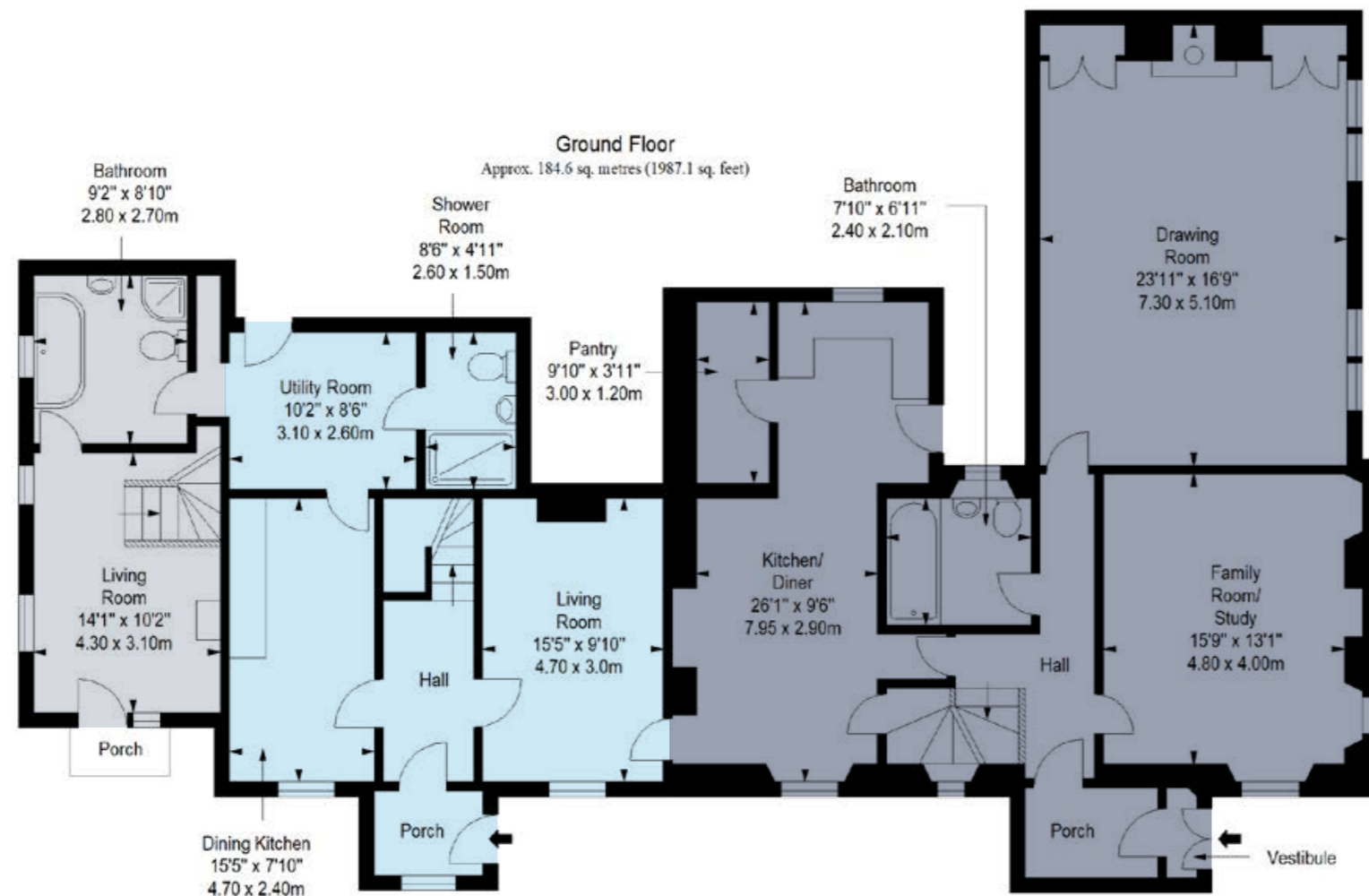
Whiting Bay, Isle of Arran, KA27 8QT

Approximate total area:

379.7 sq. metres (4087.2 sq. feet)

The Glasshouse  Benview Cottage  Benview House  Externals 

The floorplan is for illustrative purposes. All sizes are approximate.





Property Name

Benview House, Benview Cottage & The Glasshouse

Location

Whiting Bay, Isle of Arran, KA27 8QT

Approximate total area:

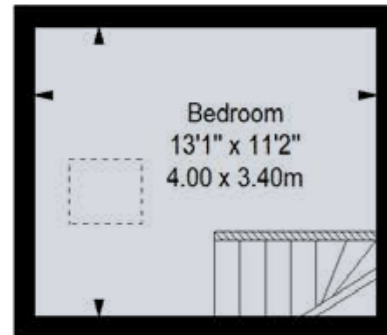
379.7 sq. metres (4087.2 sq. feet)

The Glasshouse  Benview Cottage  Benview House  Externals

The floorplan is for illustrative purposes. All sizes are approximate.

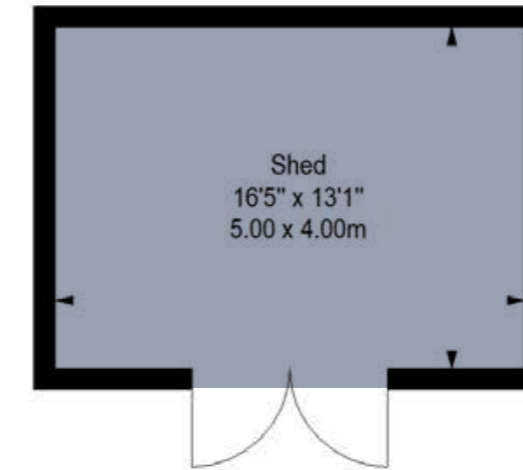
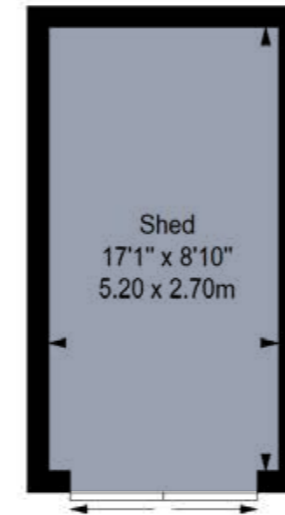
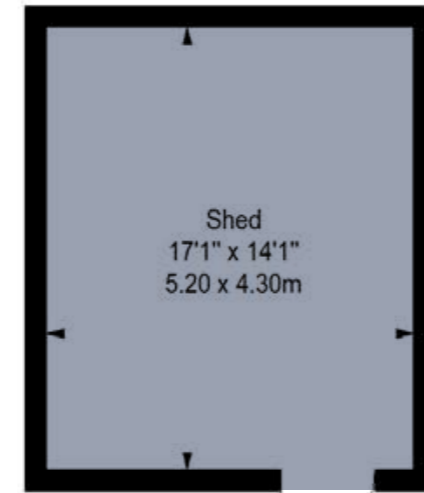
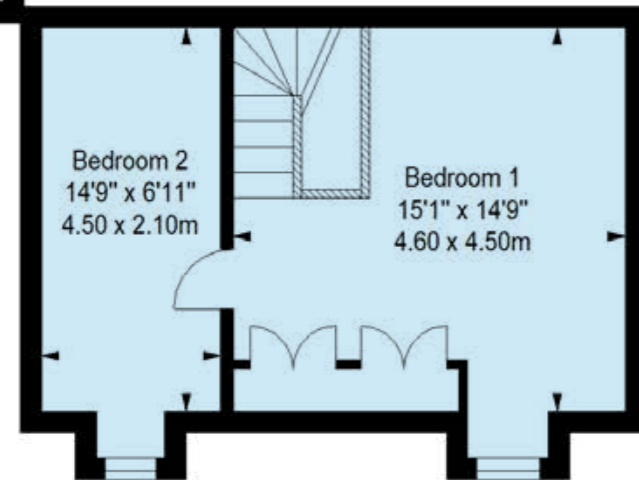
Mezzanine Level (The Glasshouse)

Approx. 13.6 sq. metres (146.4 sq. feet)



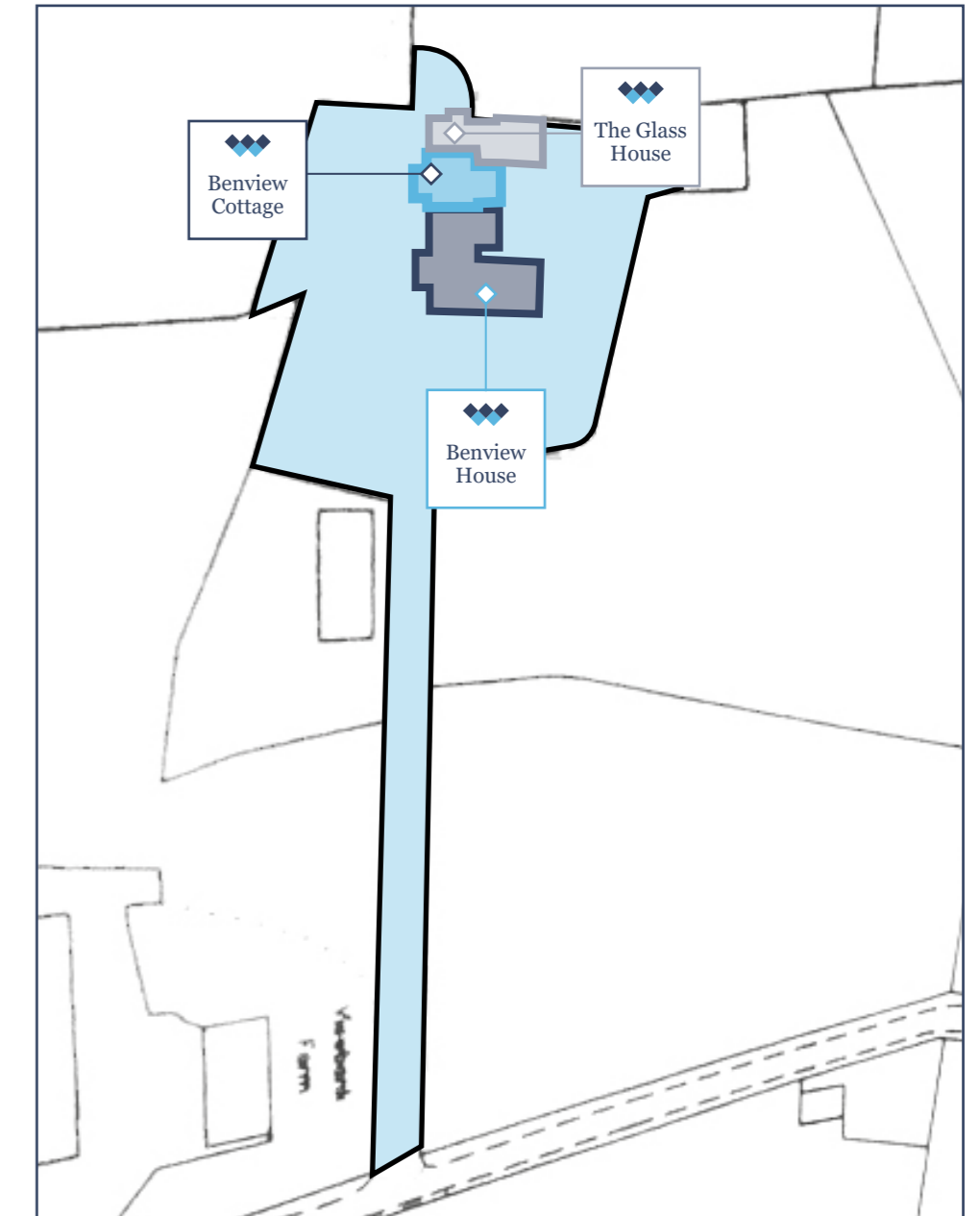
First Floor (Benview Cottage)

Approx. 31.8 sq. metres (342.3 sq. feet)



Included are outbuildings in the garden which have a variety of uses and ripe for conversion (STPP).

Title Plan





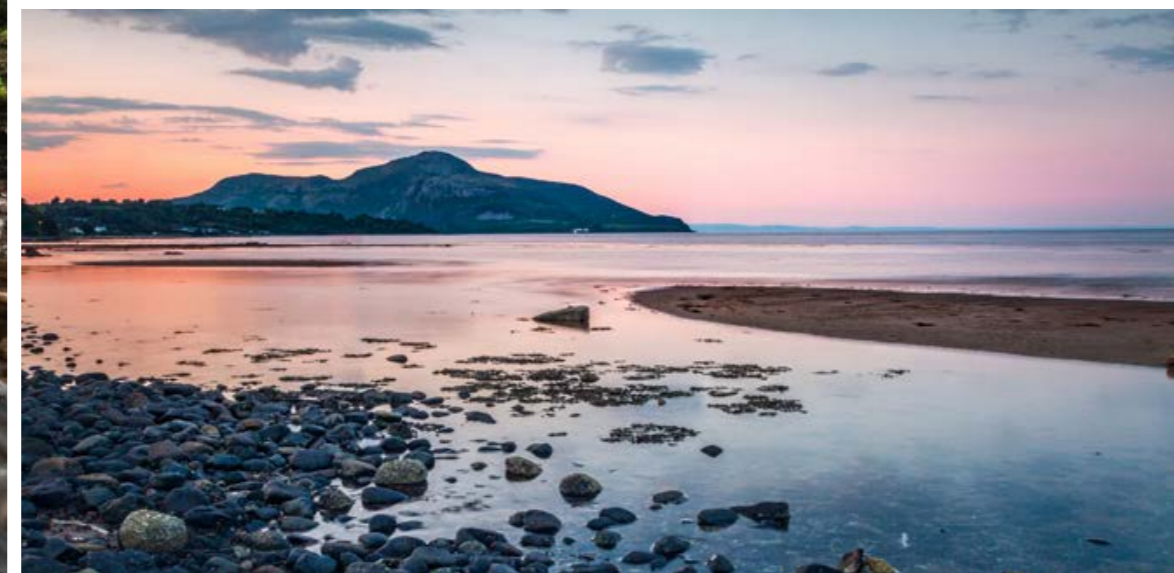
Glenashdale Falls

Whiting Bay, Isle of Arran

Whiting Bay is located on the south-east corner of the island and overlooks the Firth of Clyde, with views to the very southern point of Scotland. The village provides a newsagent, post office, pharmacy, two general food stores, café/bar, restaurant, bistro, hardware store and a farm shop. There is a craft outlet and art gallery, as well as a picturesque 18-hole golf course. Primary schooling is available in the village and secondary schooling is found at the High School in Lamlash. The surrounding area provides some of Arran's most scenic walks, not only along the shoreline, but also through the forest to Glenashdale Falls

The Isle of Arran, approximately 167 square miles in area, is sometimes referred to as "Scotland in miniature", as it is divided into northern highland and southern lowland areas by the Highland Boundary Fault. The island is a mecca for geologists with a wide range of well exposed rocks spanning more than 500 million years. There is also a range of archaeology on the island including the impressive Neolithic 'giants grave' standing stones close to Whiting Bay, which also boasts iron age and Viking remains close by. There are many other stone circles and standing stones on the island most notably those on Machrie Moor.

Arran is approximately 60 miles in circumference and has some of the finest scenery in Scotland, with excellent walking, rambling, sea and fresh water fishing. Tourist attractions include Arran Aromatics, Arran Heritage Museum, Lochranza Distillery and Brodick Castle. There are seven golf courses on the island with 'Benview' ideally positioned for an easy access to Whiting Bay Golf Club.



Directions:

From Brodick Pier turn left and proceed through Lamlash to Whiting Bay. Travel through the village and turn right at the Coffee Pot. Turn onto Golf Course Rd. Travel for approximately 400 metres, turning right at the crossroads towards the Golf Club and proceed for a further 250 metres passing View Bank Farm then turn first left up the track towards Benview.



Glenisle hotel: 01770 600559

Use code WATERMANSGLEN20 to enjoy a 20% discount

Don't miss out!

20% DISCOUNT

If you are visiting the Isle of Arran to view this property, the Glenisle Hotel in Lamlash has an exclusive offer for Watermans' clients. Please call the hotel on 01770 600559 and quote the code **WATERMANSGLEN20** to enjoy a 20% discount on both accommodation and dining. The code also applies to non-residents for coffee/lunch/dinner - just mention **WATERMANSGLEN20** when booking your table or requesting the bill.

Glenisle Hotel is an award-winning boutique hotel on the Isle of Arran, in the charming village of Lamlash. The hotel offers modern, luxury rooms, all with a bath and (or) shower and free Wi-Fi in a comfortable living space. Most rooms boast far-reaching views over the River Clyde and encompassing the Holy Isle - make sure you request a room with a view so you don't miss out!

* Offer not valid on event days



Watermans

Price & Viewings

Please refer to our website www.watermans.co.uk or call us on 0141 430 7055

Edinburgh

5-10 Dock Place, Leith, EH6 6LU
0131 467 5566

Glasgow

193 Bath Street, Glasgow, G2 4HU
0141 430 7055

westcoast@watermans.co.uk
www.watermans.co.uk



These particulars do not constitute part of an offer or contract. All statements contained herein whilst believed to be correct are in no way guaranteed. Intending purchasers should satisfy themselves by inspection or otherwise as to the correctness of each of the statements contained in these particulars. Prospective purchasers are advised to have their interest noted through their solicitor as soon as possible in order that they may be informed in the event of an early closing date being set for the receipt of offers.