



Victoria Cottage  
46 Battersea High Street | London | SW11 3HX









# STEP INSIDE

## Victoria Cottage

---

Escape to the country—without ever leaving the city—in this rare and enchanting 1870s cottage tucked away behind secure electric gates just off Battersea High Street. Concealed from view in its own private domain, this detached family home offers a serene retreat that belies its prime Southwest London location.

Arranged over three floors and lovingly maintained by the same owner for over two decades, the property showcases a perfect blend of period charm and modern convenience. Step inside to discover a spacious reception and dining room, complete with built-in bookshelves framing a characterful fireplace—an inviting setting for family gatherings or quiet evenings at home. Adjacent is a well-appointed kitchen, a separate study, and a convenient downstairs WC.

The principal suite occupies its own private sanctuary on the first floor level, boasting a dedicated dressing area and a luxurious en suite bathroom with both a bath and separate shower. Three further double bedrooms, all with fitted wardrobes, span the first and second floors, served by a stylish family bathroom.































# STEP OUTSIDE

## Victoria Cottage

---

Outside, a secluded garden awaits—ideal for al fresco dining and relaxation. And here lies a truly unique feature: a beautifully crafted 'Shepherd's Hut' complete with underfloor heating. Rare in London, this versatile space can be transformed into a guest room, children's playroom, or home office, all while offering a charming glimpse of the English countryside.

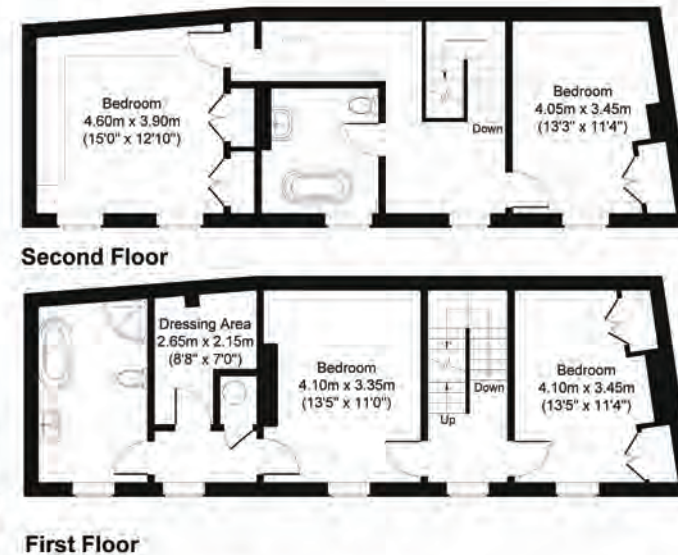
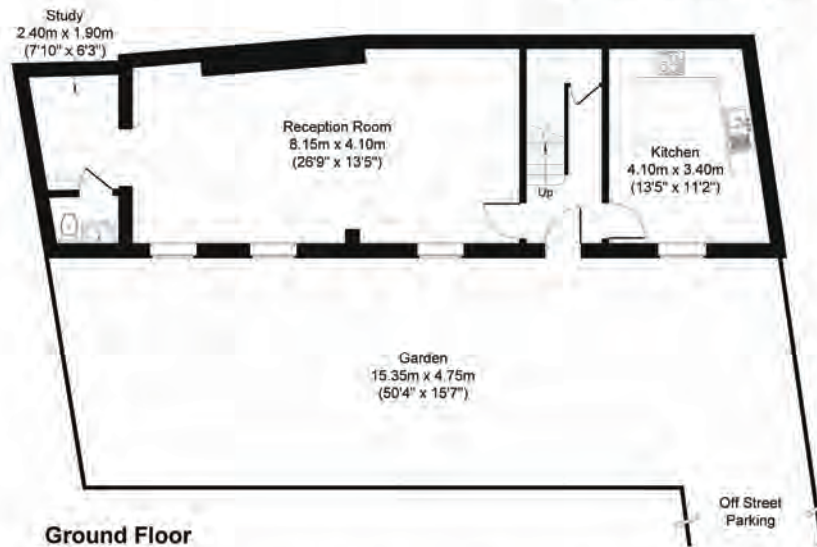
With the added advantages of a private driveway, off-street parking, and easy access to the River Thames and Battersea Square, this hidden gem seamlessly combines the best of London living with the tranquility of a country cottage. Don't miss the opportunity to experience this one-of-a-kind retreat in the heart of vibrant Battersea.





# Victoria Cottage, Battersea High Street SW11 3HX

Approximate Gross internal Area  
 Ground Floor = 59.64 sq m / 642 sq ft  
 First Floor = 53.18 sq m / 572 sq ft  
 Second Floor = 52.58 sq m / 566 sq ft  
 Total = 165.40 sq m / 1780 sq ft



This Plan is for layout guidance only. Not drawn to scale unless stated. Windows and door openings are approximate. Whilst every care is taken in the preparation of this plan, please check all dimensions shapes and compass bearing before making any decisions reliant upon them.

Produced for Fine & Country

EPC Pending





**DANIEL WHITE**  
DIRECTOR | PARTNER AGENT



**JESSICA SULLY**  
PARTNER AGENT

Fine & Country Wimbledon  
60 High Street, Wimbledon, London SW19 5EE  
020 8798 2135 | [wimbledon@fineandcountry.com](mailto:wimbledon@fineandcountry.com)

