

53 Lowe Street
Hugglescote, Coalville, LE67 2EZ

Offers over £300,000



Brief Description

Located on Lowe Street in the POPULAR VILLAGE of Hugglescote, this delightful MODERN THREE DOUBLE BEDROOM DETACHED house is a true gem. Built just 2 years ago by the reputable DAVIDSON HOMES, this property exudes quality and style.

Nestled in a PEACEFUL CUL-DE-SAC with only a handful of neighbouring homes, this house offers a PRIVATE LIVING ENVIRONMENT.

Upon entering, you are greeted by a welcoming interior with stairs leading to the first floor. The ground floor features a BRIGHT AND AIRY LIVING ROOM with a floor-to-ceiling window, complemented by ELEGANT WOOD PANEL EFFECT FLOORING. The lounge seamlessly flows into the dining kitchen, where SLEEK light grey gloss units, integrated appliances, and French doors opening to the garden create a perfect space for entertaining. The kitchen also offers an open plan UTILITY AREA, leading into a GROUND FLOOR WC, providing convenience and functionality.

This delightful property boasts three generously sized bedrooms. The master bedroom has fitted wardrobes and a modern en-suite featuring a double shower unit. Bedrooms 2 and 3 are equally inviting, providing ample space for rest and relaxation.

The bathroom in this home is STUNNING, with modern fixtures and STYLISH FINISHES. The 4-piece suite is both elegant and functional, offering a serene space to unwind and rejuvenate.

Moving outside, the REAR GARDEN is a peaceful oasis with a paved patio, planted borders, and a WELL-MAINTAINED LAWN. The walled and fenced boundary ensures privacy, while the side gate provides convenient access. The front garden is equally charming, with planted borders and a neatly manicured lawn.

Parking will never be an issue with the DOUBLE WIDTH DRIVEWAY leading to a SINGLE INTEGRAL GARAGE with light and power supply.

With its well-maintained presentation and thoughtful design, this house is a true haven for those seeking a modern lifestyle in a PRIVATE SETTING. Don't miss the opportunity to make this house your home in the heart of Hugglescote





ON THE GROUND FLOOR

Entrance Hall

Living Room
11'3" x 15'10" (3.43m x 4.83m)

Kitchen Diner
14'2" x 12'4" (4.32m x 3.76m)

Utility Area
4'8" x 5'3" (1.42m x 1.60m)

Ground Floor W.C.
3'6" x 5'5" (1.07m x 1.65m)

ON THE FIRST FLOOR

Landing

Master Bedroom
10'11" x 10'8" (3.33m x 3.25m)

En Suite
7'7" x 3'9" (2.31m x 1.14m)

Bedroom 2
8'7" x 12'8" (2.62m x 3.86m)

Bedroom 3
13'4" x 8'6" (4.06m x 2.59m)

Family Bathroom
9'8" x 5'6" (2.95m x 1.68m)

ON THE OUTSIDE

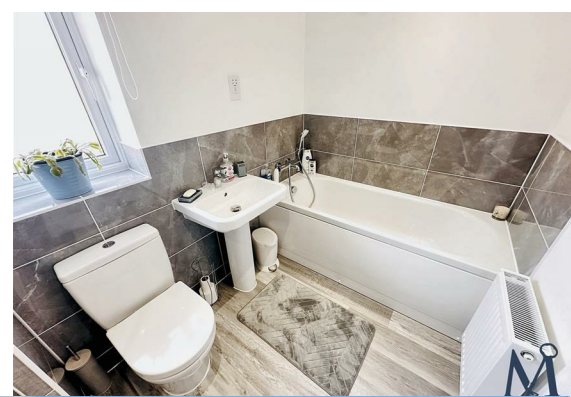
Front Garden

Rear Garden

Driveway

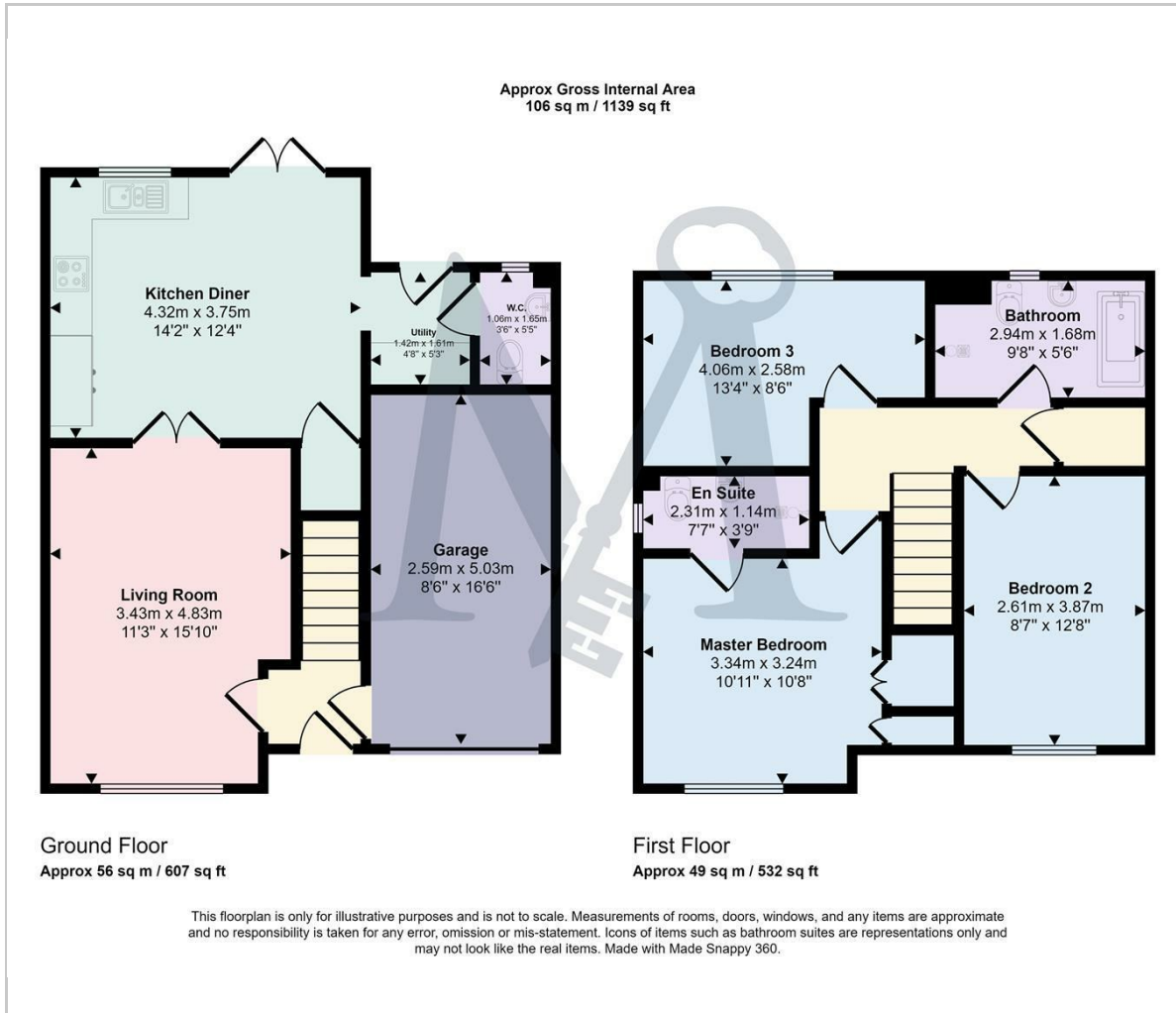
Single Garage
8'6" x 16'6" (2.59m x 5.03m)







Floor Plan



Viewing

Please contact our Maynard Estates Office on 01530 682886 if you wish to arrange a viewing appointment for this property or require further information.

These particulars, whilst believed to be accurate are set out as a general outline only for guidance and do not constitute any part of an offer or contract. Intending purchasers should not rely on them as statements of representation of fact, but must satisfy themselves by inspection or otherwise as to their accuracy. No person in this firm's employment has the authority to make or give any representation or warranty in respect of the property.

2-4 North Street, Whitwick, Coalville, Leicestershire, LE67 5HA
Tel: 01530 682886 Email: sales@maynardestates.co.uk maynardestates.co.uk

Area Map



Energy Efficiency Graph

