



84a Leicester Road
Whitwick, Coalville, LE67 5GJ

Offers over £300,000



Brief Description

Maynard Estates are proud to present to the market this CHARMING, DETACHED HOME offering a delightful and versatile living experience. This property boasts two spacious reception rooms. The 20FT LIVING ROOM is perfect for entertaining family and friends. The SEPARATE SITTING ROOM WITH FEATURE WOOD BURNING STOVE provides a cosy space to unwind and relax on those winter nights, creating a warm and inviting atmosphere.

The MODERN DINING KITCHEN COMPLETE WITH FITTED APPLIANCES and a CONTEMPORARY FAMILY BATHROOM suite, ensures this home is ready to move into and requires minimum effort to make it your perfect new home. There is a further separate WC adding convenience to this wonderful home. With THREE DOUBLE BEDROOMS over two floors, providing plenty of room for the whole family to enjoy within a spacious and relaxing environment.

Off road parking is a breeze with a DRIVEWAY FOR UP TO FOUR VEHICLES, ensuring convenience for you and your visitors. The PRIVATE SOUTH-FACING GARDEN is a tranquil oasis and is the standout feature due to its GENEROUS SIZE AND BEAUTIFUL PRESENTATION; perfect for enjoying the outdoors in the comfort of your own home in the heart of the national forest with its private and pleasant outlook. With excellent woodland walks on your doorstep and full village amenities located close at hand.

This property offers VERSATILE AND SPACIOUS ACCOMMODATION, making it easy to tailor the space to suit your needs. Don't miss out on the opportunity to make this stylish property your new home.

Furthermore, the property is DOUBLE GLAZED AND GAS CENTRAL HEATED and comes offered available with NO UPWARD CHAIN. Book a viewing today and discover the endless possibilities that this unique property has to offer.





ON THE GROUND FLOOR

Entrance Porch

Entrance Hall

Sitting Room
11'6" x 13'9 (3.51m x 4.19m)

Kitchen Diner
10'0" x 13'9" (3.05m x 4.19m)

Lounge Diner

Bedroom One

Rear Hall

Family Bathroom

Separate WC

ON THE FIRST FLOOR

Landing

Bedroom Two

Bedroom Three

ON THE OUTSIDE

Rear Garden

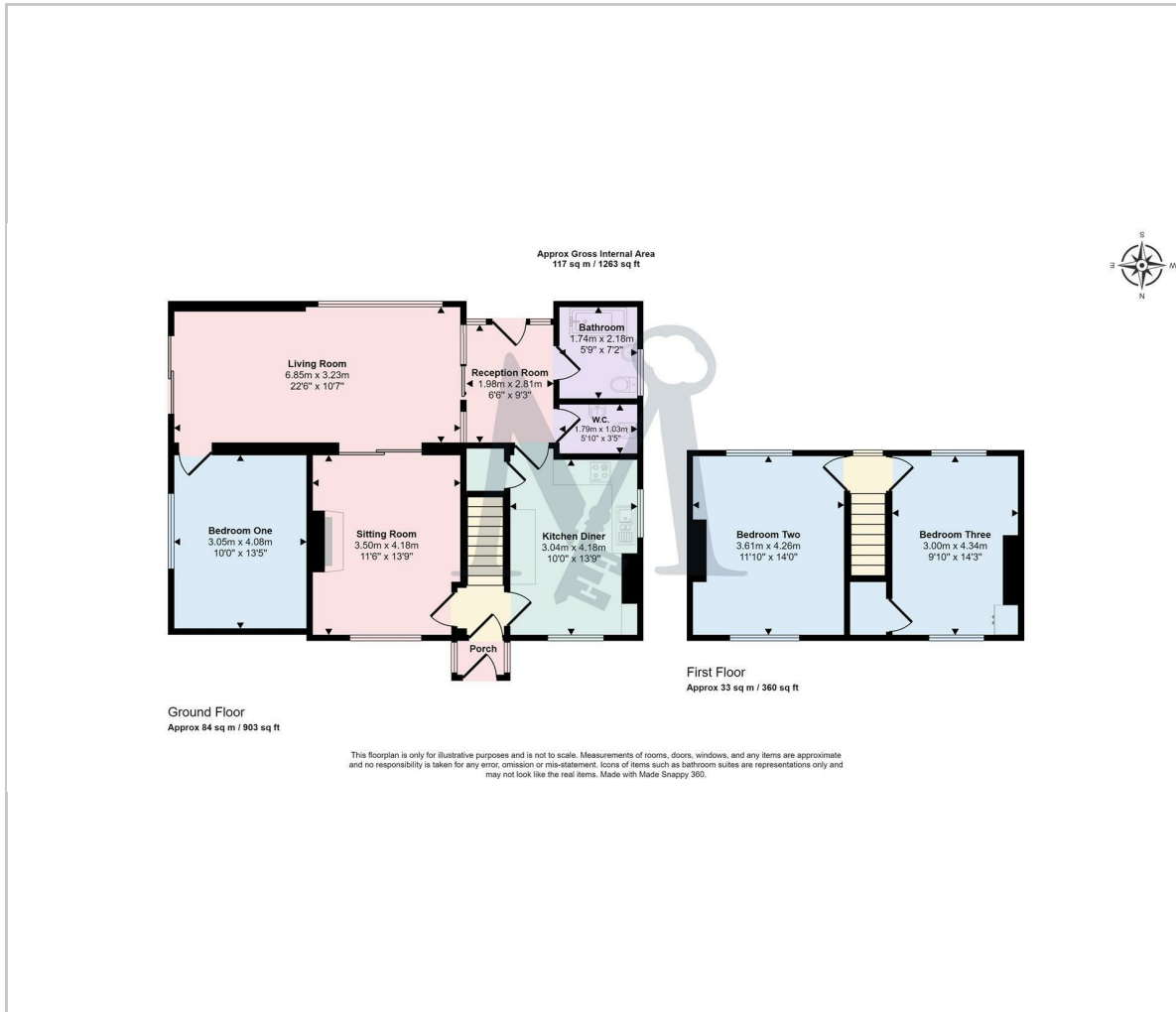
Driveway







Floor Plan



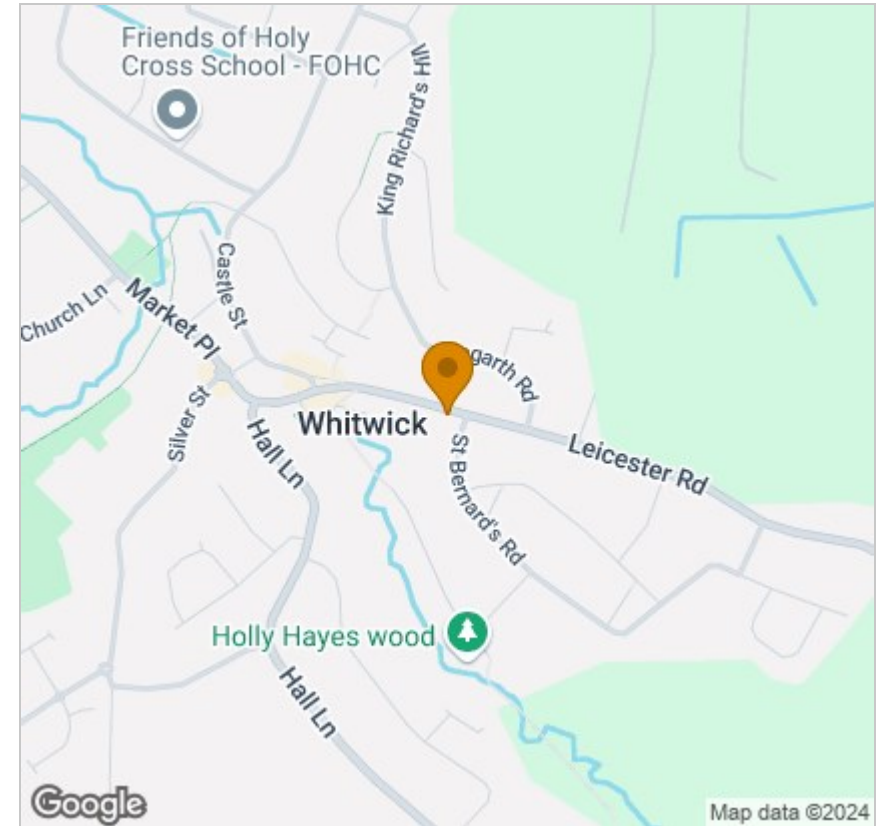
Viewing

Please contact our Maynard Estates Office on 01530 682886 if you wish to arrange a viewing appointment for this property or require further information.

These particulars, whilst believed to be accurate are set out as a general outline only for guidance and do not constitute any part of an offer or contract. Intending purchasers should not rely on them as statements of representation of fact, but must satisfy themselves by inspection or otherwise as to their accuracy. No person in this firm's employment has the authority to make or give any representation or warranty in respect of the property.

2-4 North Street, Whitwick, Coalville, Leicestershire, LE67 5HA
Tel: 01530 682886 Email: sales@maynardestates.co.uk maynardestates.co.uk

Area Map



Energy Efficiency Graph

