



Coleorton Hall Constable Way
Coleorton, Coalville, LE67 8FZ

£280,000



Brief Description

'The Milton' offers a LUXURIOUS LIVING experience within the HISTORIC COLEORTON HALL ESTATE. This high-end apartment, located on the top floor of the 18th-century hall, presents a unique opportunity to reside in a period property surrounded by 50 ACRES OF PRIVATE GROUNDS.

As you step into 'The Milton', you are greeted by SPACIOUS LIVING ACCOMMODATION that exudes warmth and comfort. The dual aspect views from the ORIGINAL SASH WINDOWS flood the room with natural light, creating a serene ambiance. The ornamental fireplace adds character, while the bespoke wall unit offers both storage space and a dedicated area for work or study.

The kitchen is a blend of contemporary design and traditional charm, featuring BRAND-NEW FITTED UNITS and integrated Neff appliances. With ample storage, generous worktop space, and built in breakfast bar, this kitchen is a culinary delight for any cooking enthusiast.

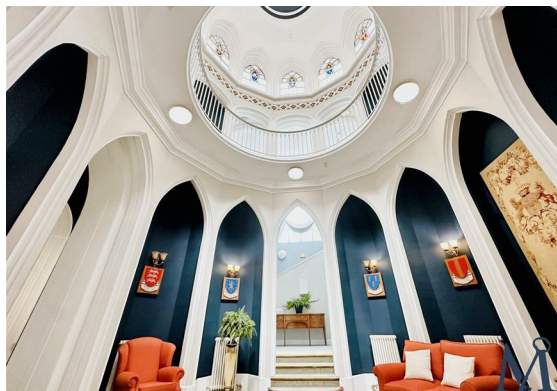
Both bedrooms in 'The Milton' are GENEROUSLY SIZED, providing ample room for a comfortable night's sleep and additional furniture. One of the bedrooms even includes fitted wardrobe space, ensuring practicality meets elegance in every corner of this apartment.

The SHOWER ROOM is a modern oasis, boasting a walk-in rain shower, a stylish vanity unit with a washbasin, and a WC. Impeccably finished, this shower room complements the sophisticated design of the rest of the apartment.

The property itself features a PRIVATE PARKING SPACE, a LARGE SINGLE GARAGE complete with a mezzanine floor for additional storage, as well as power and lighting - a rare find indeed.

Living in 'The Milton' means embracing a lifestyle of luxury within a historic setting. From the GRAND ENTRANCE via electric gates to the sweeping gravel driveway leading up to Coleorton Hall, every moment spent in this apartment is a testament to refined living. Don't miss the chance to make 'The Milton' your new home in this exclusive estate.

Tenure: Leasehold, 105 years remaining with charges applicable.





ON THE INSIDE

Entrance Hall

Lounge Diner

18'10" x 20'3" (5.74m x 6.17m)

Kitchen

12'6" x 10'2" (3.81m x 3.10m)

Master Bedroom

15'1" x 9'3" (4.60m x 2.82m)

Bedroom 2

Shower Room

9'7" x 6'0" (2.92m x 1.83m)

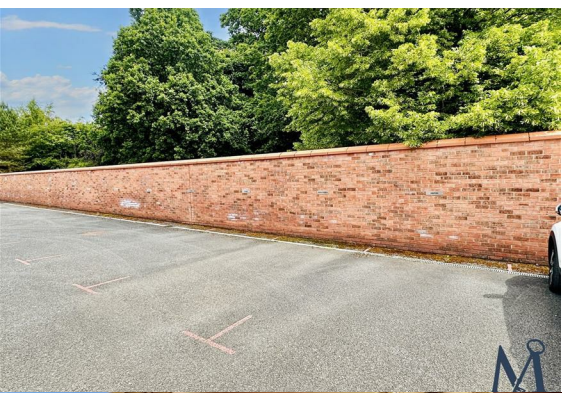
ON THE OUTSIDE

Large Single Garage

8'6" x 15'9" (2.59m x 4.80m)

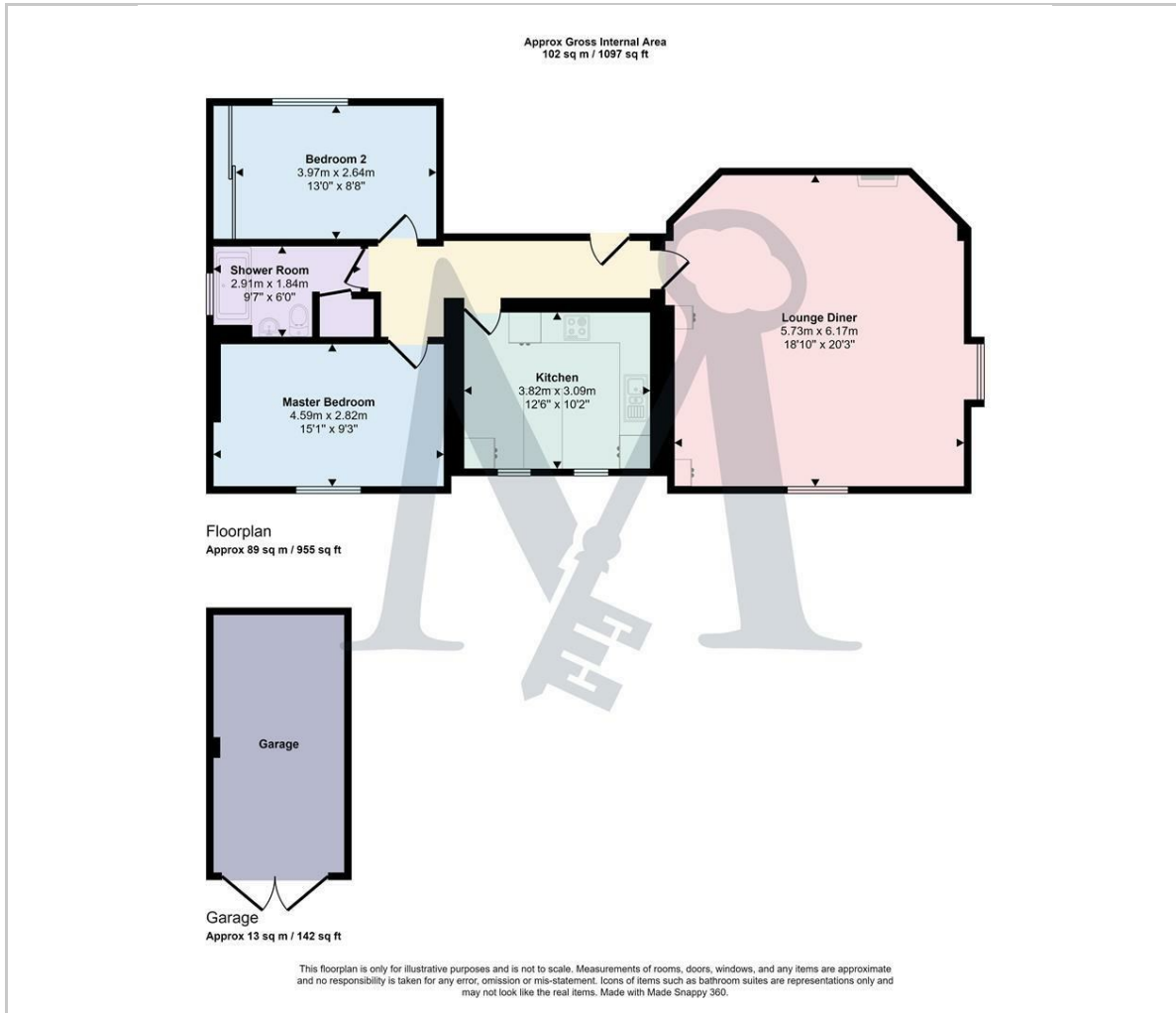
Off Street Parking







Floor Plan



Viewing

Please contact our Maynard Estates Office on 01530 682886 if you wish to arrange a viewing appointment for this property or require further information.

These particulars, whilst believed to be accurate are set out as a general outline only for guidance and do not constitute any part of an offer or contract. Intending purchasers should not rely on them as statements of representation of fact, but must satisfy themselves by inspection or otherwise as to their accuracy. No person in this firm's employment has the authority to make or give any representation or warranty in respect of the property.

2-4 North Street, Whitwick, Coalville, Leicestershire, LE67 5HA
Tel: 01530 682886 Email: sales@maynardestates.co.uk maynardestates.co.uk

Area Map



Energy Efficiency Graph

