



1 Queen Street  
Markfield, LE67 9WB

£550,000

4 2 2





## Brief Description

Welcome to this CHARMING BUNGALOW in the sought-after Markfield location. Situated in a quiet area, this versatile property offers MODERN AND EXTENSIVE ACCOMMODATION with NO UPWARD CHAIN, making this home ready for its new owners.

The abundance of natural light creates a warm and inviting atmosphere throughout the home. The interrupted views provide a PLEASANT OUTLOOK and PRIVATE feel to this wonderful home. SPREAD OVER 2114SQFT, the property offers a separate STUDY and spacious living areas which includes a 19FT LIVING ROOM which boasts a COZY LOG BURNER and French doors that open onto the garden, creating a seamless indoor-outdoor flow, ideal for entertaining guests and family alike.

The wooden kitchen is a chef's dream, featuring a RANGEMASTER DOUBLE OVEN & GRILL WITH A 5-RING GAS HOB AND GRIDDLE PLATE. The OPEN PLAN DINING AREA off the kitchen is perfect for entertaining. The kitchen itself is equipped with an integrated fridge and dishwasher, and there is also a UTILITY AREA and separate WC located within the homes garage area. The OVERSIZED 19'6 X 28'4 DOUBLE GARAGE features an electric door for convenience, providing ample space for parking and storage.

The property offers FOUR DOUBLE BEDROOMS, ensuring everyone has their own comfortable retreat, including a master bedroom with its own CONTEMPORARY EN-SUITE SHOWER for privacy. The MAIN FAMILY BATHROOM is spacious and well-appointed adding further convenience.

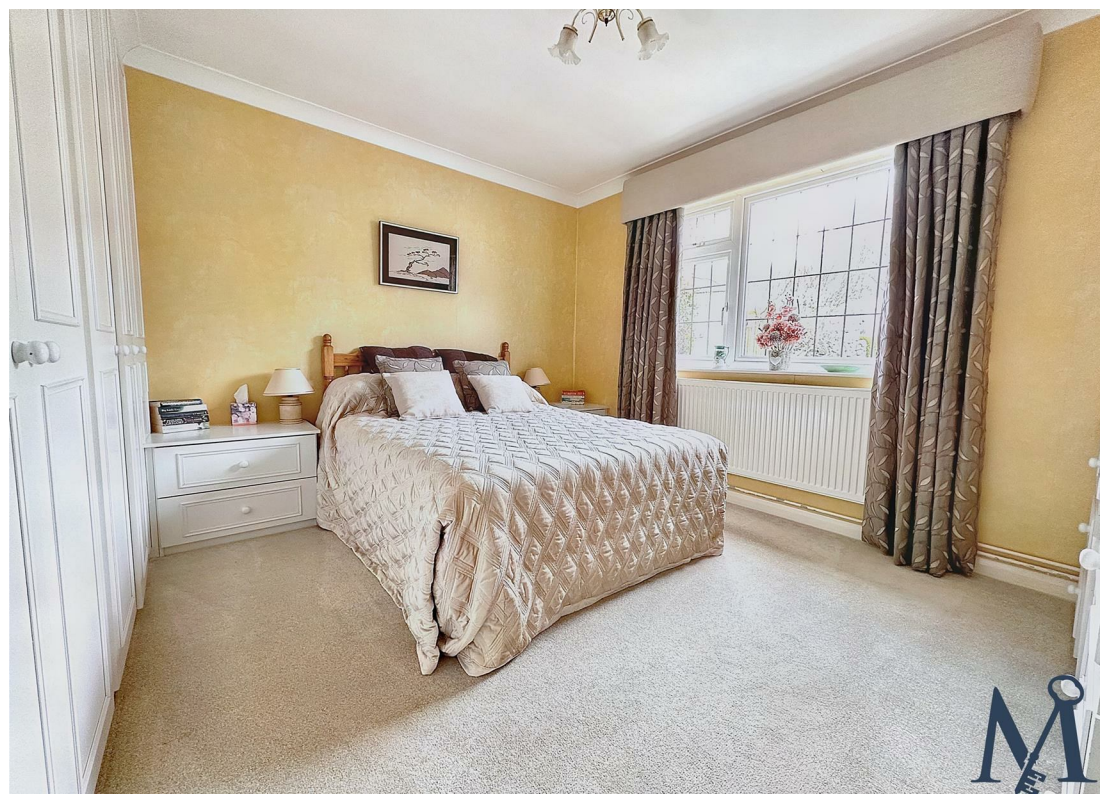
Step outside to discover the SUBSTANTIAL AND ESTABLISHED SOUTH-FACING REAR GARDEN, perfect for enjoying the sunshine. Enjoy the outdoors on the paved patio, large lawn, and decking with an array of planted borders with its shrubs and trees. A LARGE BLOCK-PAVED DRIVEWAY provides ample parking space for multiple vehicles.

The location of this home is unbeatable, conveniently located nearby shops, pubs, restaurants, doctors, and major road links.

Don't miss out on the opportunity to make this charming bungalow your own. Contact Maynard Estates today.







## ON THE INSIDE

Entrance Hall

Study  
7'6" x 8'4" (2.29m x 2.54m)

Living Room  
11'5" x 19'11" (3.48m x 6.07m)

Kitchen  
14'1" x 8'10" (4.29m x 2.69m)

Dining Room  
11'6" x 14'10" (3.51m x 4.52m)

Master Bedroom  
12'2" x 12'7" (3.71m x 3.84m)

En-Suite  
5'3" x 6'9" (1.60m x 2.06m)

Bedroom Two  
11'6" x 9'7" (3.51m x 2.92m)

Bedroom Three  
8'9" x 11'6" (2.67m x 3.51m)

Bedroom Four  
9'9" x 8'10" (2.97m x 2.69m)

Family Bathroom  
9'3" x 5'4" (2.82m x 1.63m)

Utility Room  
12'2" x 11'2" (3.71m x 3.40m)

Separate WC

## ON THE OUTSIDE

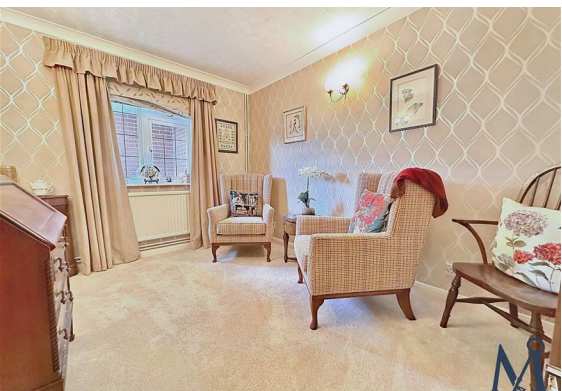
Rear Garden

Front Garden

Driveway

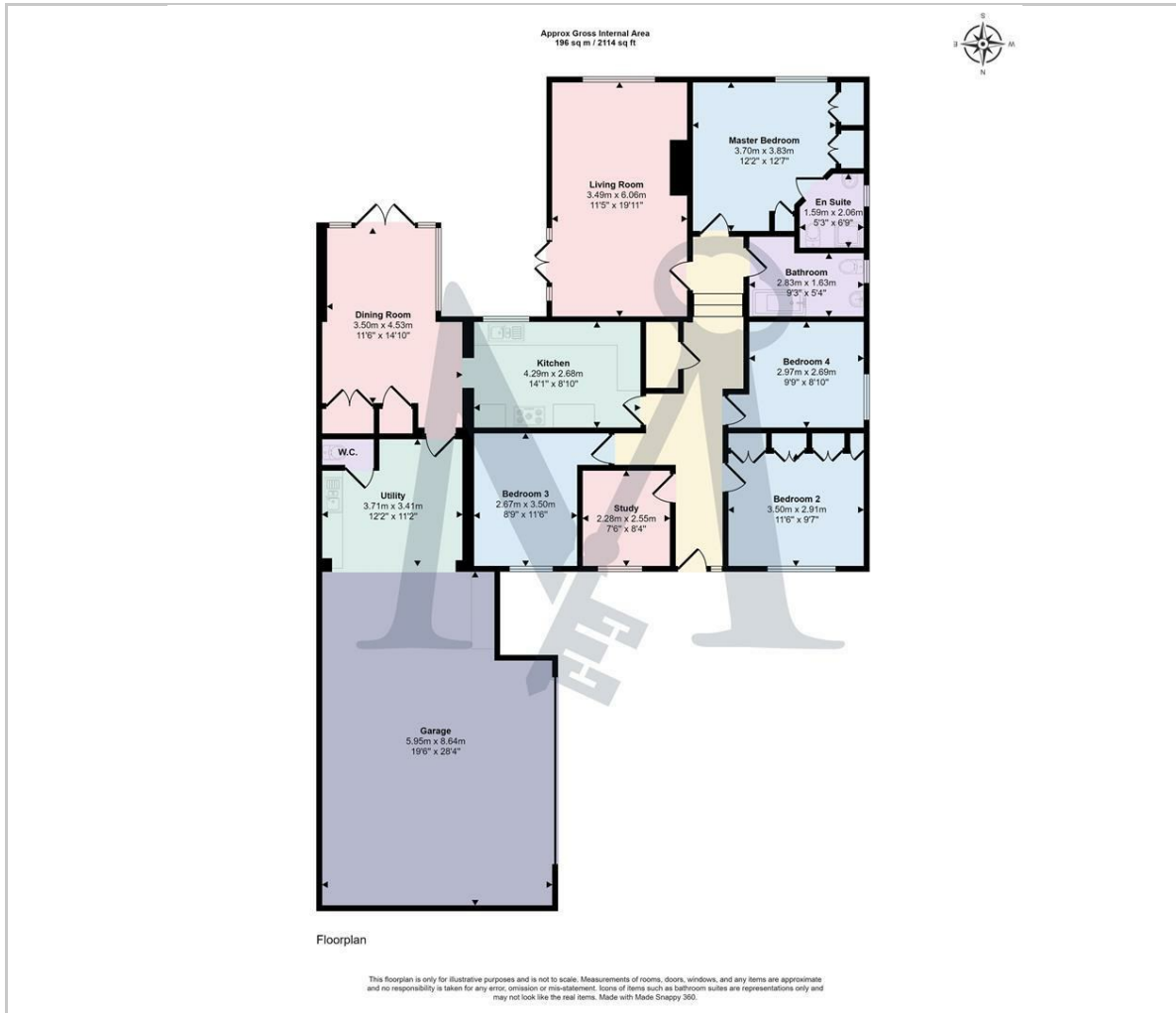
Oversized Double Garage  
19'6" x 28'4" (5.94m x 8.64m)







## Floor Plan



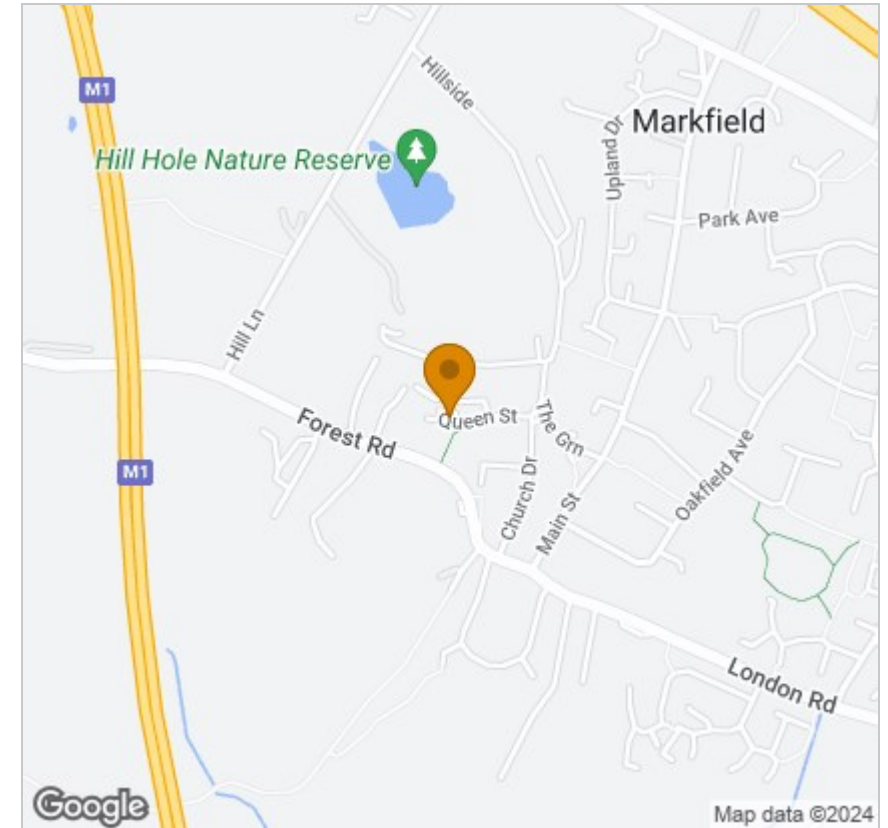
## Viewing

Please contact our Maynard Estates Office on 01530 682886 if you wish to arrange a viewing appointment for this property or require further information.

These particulars, whilst believed to be accurate are set out as a general outline only for guidance and do not constitute any part of an offer or contract. Intending purchasers should not rely on them as statements of representation of fact, but must satisfy themselves by inspection or otherwise as to their accuracy. No person in this firm's employment has the authority to make or give any representation or warranty in respect of the property.

Unit 15 Whitwick Business Centre Stenson Road, Coalville, Leicestershire, LE67 4JP  
Tel: 01530 682886 Email: dan@maynardestates.co.uk maynardestates.co.uk

## Area Map



## Energy Efficiency Graph

