



15 Hedge Road
Hugglescote, Coalville, LE67 2GJ

£335,000



Brief Description

Welcome to this STUNNING RECENTLY RENOVATED home in the charming Hugglescote Village. Located at the END OF A CUL-DE-SAC ON A CORNER PLOT, this home offers privacy and tranquility.

As you step inside, you'll be greeted by an abundance of natural light and EXTENSIVE ACCOMMODATION spread over 1262sqft. The EXTENDED CONSERVATORY provides an additional area for relaxation or entertaining guests along with the SPACIOUS BAY FRONTED LIVING ROOM which provides a comfortable space for relaxation. There is also a SEPARATE HOME OFFICE, ideal for those who work from home or as a playroom if required.

The kitchen is a chef's dream, featuring a QUARTZ WORKTOP, open plan dining area, and INTEGRATED APPLIANCES. The kitchen is fully equipped with a full height fridge, freezer and dishwasher, integrated oven & microwave grill along with a spacious separate utility which is perfect for all your laundry and storage needs. The porcelain tiled flooring adds a touch of elegance to the space in this area of the home.

The house boasts a master bedroom and three additional good-sized bedrooms. The MODERN EN-SUITE is both STYLISH and FUNCTIONAL along with the main family bathroom offering further scope for enhancing, allowing you to put your personal touch on it.

Outside, you'll find a GOOD-SIZED REAR GARDEN, perfect for outdoor activities and enjoying the sunshine. The gravelled front garden is easily maintained, providing a neat and tidy entrance to the property. The LARGE DRIVEWAY and DETACHED DOUBLE GARAGE ensure ample parking space for multiple vehicles along with plenty of storage.

Located just a 2-minute commute into Twon, this home offers convenience and easy access to amenities. Nearby parks such as Snibston Meadow Dog Exercise Field and Millfield Recreation Ground provide opportunities for outdoor recreation.

Don't miss out on the opportunity to see this exceptional home. Contact Maynard Estates today to secure your private viewing.





ON THE GROUND FLOOR

Entrance Hall

Home Office

7'1" x 9'2" (2.16m x 2.79m)

Living Room

12'1" x 14'5" (3.68m x 4.39m)

Kitchen Diner

23'0" x 8'1" (7.01m x 2.46m)

Conservatory

9'2" x 10'8" (2.79m x 3.25m)

Utility Room

7'7" x 7'0" (2.31m x 2.13m)

Ground Floor WC

ON THE FIRST FLOOR

Landing

Master Bedroom

12'1" x 11'8" (3.68m x 3.56m)

En-Suite

4'9" x 6'1" (1.45m x 1.85m)

Bedroom Two

8'8" x 11'3" (2.64m x 3.43m)

Bedroom Three

7'7" x 11'9" (2.31m x 3.58m)

Bedroom Four

7'7" x 9'3" (2.31m x 2.82m)

Family Bathroom

6'2" x 8'6" (1.88m x 2.59m)

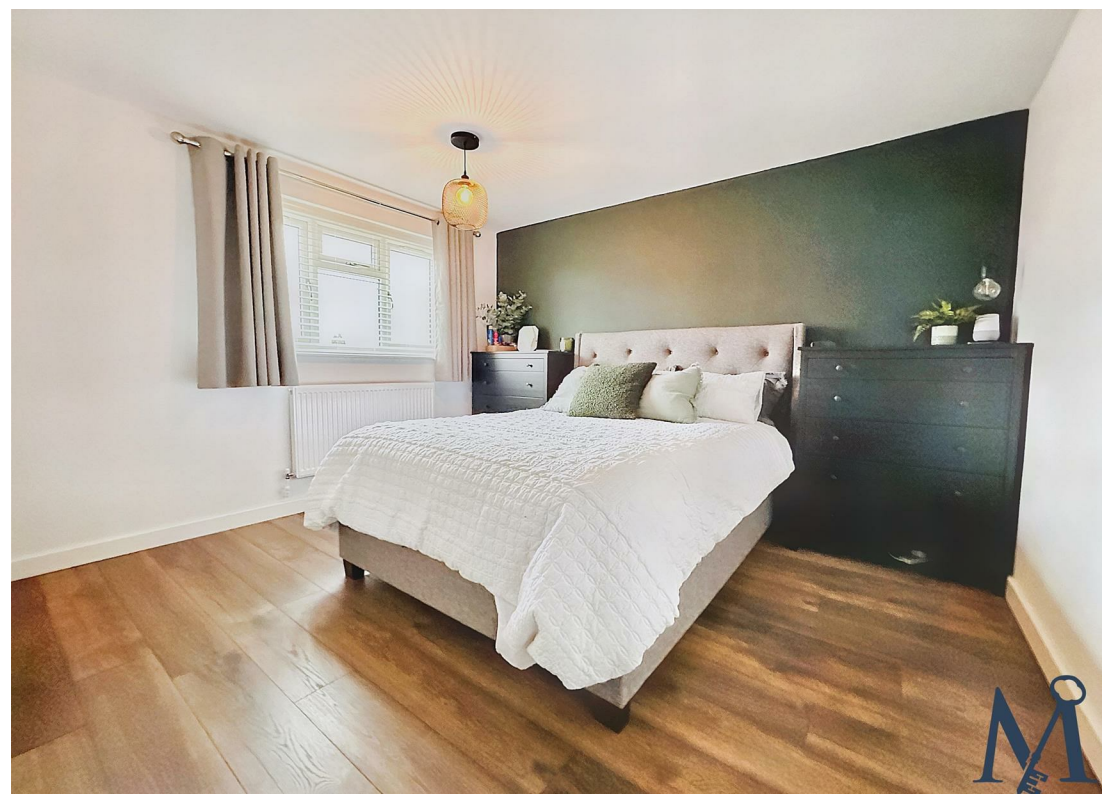
ON THE OUTSIDE

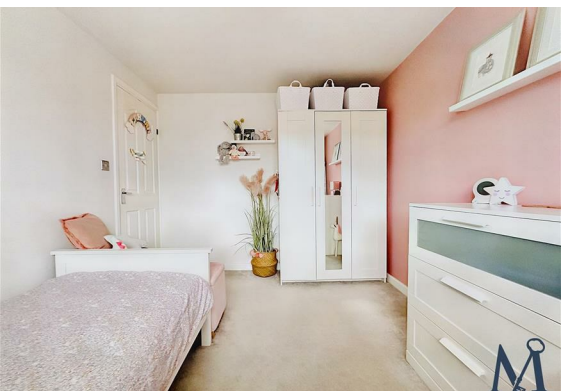
Rear Garden

Front Garden

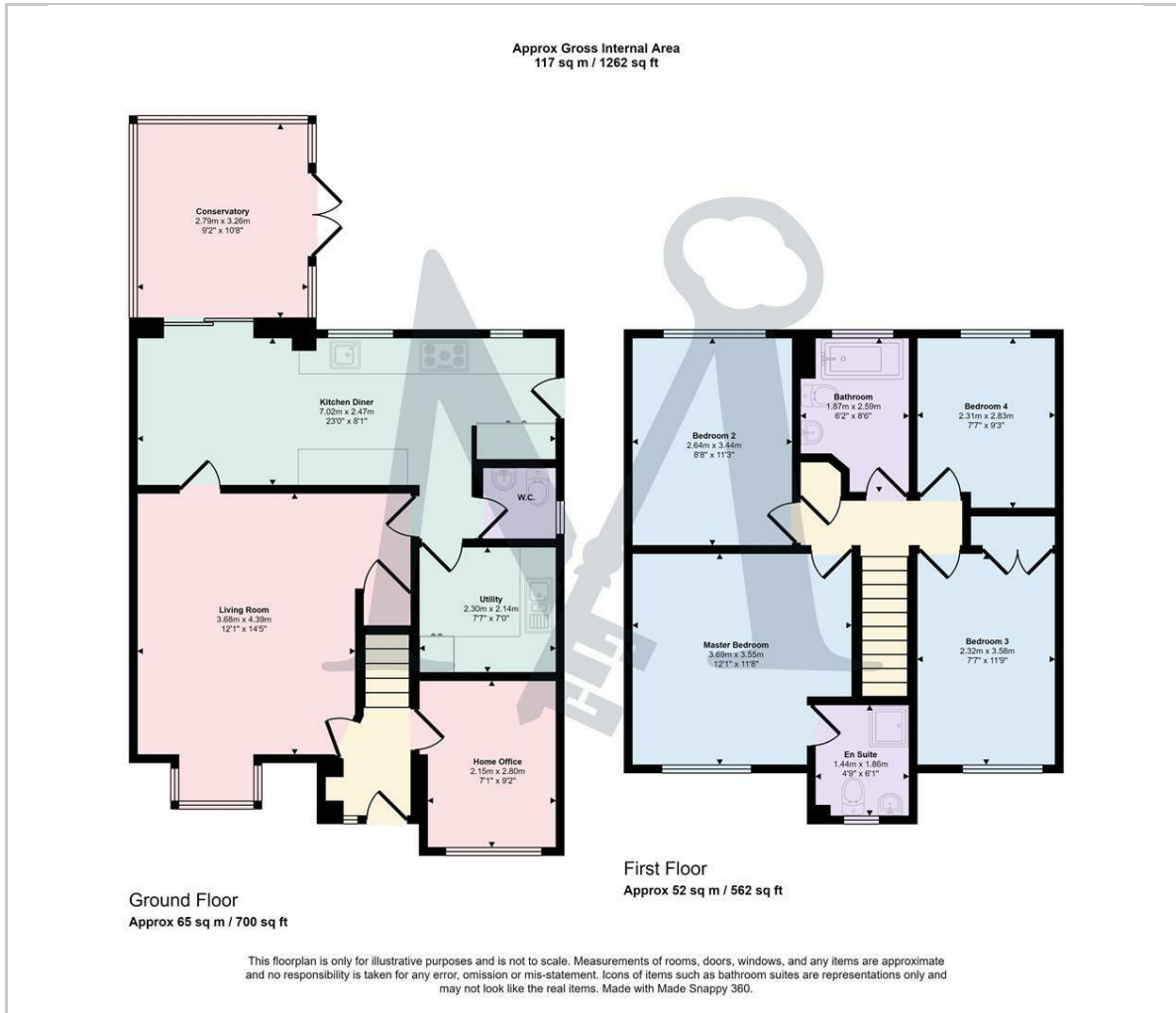
Drive

Double Garage





Floor Plan



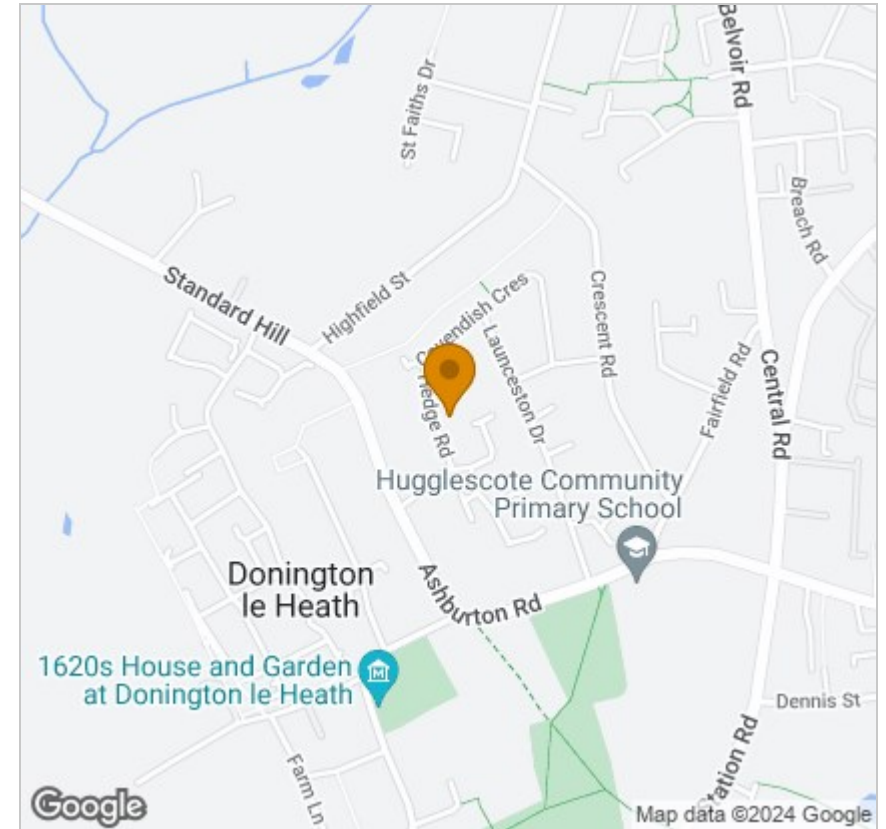
Viewing

Please contact our Maynard Estates Office on 01530 682886 if you wish to arrange a viewing appointment for this property or require further information.

These particulars, whilst believed to be accurate are set out as a general outline only for guidance and do not constitute any part of an offer or contract. Intending purchasers should not rely on them as statements of representation of fact, but must satisfy themselves by inspection or otherwise as to their accuracy. No person in this firm's employment has the authority to make or give any representation or warranty in respect of the property.

2-4 North Street, Whitwick, Coalville, Leicestershire, LE67 5HA
Tel: 01530 682886 Email: sales@maynardestates.co.uk maynardestates.co.uk

Area Map



Energy Efficiency Graph

