



128

23 Farmers Way

Hugglescote, Coalville, LE67 2EG

Offers over

FARMERS WAY



4



2



2



3

B

Brief Description

Introducing this IMMACULATELY PRESENTED FAMILY HOME situated on a CORNER PLOT on the Hugglescote / Donington Le Heath border. ENHANCED BY THE CURRENT OWNER, this home offers FLAWLESS PRESENTATION THROUGHOUT and is bathed in natural light, thanks to its skylights and VAULTED CEILINGS which helps create a seamless indoor-outdoor flow with the extensive internal accommodation spread over approximately 1400sqm.

A large entrance hall welcomes you into this wonderful home with immediate access to the convenience of a WC, with a PLAYROOM or must have STUDY located on the ground floor for those working from home. A dual aspect and SPACIOUS LIVING ROOM incorporating a feature bay window provides the IDEAL SPACE TO RELAX AND UNWIND of an evening.

The kitchen is a chef's dream and a true highlight of this home, having an island with an inset hob, and further INTEGRATED APPLIANCES that include; a fridge freezer, dishwasher, double oven, and wine fridge. A feature pendant light adds a touch of elegance over the DINING AREA, while the SEPARATE UTILITY ROOM offers convenience. THE OPEN PLAN FAMILY ROOM, complete with vaulted ceiling and skylight that adds to the already bright and airy atmosphere. The open-plan live-in kitchen diner opens onto the rear garden, creating a seamless indoor-outdoor flow and provides AMPLE SPACE for relaxation for all the family.

With 4 bedrooms, including an en-suite to the master bedroom which also benefits from FITTED MIRRORED WARDROBES, this home is perfect for families. The main family bathroom features a FOUR-PIECE SUITE, adding a touch of luxury, complete with a bath, WC, wash hand basin and separate double shower unit.

The LANDSCAPED FRONT AND REAR GARDENS are perfect for outdoor entertaining, with an Indian sandstone patio providing the ideal spot for alfresco dining. The CORNER PLOT also includes a single DETACHED GARAGE with a rear separate store, as well as a LARGE DRIVEWAY providing off road parking for several vehicles.







ON THE GROUND FLOOR

Entrance Hall

Ground Floor W/C

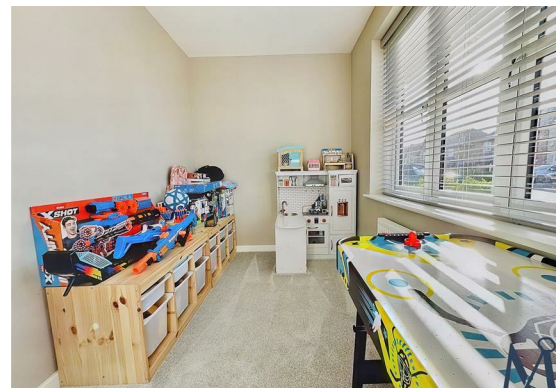
Study
10'6" x 6'5" (3.20m x 1.96m)

Living Room
10'11" x 16'2" (3.33m x 4.93m)

Kitchen Diner
15'7" x 10'6" (4.75m x 3.20m)

Open Plan Family Room
10'2" x 9'7" (3.10m x 2.92m)

Utility Room
5'7" x 7'7" (1.70m x 2.31m)



ON THE FIRST FLOOR

Landing

Master Bedroom
10'8" x 10'7" (3.25m x 3.23m)

En-Suite
5'7" x 7'0" (1.70m x 2.13m)

Bedroom Two
13'11" x 8'2" (4.24m x 2.49m)

Bedroom Three
8'4" 10'9" (2.54m 3.28m)

Bedroom Four
6'11" x 8'6" (2.11m x 2.59m)

4PC Family Bathroom
11'6" 7'9" (3.51m 2.36m)



ON THE OUTSIDE

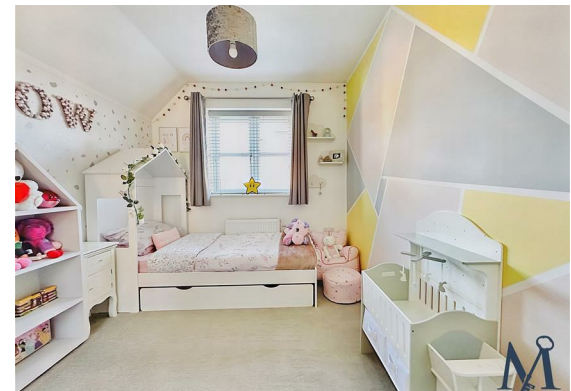
Rear Garden

Front Garden

Single Garage
10'4" x 18'6" (3.15m x 5.64m)

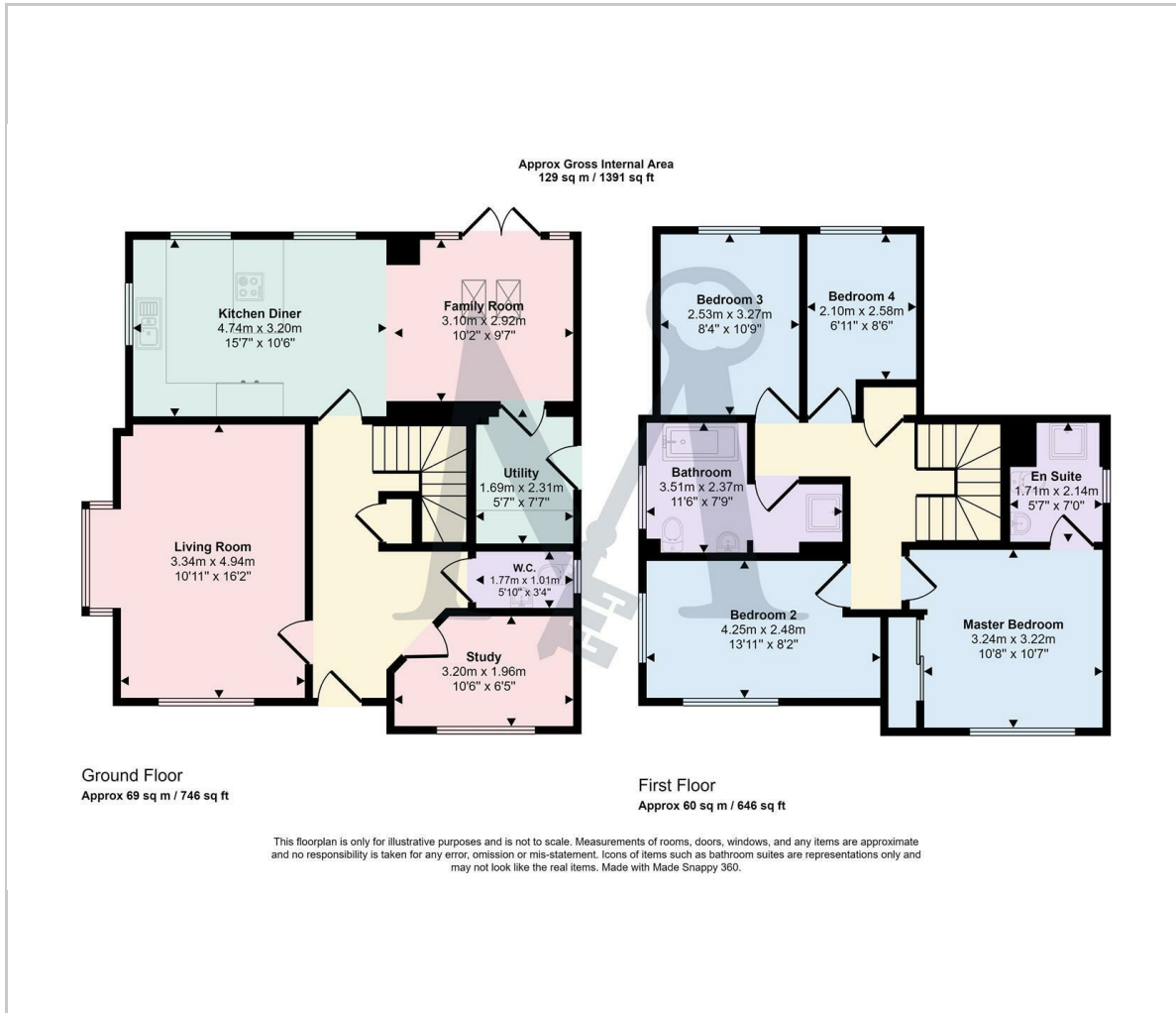
Driveway







Floor Plan



Viewing

Please contact our Maynard Estates Office on 01530 682886 if you wish to arrange a viewing appointment for this property or require further information.

These particulars, whilst believed to be accurate are set out as a general outline only for guidance and do not constitute any part of an offer or contract. Intending purchasers should not rely on them as statements of representation of fact, but must satisfy themselves by inspection or otherwise as to their accuracy. No person in this firm's employment has the authority to make or give any representation or warranty in respect of the property.

2-4 North Street, Whitwick, Coalville, Leicestershire, LE67 5HA
Tel: 01530 682886 Email: sales@maynardestates.co.uk maynardestates.co.uk

Area Map



Energy Efficiency Graph

