



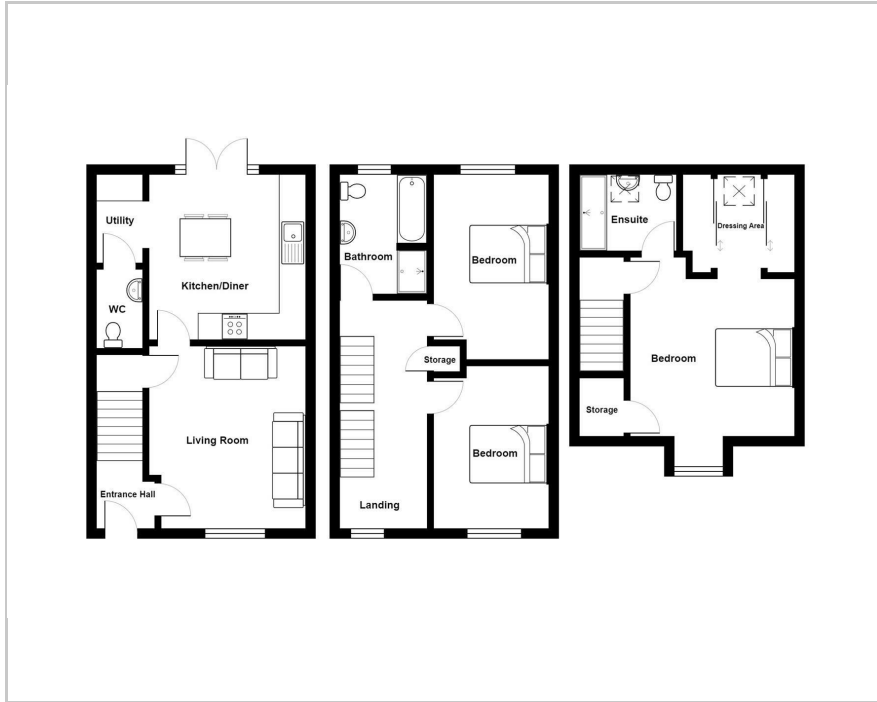
HEWLETT
HOMES



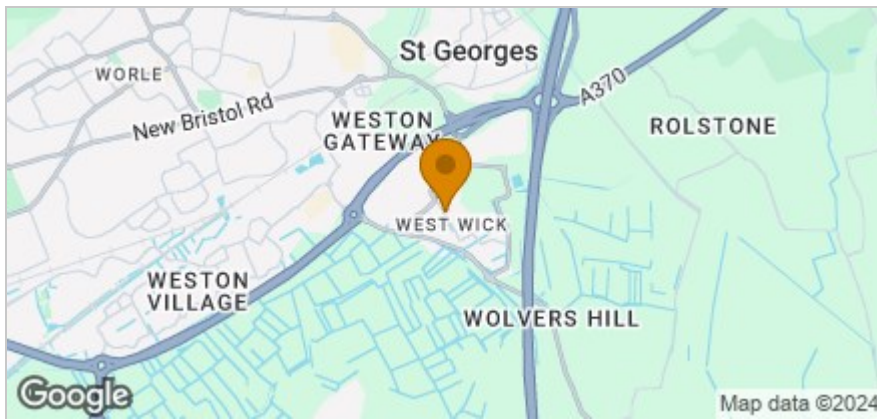
7 Oterhampton Gardens, West Wick, BS24 7PE
£335,000



Floor Plan



Area Map



Accommodation

- Spacious Townhouse
- Three Double Bedrooms
- Ensuite to Master
- Utility Room
- Off-Road Parking
- Landscaped Rear Garden
- Still Within NHBC Warranty
- Popular Location

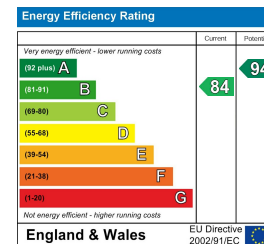


Viewing

Please contact us on 01934 900714 if you wish to arrange a viewing appointment for this property or require further information.



Energy Efficiency Graph



These particulars, whilst believed to be accurate are set out as a general outline only for guidance and do not constitute any part of an offer or contract. Intending purchasers should not rely on them as statements of representation of fact, but must satisfy themselves by inspection or otherwise as to their accuracy. No person in this firm's employment has the authority to make or give any representation or warranty in respect of the property.