

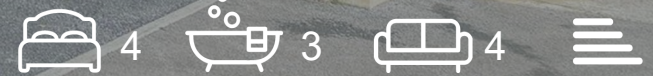


HEWLETT
HOMES

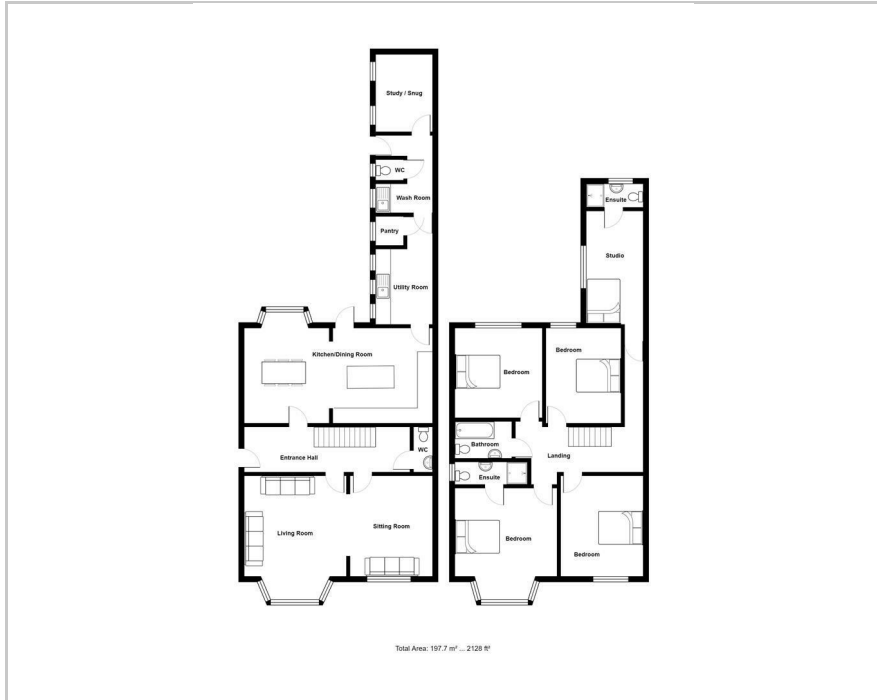


19 Charlton Road, Weston-Super-Mare, BS23 4HB

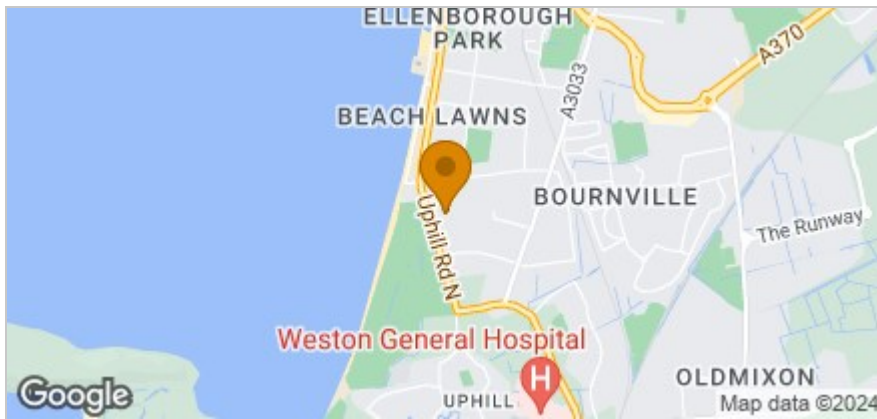
£595,000



Floor Plan



Area Map



Accommodation

- Fully Renovated Throughout
- Five Bedrooms
- Two Ensuities and Family Bathroom
- Two Sitting Rooms and Separate Office
- Large Kitchen/Diner
- Parking for Two Vehicles
- No Onward Chain
- Ready to Move Into

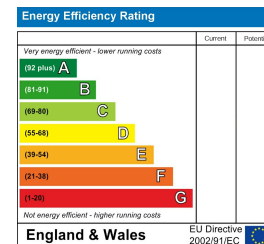


Viewing

Please contact us on 01934 900714 if you wish to arrange a viewing appointment for this property or require further information.



Energy Efficiency Graph



These particulars, whilst believed to be accurate are set out as a general outline only for guidance and do not constitute any part of an offer or contract. Intending purchasers should not rely on them as statements of representation of fact, but must satisfy themselves by inspection or otherwise as to their accuracy. No person in this firm's employment has the authority to make or give any representation or warranty in respect of the property.