

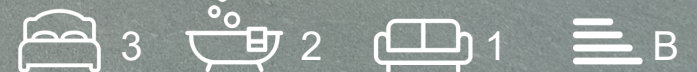


HEWLETT
HOMES

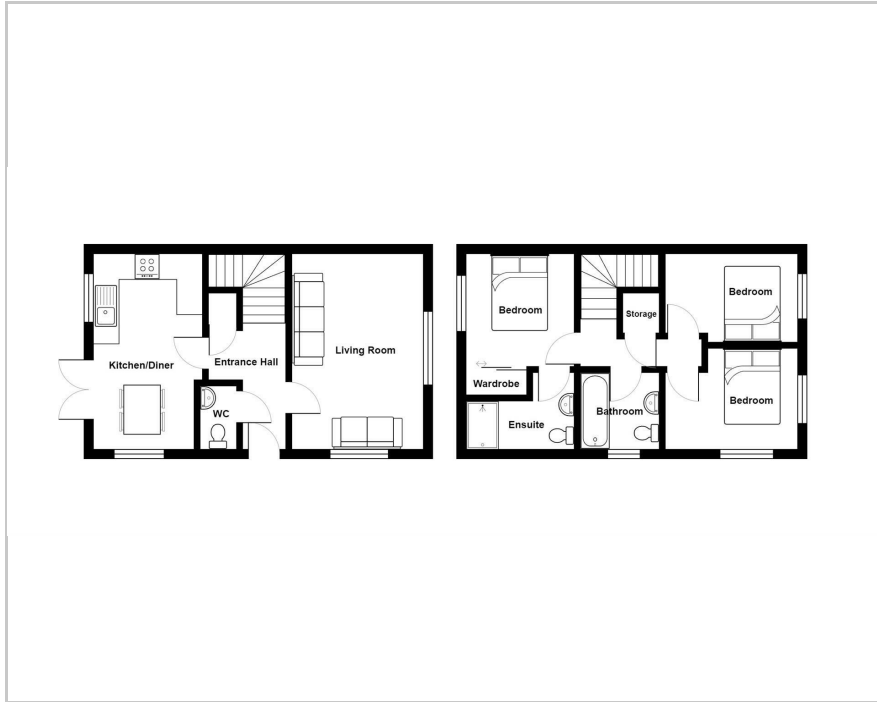


113 Moorhen Road, Bristol, BS49 4FU

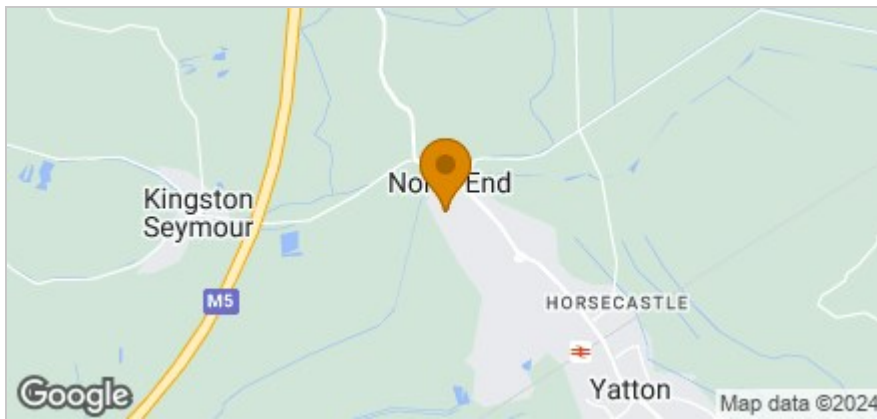
Offers in excess of £350,000



Floor Plan



Area Map



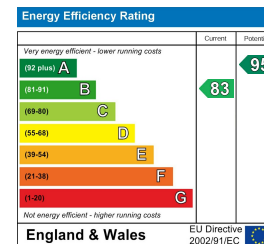
Accommodation

- Three Bedroom Home
- South Facing Garden
- Parking for At Least Two Vehicles
- Close to Local Amenities With Good Transport Links
- Beautifully Presented
- Large Single Garage and Private Driveway
- Popular Chestnut Park Development
- Still Under Remainder of NHBC Warranty

Viewing

Please contact us on 01934 900714 if you wish to arrange a viewing appointment for this property or require further information.

Energy Efficiency Graph



These particulars, whilst believed to be accurate are set out as a general outline only for guidance and do not constitute any part of an offer or contract. Intending purchasers should not rely on them as statements of representation of fact, but must satisfy themselves by inspection or otherwise as to their accuracy. No person in this firm's employment has the authority to make or give any representation or warranty in respect of the property.