



22 Warwick Avenue, Coventry – CV5 6DG
£465,000

Williams
BIRCH



22 Warwick Avenue

Coventry, Coventry

Highly sought-after 3-bed detached bungalow near bustling High Street. Family bathroom, spacious lounge/diner, tranquil rear garden and parking. Cosy home in need of modernisation. Ideal canvas for personal touch. Gas central heating, double glazing. Fantastic opportunity for customisation. Schedule a viewing today! Council Tax band: E

Tenure: Freehold

EPC Energy Efficiency Rating: D

EPC Environmental Impact Rating: E

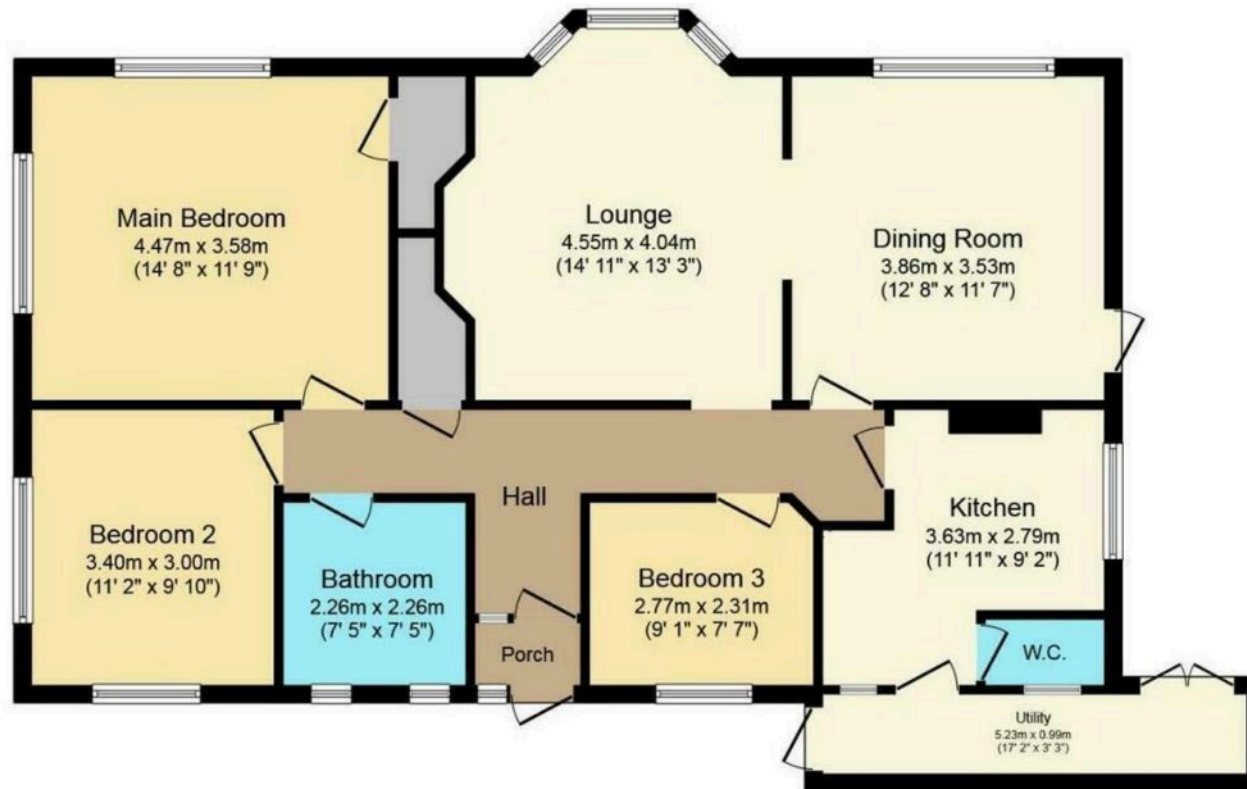
- Wonderful Detached Bungalow
- Set In A Highly Desirable Location Just A Short Walk To The Ever Popular High Street
- 3 Bedrooms
- Family Bathroom & WC
- Lounge / Diner
- Fitted Kitchen
- Drive
- Delightful Rear Garden
- Gas Central Heating - Double Glazing
- In Need Of Modernisation





sales@williamsandbinch.co.uk

02476 011400



Floor Plan

Total floor area 105.8 sq.m. (1,139 sq.ft.) approx

This Floor Plan is for illustration purposes only and may not be representative of the property. The position and size of doors, windows and other features are approximate. Unauthorized reproduction prohibited. © PropertyBOX