



26 Berkeley Road North, Coventry

Offers in Region of £375,000



26 Berkeley Road North

Coventry, Coventry

Stunning mid-terraced house w/ 3 double bedrooms, cosy wood burner, open plan kitchen/diner, LVT flooring, gardens, near High St. Character, elegance, and outdoor sanctuary make it a perfect family home. View now!

Council Tax band: C

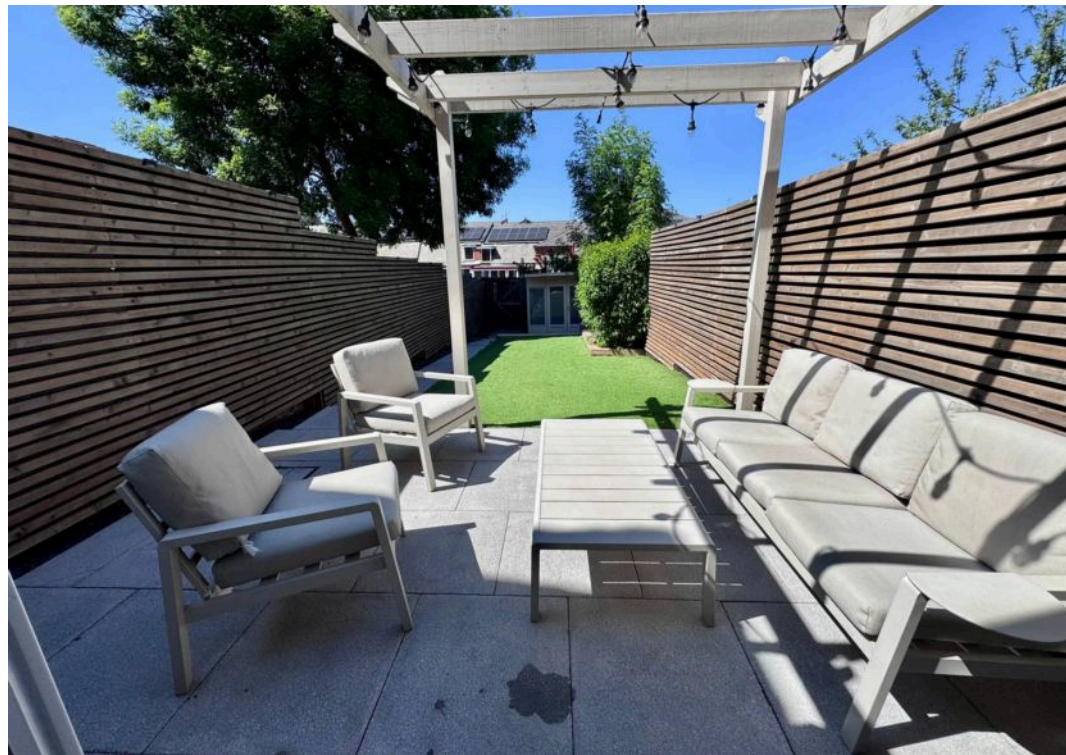
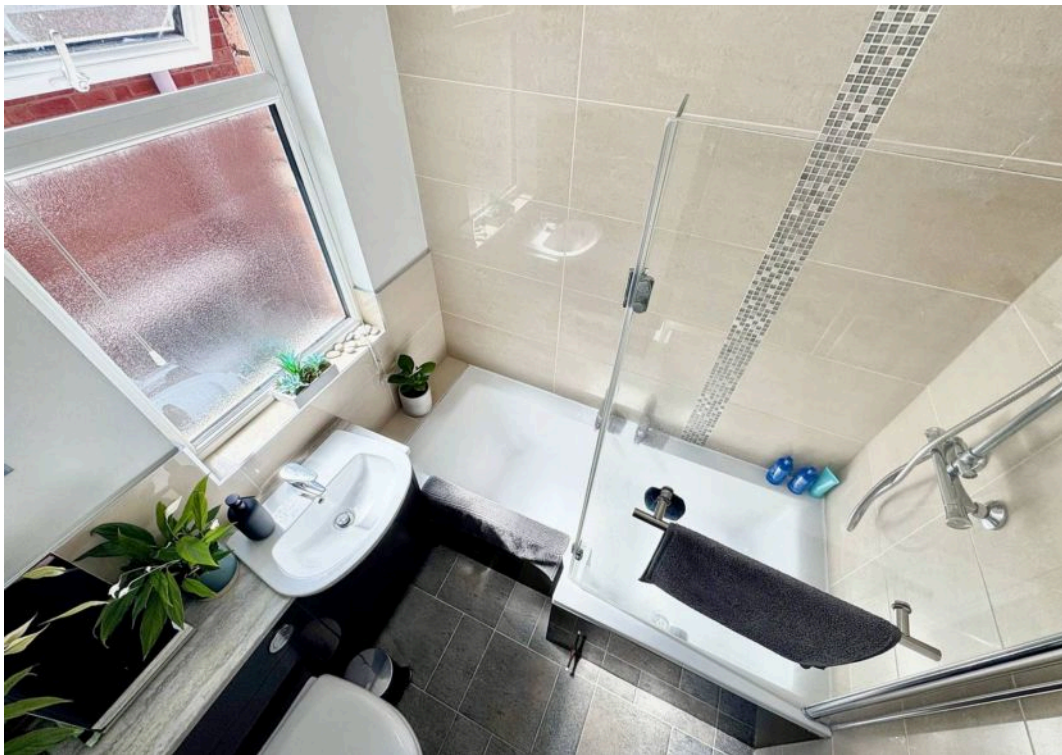
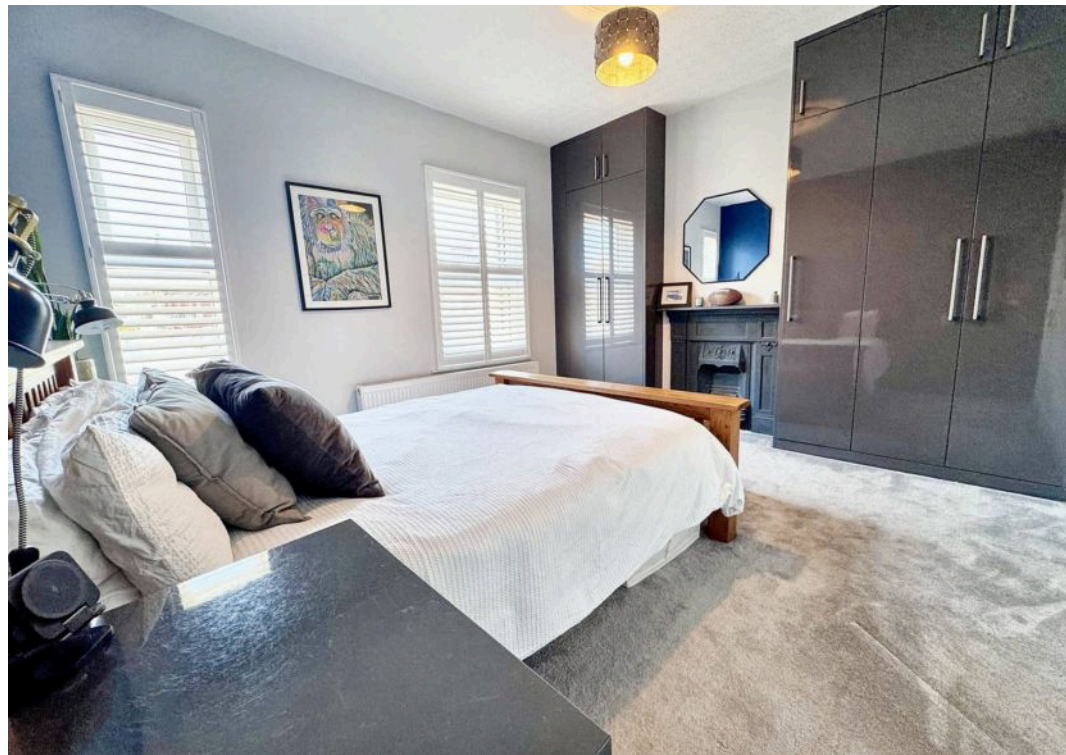
Tenure: Freehold

EPC Energy Efficiency Rating: D

EPC Environmental Impact Rating: E

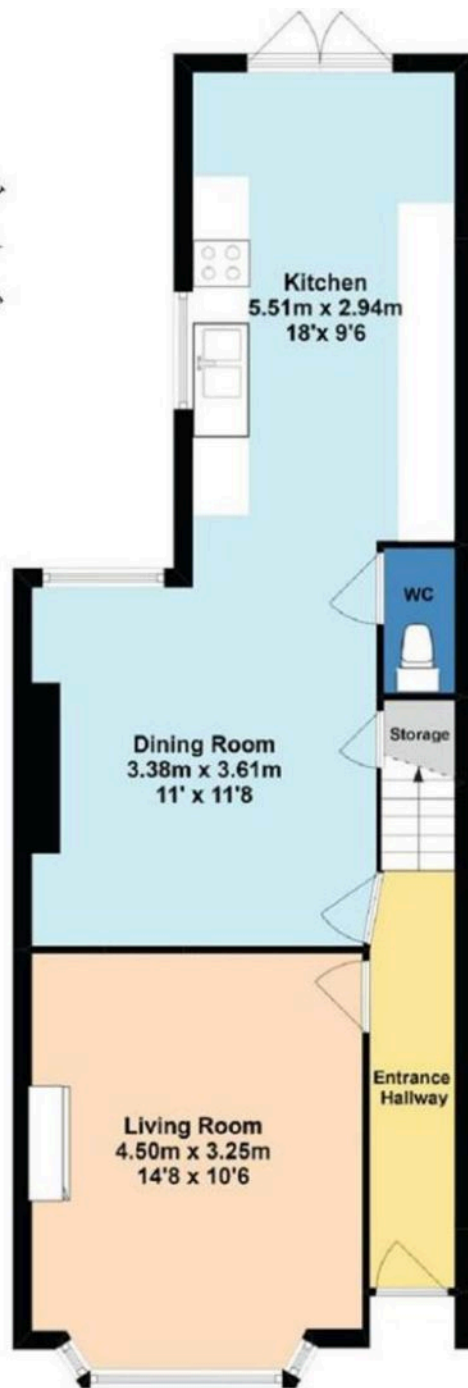
- Stunning Traditional Bayed Home
- Just A 2 Minute Walk To The Ever Poplar High St
- 3 Double Bedrooms
- Lovely Lounge With Wood Burner
- Outstanding Open plan kitchen/diner with French doors
- Premium LVT flooring throughout the whole of the ground floor
- Downstairs W/C
- Beautiful Bathroom
- Original feature fireplaces & features
- Low maintenance beautiful gardens





sales@williamsandbinch.co.uk

02476 011400



TOTAL FLOOR AREA 94.4 sq m / 1016.1 sq ft

DISCLAIMER - Floor plans shown are for general guidance only. Whilst every attempt has been made to ensure that the floorplan measurements are as accurate as possible, they are for illustrative purposes only.