



108 Westwood Road, Coventry

Offers in Region of **£210,000**



108 Westwood Road

Coventry, Coventry

Charming 3-bed end of terrace house in prime location. Lounge, dining room, fully-fitted kitchen, tranquil bathroom. Front and back gardens, gas central heating, double glazing. No chain! EPC rating TBC.

Council Tax band: B

Tenure: Freehold

EPC Energy Efficiency Rating: D

EPC Environmental Impact Rating: E

- End Of Terrace Home
- Set Just A 3 Minute Walk To The Ever Popular High Street
- Lounge
- Dining Room
- Bathroom
- Gardens To Front And Rear
- Gas Central Heating - Double Glazing
- No chain
- Superb Investment Or First Time Buy
- EPC C





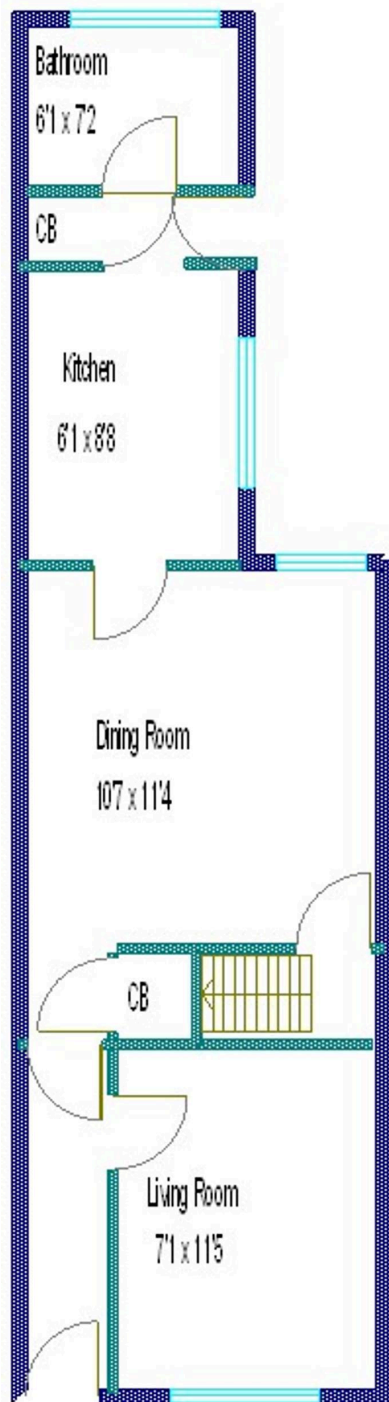
65 Earlsdon Street

Earlsdon

Coventry

CV5 6EL

Ground Floor



First Floor

