



5 Finham Grove, Coventry

Offers in Region of £525,000



5 Finham Grove

Coventry, Coventry

Prime 4-bed detached home in a sought-after area. Stylish design, spacious lounge/diner, chef's kitchen, bright conservatory, 4 bedrooms, ample parking, large garden, peaceful cul-de-sac. Perfect for family living.

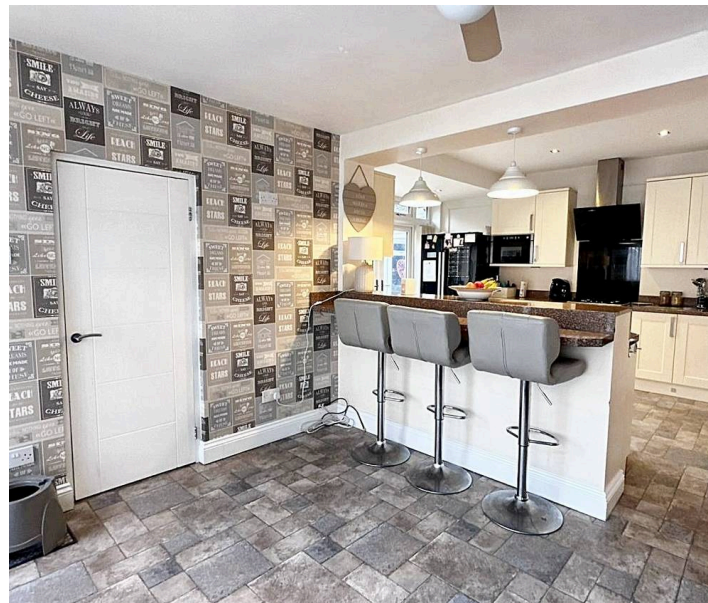
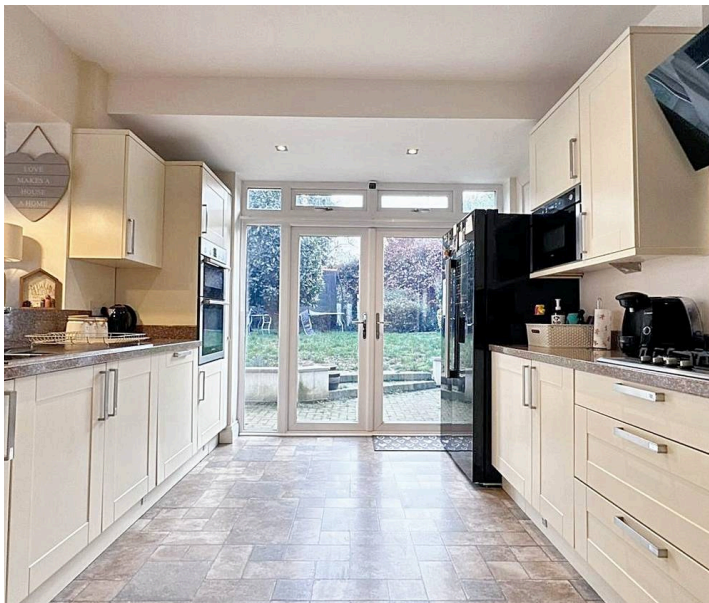
Council Tax band: E

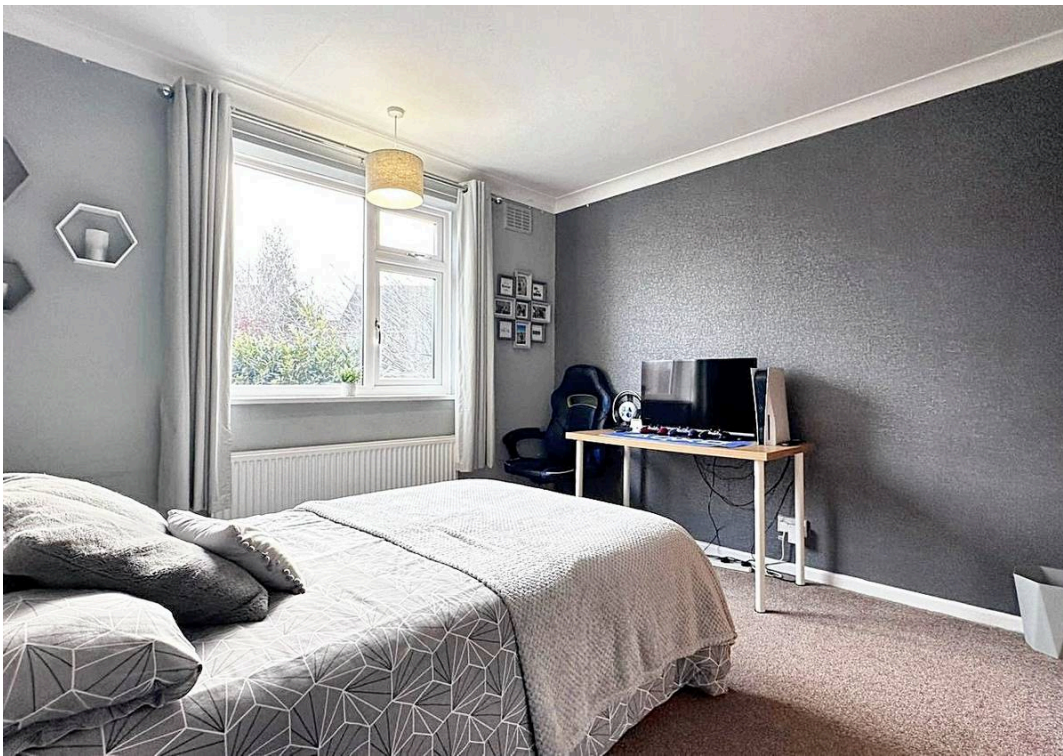
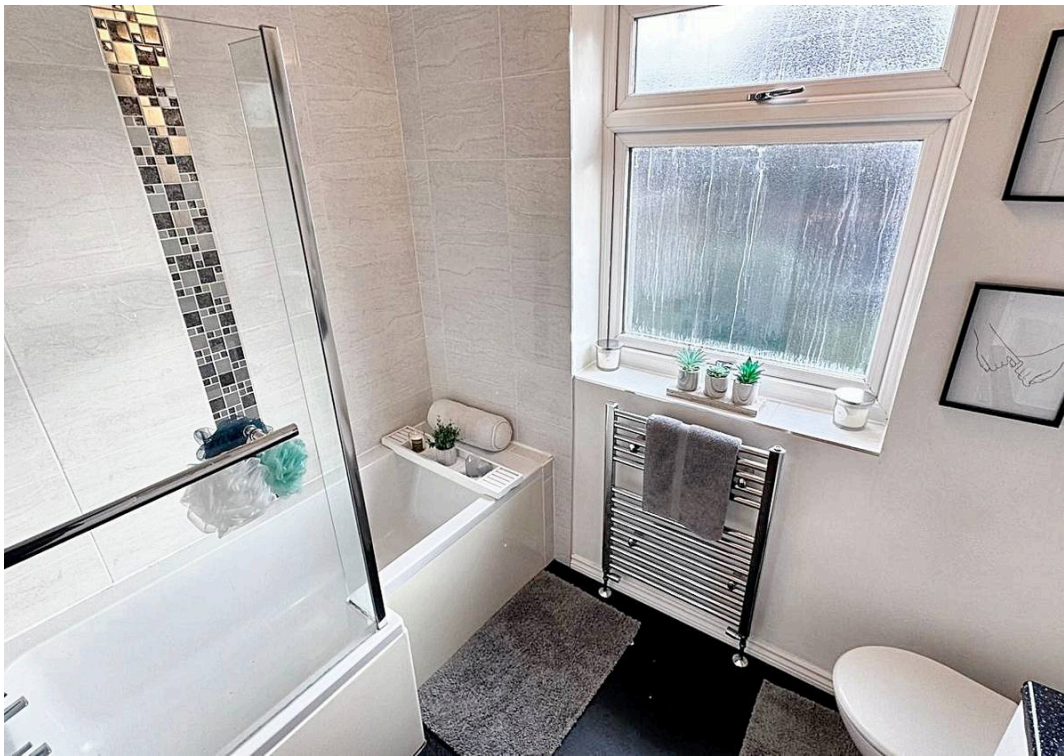
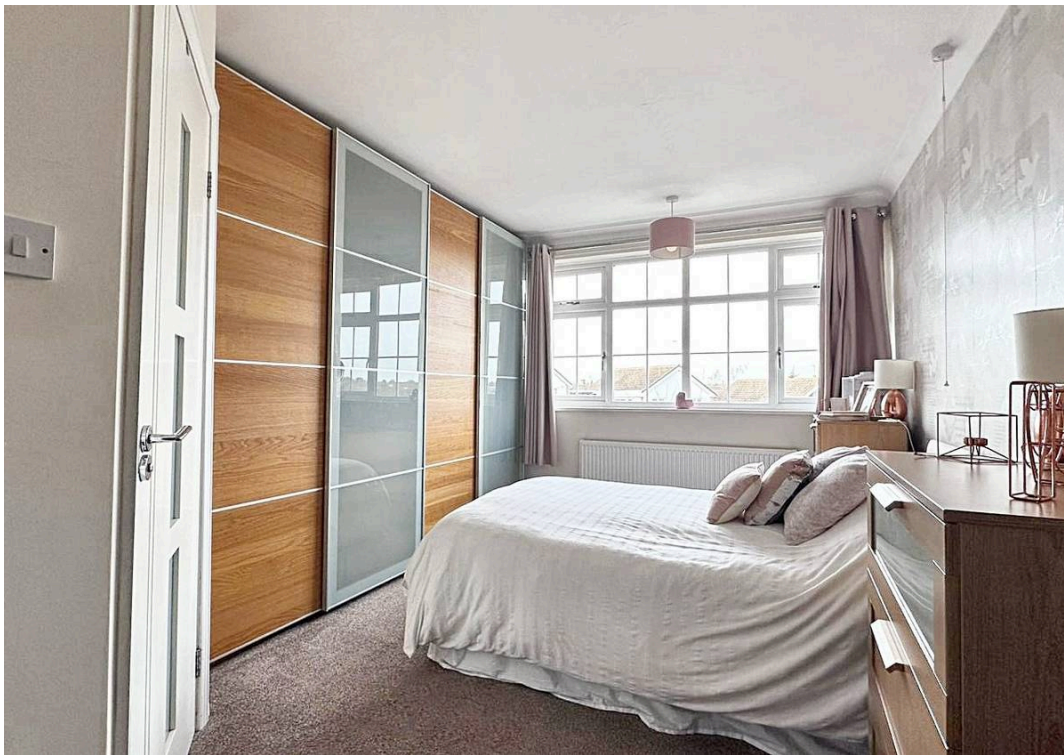
Tenure: Freehold

EPC Energy Efficiency Rating: D

EPC Environmental Impact Rating: D

- Superb Detached Family Home
- Quiet Cul De Sac Location
- Finham Park And Stivichall Catchment
- 4 Bedrooms
- Bathroom - WC - En-Suite
- Lounge / Diner With Beautiful Parquet Flooring
- Superb Kitchen / Diner
- Bright & Airy Conservatory
- Drive For Multiple Vehicle's & Superb Rear Garden
- EPC D & No Chain





sales@williamsandbinch.co.uk

02476011400



Location
Finham Grove, Finham

Details
3/4 bedrooms
1 bathroom, 1 enSuite & 1 w/c



Disclaimer
Although every care has been taken, measurements are approximate & no responsibility is taken for error.

Plan is for illustrative purposes only.

