



Flat 12, Bishopsgate House, 21 Aldbourne Road

In Excess of £185,000



Flat 12

Bishopsgate House, Coventry

Modern 2 bed apartment with canal views & high ceilings. Stylish kitchen, parking, Lift and superb local amenities, Balancing urban living with outdoor tranquillity. EPC C. View Now! £1050 rent.

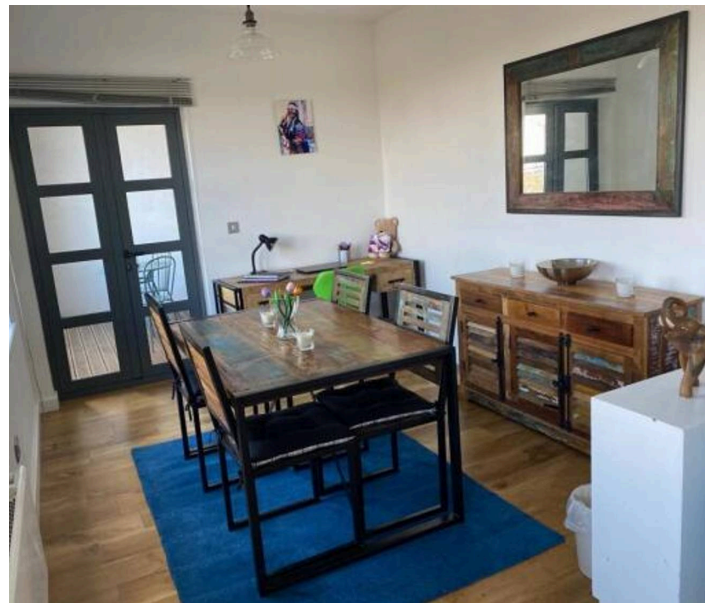
Council Tax band: B

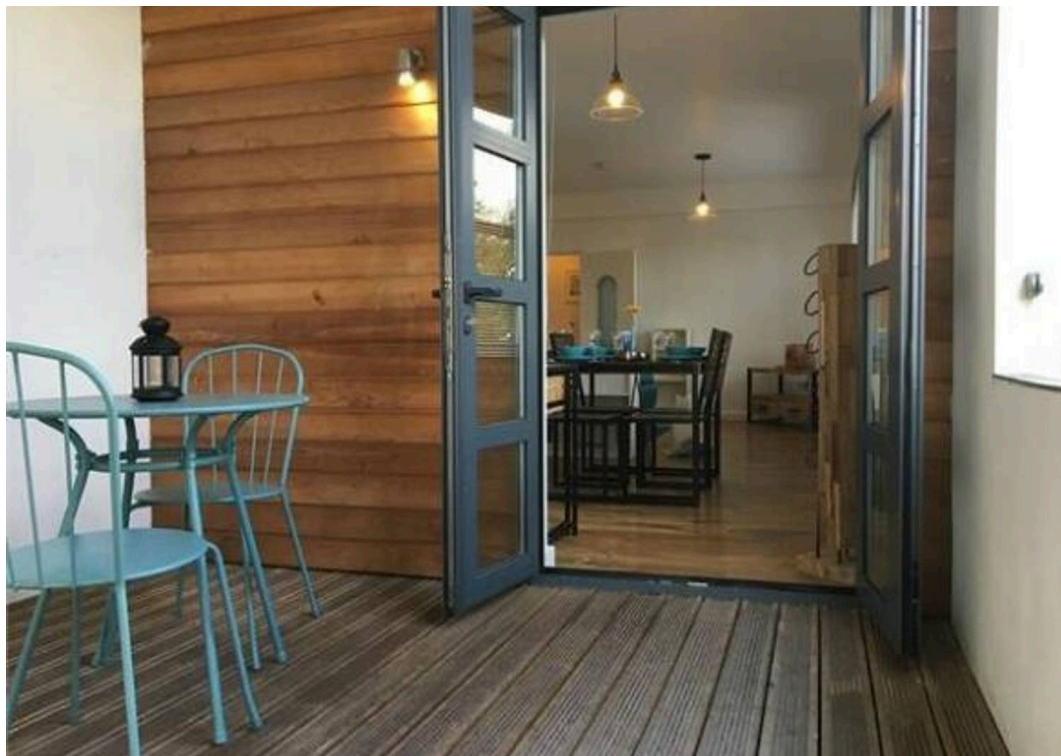
Tenure: Leasehold

EPC Energy Efficiency Rating: C

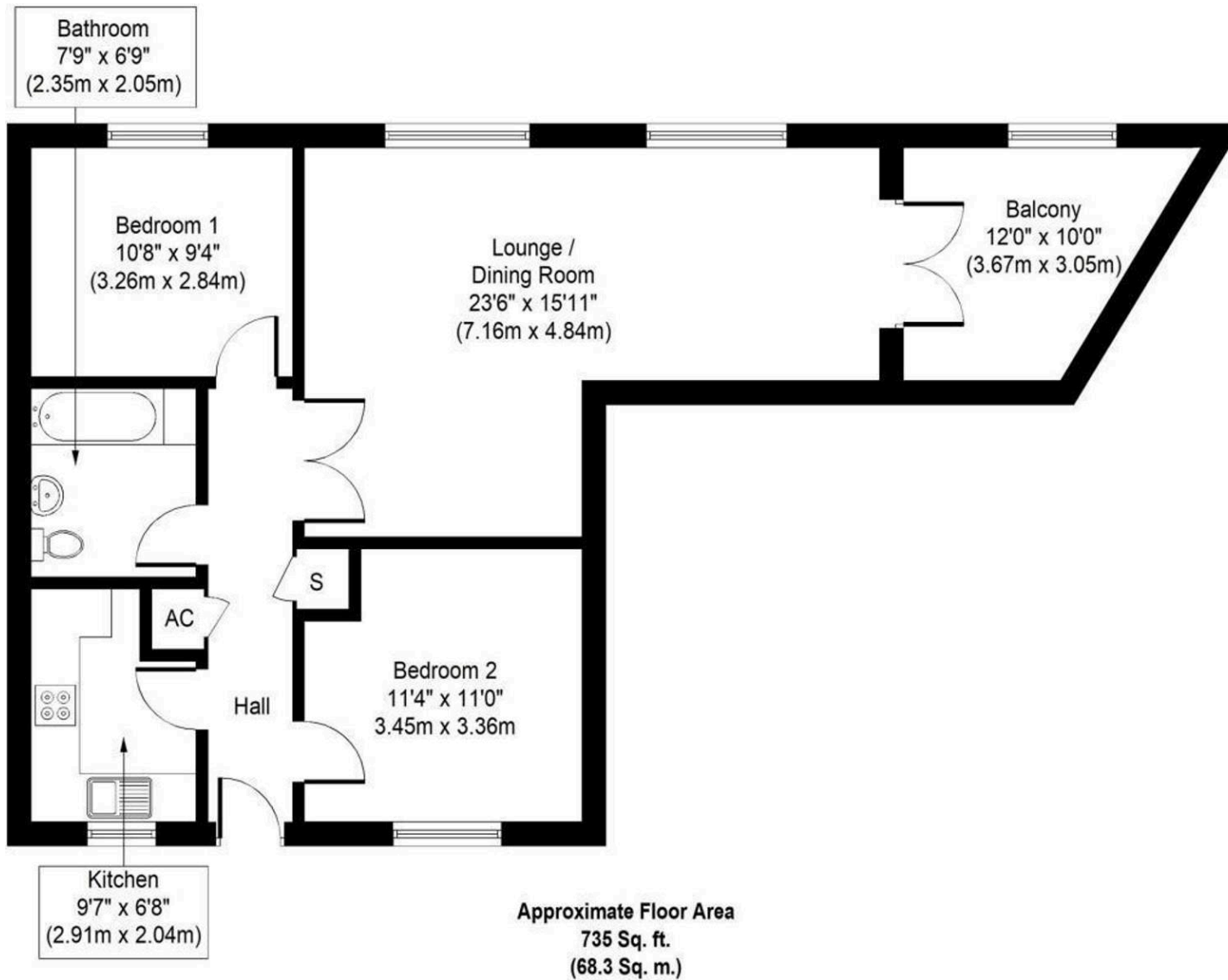
EPC Environmental Impact Rating: C

- Gorgeous Larger Than Average Apartment
- Corner Apartment Plot
- 2 Double Bedrooms
- Modern Family Bathroom
- Lounge / Diner
- Enclosed Balcony With Canal Views
- Modern Fitted Kitchen
- Allocated Secure Parking
- Superb Design And Features With High Ceilings, Ship Style Doors And Large Windows.
- Electric Storage Heating - Double Glazing - EPC C





You can include any text here. The text can be modified upon generating your brochure.



Whilst every attempt has been made to ensure the accuracy of the floor plan contained here, measurements of doors, windows, rooms and any other items are approximate and no responsibility is taken for any error, omission, or mis-statement. This plan is for illustrative purposes only and should be used as such by any prospective purchaser or tenant. The services, systems and appliances shown have not been tested and no guarantee as to their operability or efficiency can be given.
Copyright V360 Ltd 2019 | www.houseviz.com