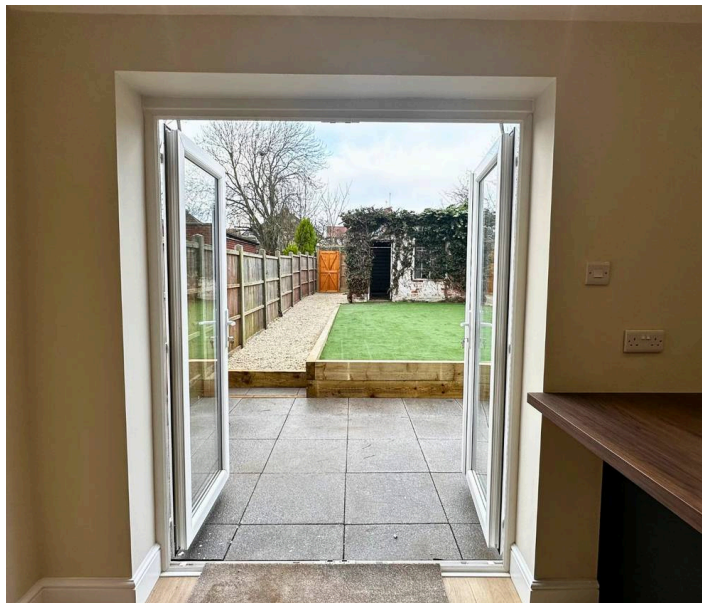




50 Gretna Road, Coventry

In Excess of £369,950





## 50 Gretna Road

Coventry, Coventry

Fabulous 4-bedroom terraced house located in a quiet cul-de-sac, Finham Park catchment area. This recently refurbished home boasts a delightful blend of modern comfort and stylish design.

Council Tax band: C

Tenure: Freehold

EPC Energy Efficiency Rating: D

EPC Environmental Impact Rating: E

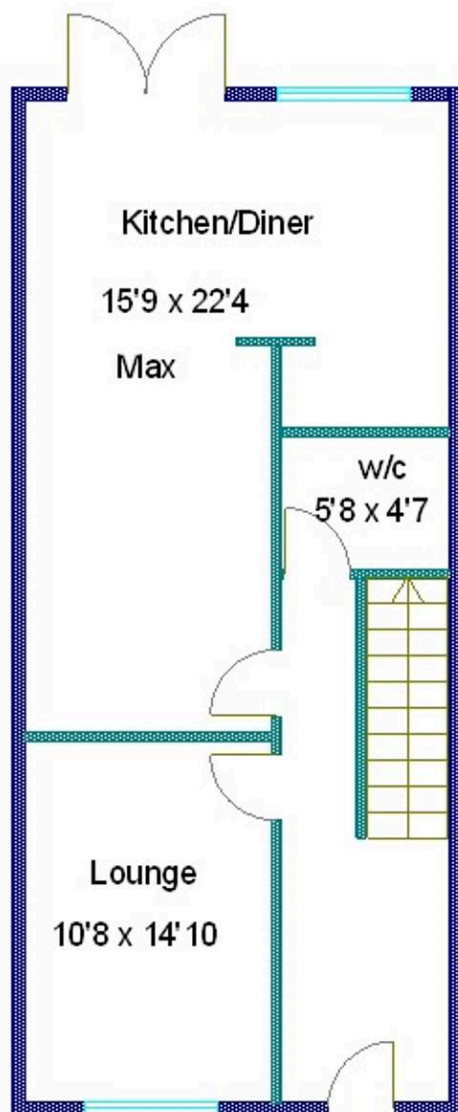
- Outstanding Refurbished Home
- Cul De Sac Location With Finham Park Catchment
- Wonderful NEW Open Plan Kitchen / Diner / Entertaining
- Lovely Lounge
- Ground Floor WC / Utility
- 4 Bedrooms - En-Suite To Master
- Family Bathroom
- New Gas Central Heating - New UPVC Double Glazing
- Drive, Garage And Pretty Rear Garden
- EPC D & No Chain



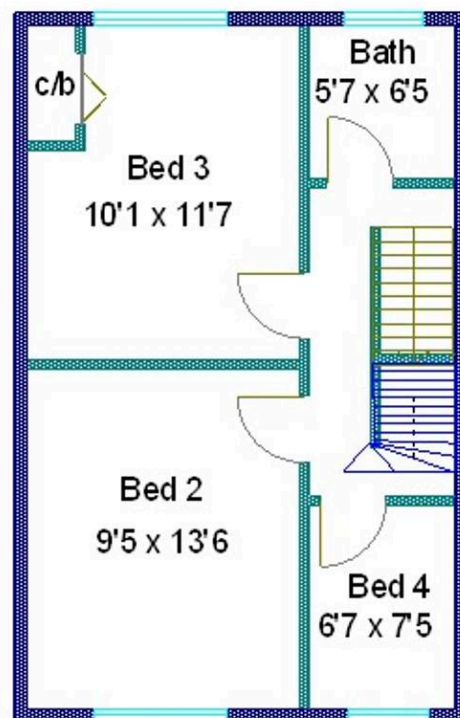




### Ground Floor



### First Floor



### Second Floor

