



Apt 9, Whittle House, 19 Warwick Street, Earlsdon, Coventry

Fixed Price £274,950



Apartment 9, Whittle House, 19 Warwick Street

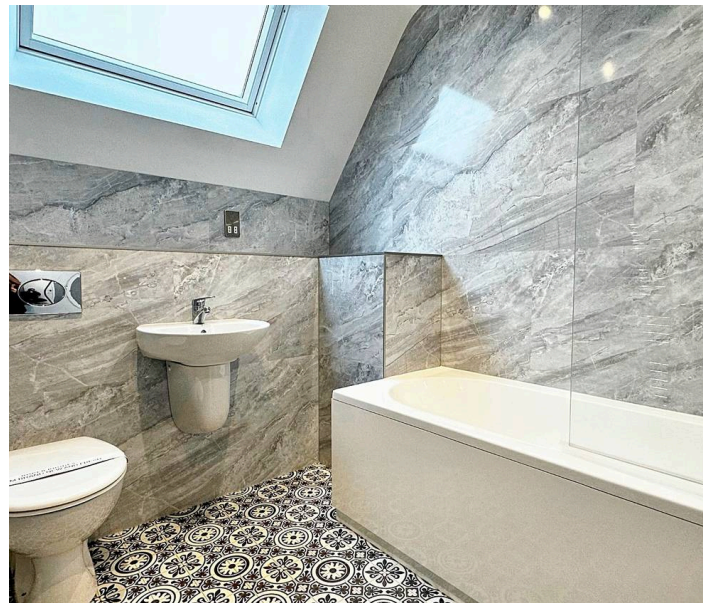
Earlsdon, Coventry

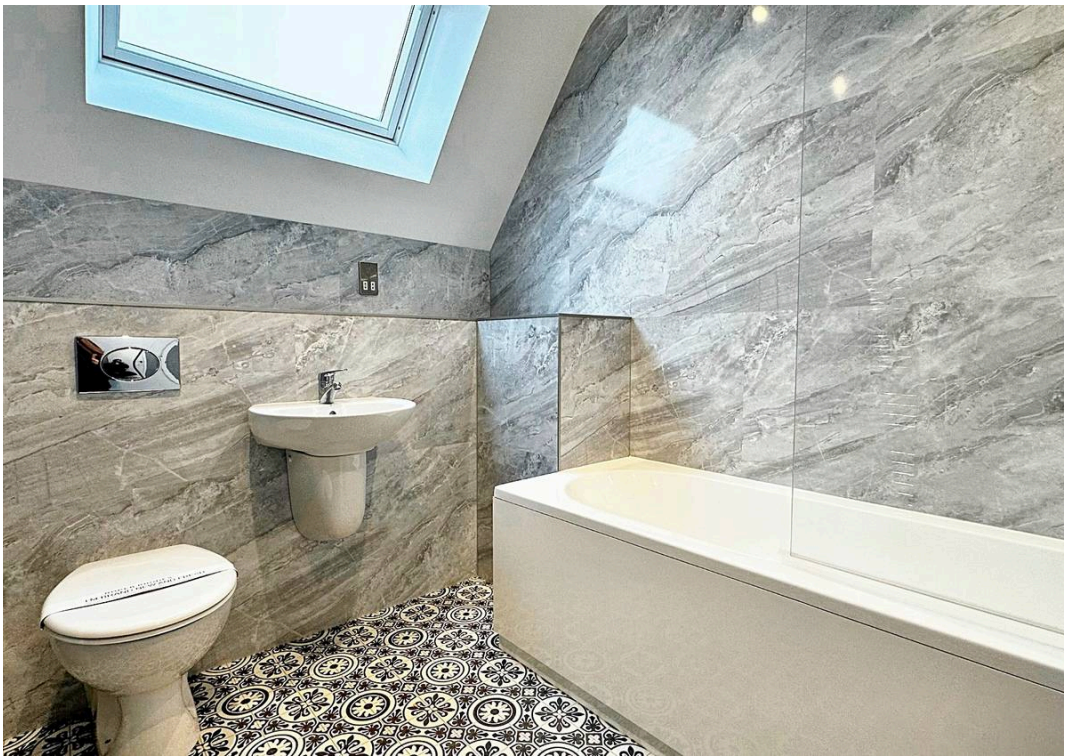
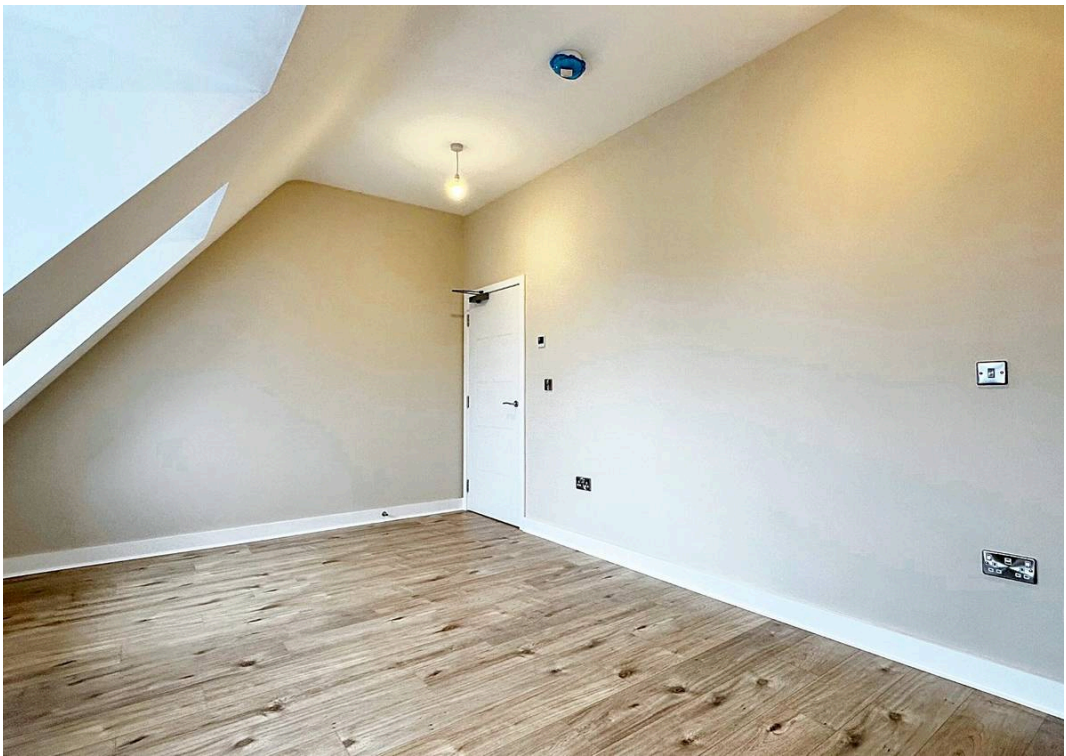
Come And Explore Earlsdon's Premier Luxury
Apartments

Council Tax band: C

Tenure: Leasehold

- Brand New Luxury Apartments
- Range Of 1 & 2 Bedroomed Apartments
- Stunning Lounge / Diner / Kitchen
- Beautiful Bathrooms & En-Suites
- Gas Central Heating - UPVC Double Glazing
- Outstanding Location
- 10 Year Warranty
- 999 Year Lease + Own A Share Of The Freehold
- Come And Explore Earlsdon's Premier Luxury Apartments





© This floor plan is for information only and should not be used as a basis for any legal proceedings. It is not intended to be a legal document and should not be used as such. It is not intended to be a legal document and should not be used as such. It is not intended to be a legal document and should not be used as such.

Apartment 09 Whittle House, 19 Warwick Street, CV5 6BQ

Kitchen/Dining/Living	4.07m x 7.66m	13'3" x 25'1"
Bed 1	4.77m x 3.47m	15'6" x 11'3"
Bed 2	2.77m x 3.47m	9'0" x 11'3"
Bathroom	2.00m x 2.35m	6'5" x 7'7"



Apartment 09 Sales Plan

211 Rev #	
Jeremy Construction Ltd	
15-25 Warwick Street, Coventry	
Apartment 11 Sales Plan	
150 of A3	June 2023
150 of A3	150 of A3
Construction	C5528