



59a Warwick Street, Coventry

In Excess of £369,950





## 59a Warwick Street

Coventry, Coventry

Stylish 3-bed townhouse near High Street. Modern kitchen/diner, cosy living room, 3 double bedrooms, en-suite, family shower room. Moed-style garden, gas heating, double glazing. Convenient and comfortable living with easy access to amenities and transport links. Council Tax band: C

Tenure: Freehold

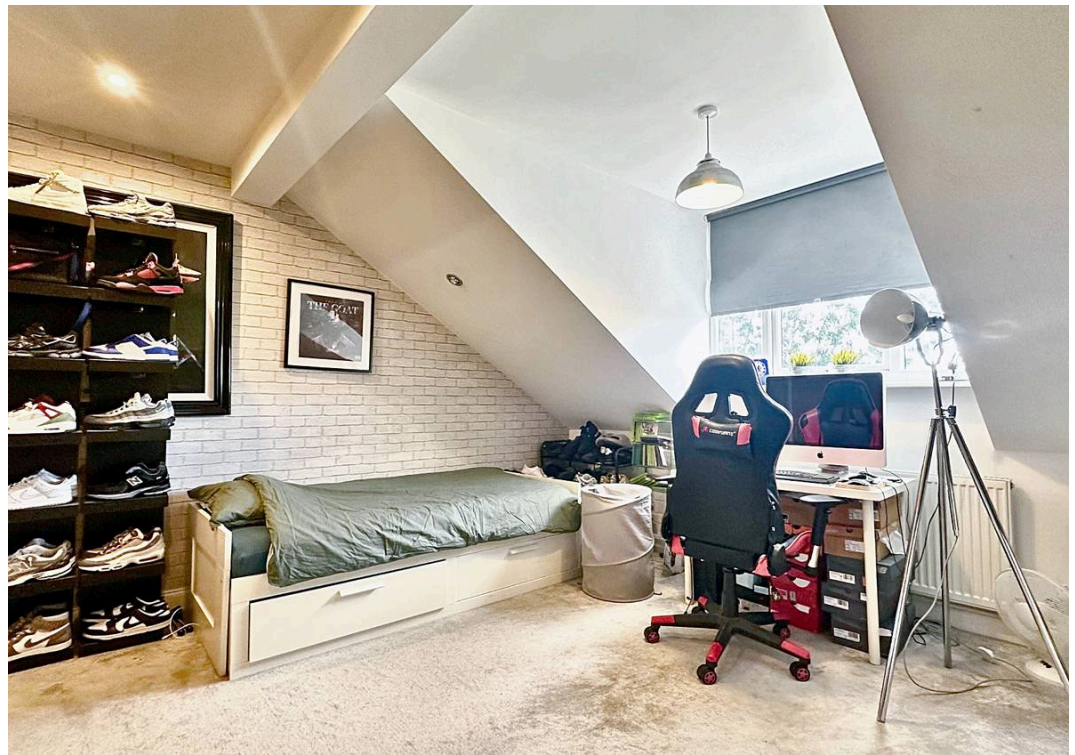
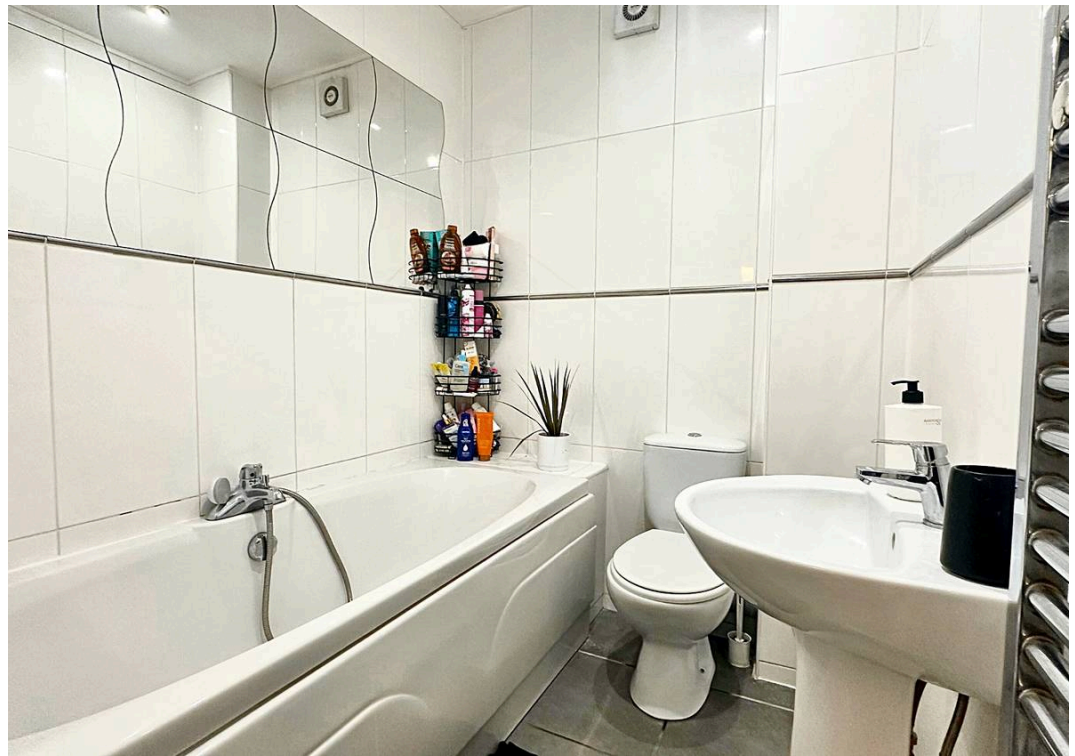
EPC Energy Efficiency Rating: C

EPC Environmental Impact Rating: C

- Stunning Modern Town House
- Built In 2006 And Set Just A 2 Minute Walk To The High Street
- Stunning Kitchen / Diner
- WC / Utility
- Beautiful Lounge
- 3 Double Bedrooms
- Master With En-Suite
- Family Shower Room
- Beautiful Mediterranean Style Garden
- Gas Central Heating - Double Glazing











**Location**  
Warwick Street, Earlsdon

**Details**  
Total Living Area: 1301 sq ft  
120.8 sq m



**Disclaimer**  
Although every care has been taken, measurements are approximate & no responsibility is taken for error.

Plan is for illustrative purposes only.

