



88 Lincroft Crescent, Coventry

Offers in Region of £249,950



88 Lincroft Crescent

Coventry, Coventry

Charming 3-bed terraced house with character & warmth in prime location. Features modern bathroom, cosy lounge, open-plan kitchen/diner, gas central heating, double glazing, drive, & delightful rear garden with garden room. Offered chain-free for immediate move-in.

Council Tax band: B

Tenure: Freehold

EPC Energy Efficiency Rating: D

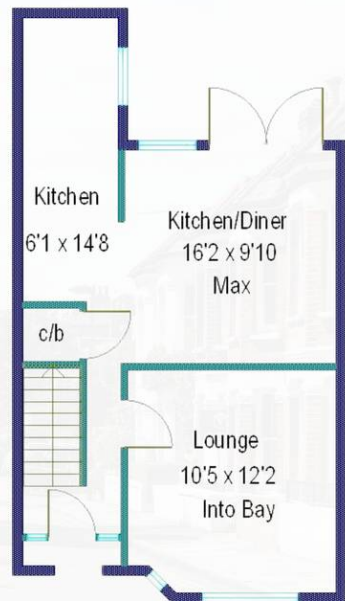
EPC Environmental Impact Rating: D

- Traditional Terraced Home
- Gorgeous Views Over Rear Allotment
- 3 Bedrooms
- Modern Bathroom
- Lounge
- Open Plan Kitchen / Diner
- Drive To Front
- Delightful Rear Garden With Garden Room / Games Room / Studio
- Gas Central Heating - Double Glazing
- No Chain

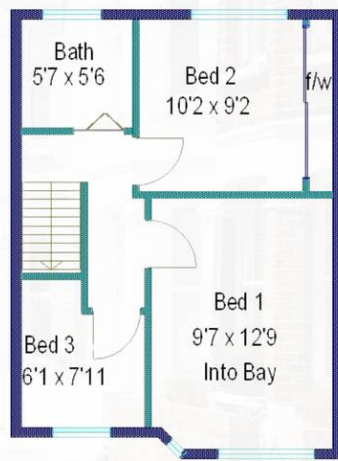




Ground Floor



First Floor



WILLIAMS & BINCH
ESTATE AGENTS

Measurements are approximate.
Not to scale.
For illustrative purposes only.