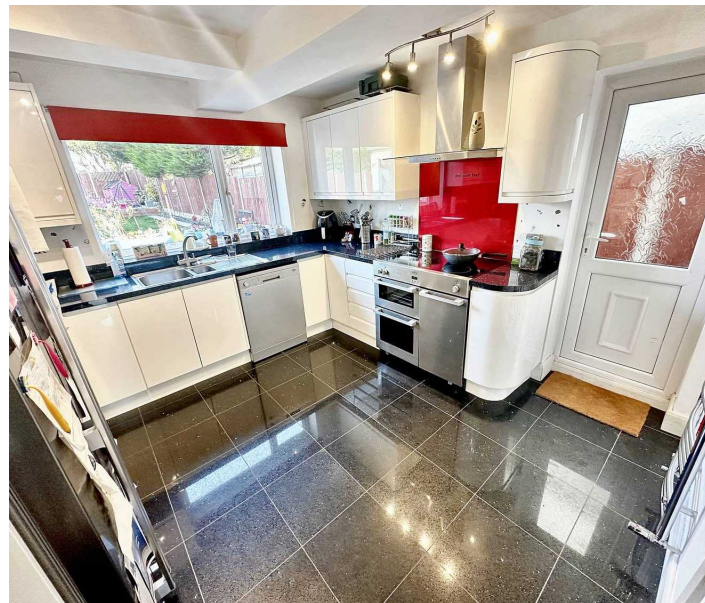




16 Elm Tree Avenue, Coventry

In Excess of **£319,950**



16 Elm Tree Avenue

Coventry, Coventry

Stunning 4-bed semi-detached house with spacious layout, stylish kitchen, conservatory, and landscaped garden. Off-road parking, solar panels, and energy-efficient features. Tranquil oasis perfect for outdoor living. Don't miss out on this no-chain opportunity!

Council Tax band: C

Tenure: Freehold

EPC Energy Efficiency Rating: C

EPC Environmental Impact Rating: D

- Larger Than Average Semi Detached Home
- 4 Bedrooms
- Family Bathroom & En-Suite
- Lounge / Diner
- Bright & Airy Conservatory
- Stunning Fitted Kitchen
- Large Drive
- Beautiful Rear Garden
- Solar Panels - Gas Central Heating - Double Glazing



