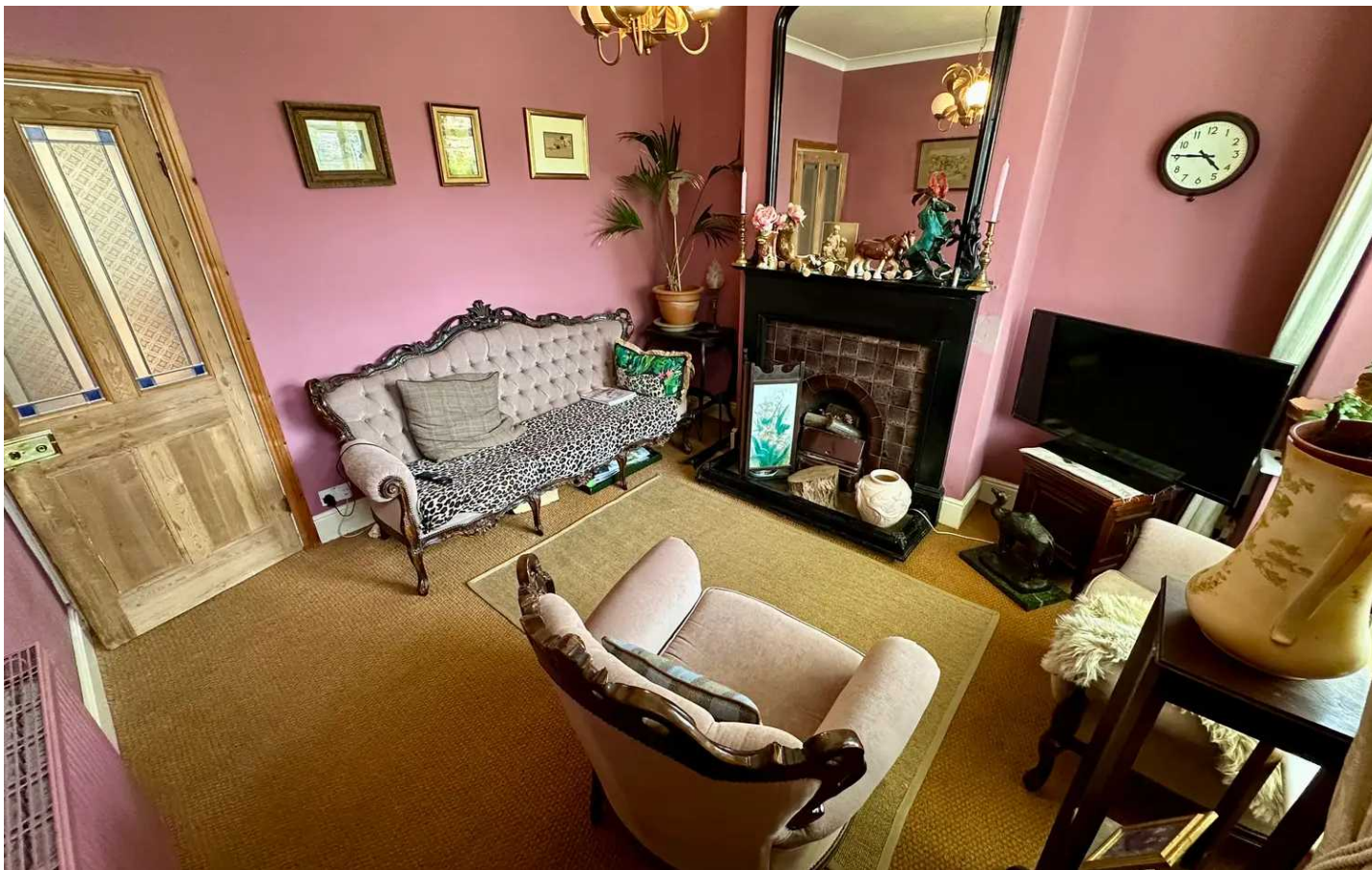




10 Osborne Road, Coventry  
£250,000



## 10 Osborne Road

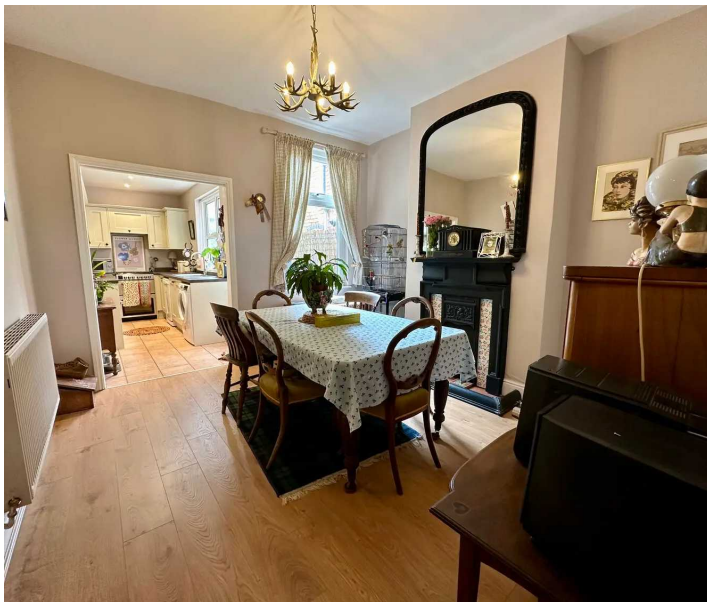
Coventry, Coventry

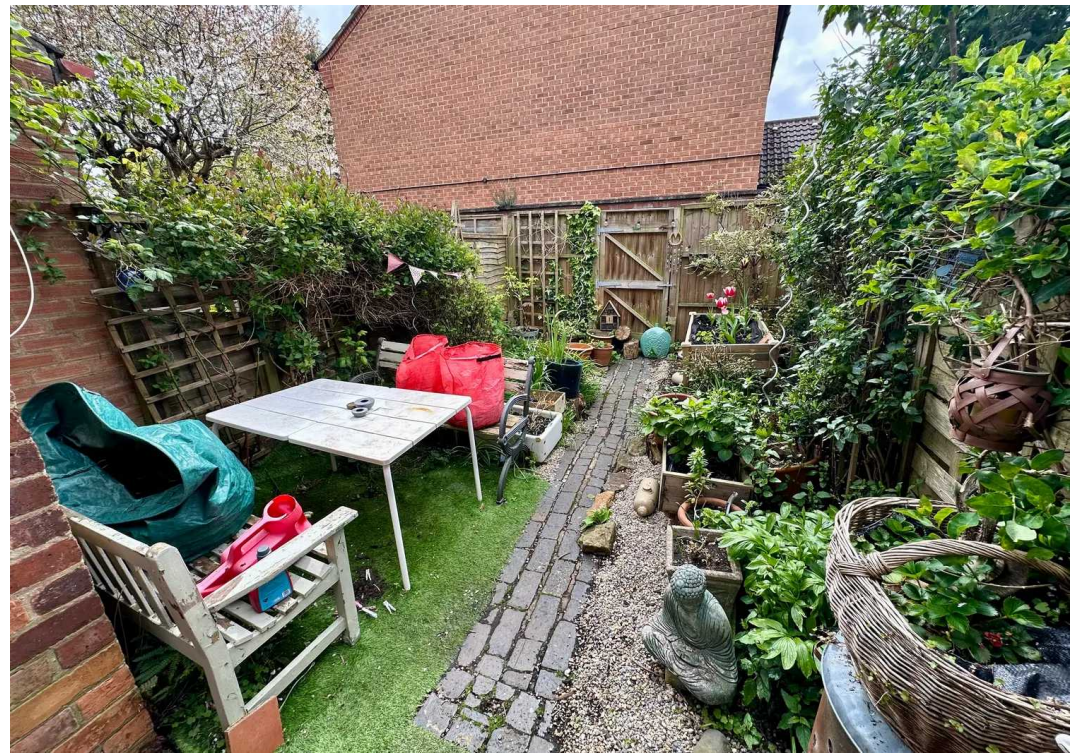
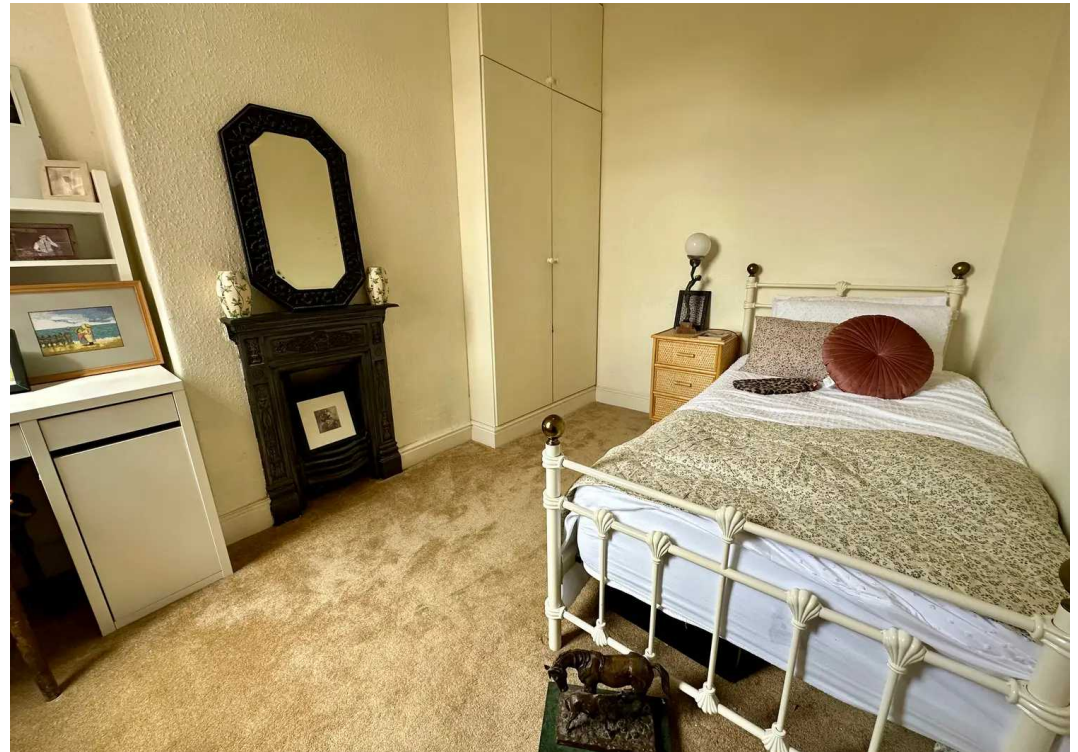
Charming 2-bed mid-terraced home near Earlsdon High St. Featuring double bedrooms, lounge with bay window, separate dining room, modern kitchen, bathroom & shower room. Original features, front & rear gardens. Close to shops, cafes & restaurants. Character-filled retreat in sought-after area.

Council Tax band: B

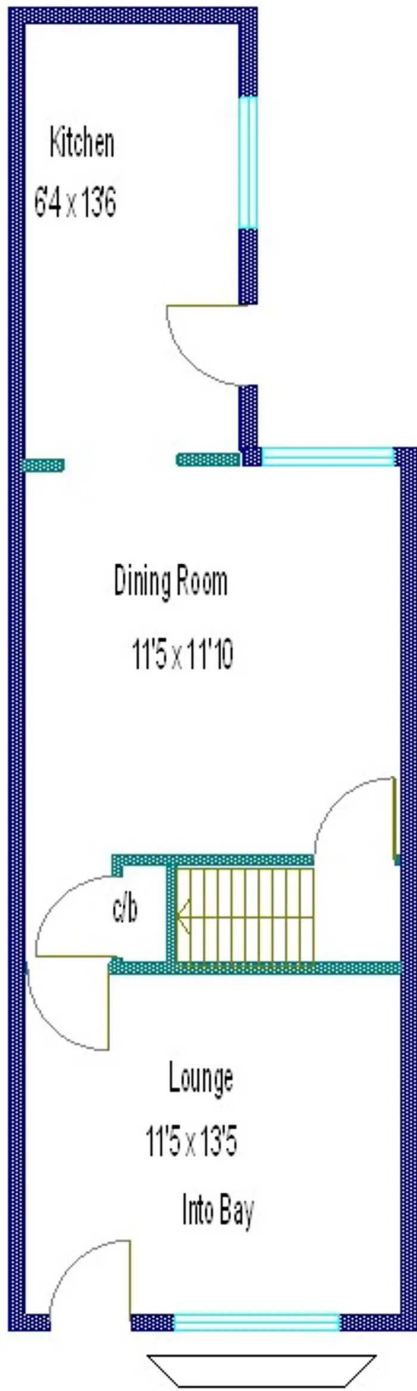
Tenure: Freehold

- Traditional Bayed Home
- Set Just Off The Ever Popular Earlsdon High Street
- 2 Double Bedrooms
- Beautiful Lounge With Bay Window
- Dining Room
- Superb Fitted Modern Kitchen
- Shower Room
- Pretty Front & Rear Gardens
- Stacked With Original Features





Ground Floor



First Floor

