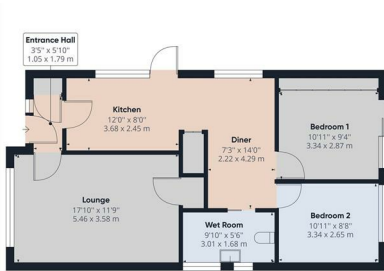




RE/MAX

PROPERTY HUB



16 Sweden Close, Harwich, CO12 4JU

Price £210,000

Nestled in a large corner plot of a quiet cul-de-sac this two bedroom detached bungalow is in need of modernisation and offers 2 double bedrooms, kitchen/diner, lounge, wet room style shower room, driveway, car port and garage, front and rear gardens as well as cavity wall insulation. Offered with no onward chain

Council Tax: C

EPC: E

Entrance Hall

With large storage cupboard and doors leading through to both kitchen and lounge

Kitchen/Diner

Fitted with a range of base and wall units, stainless steel sink and drainer, spaces for appliances, storage cupboard housing the boiler, 2 windows to side aspect and side door leading to the driveway

Lounge

With window to front aspect and door leading to the inner lobby

Bedroom One

With double glazed sliding doors to rear garden and triple fitted wardrobe

Bedroom Two

Double bedroom with window to rear aspect

Wet Room

Low level WC, wash hand basin, wall fitted shower, towel radiator and 2 windows to side aspect

Inner Lobby

Airing cupboard housing water tank and access to loft (part boarded)

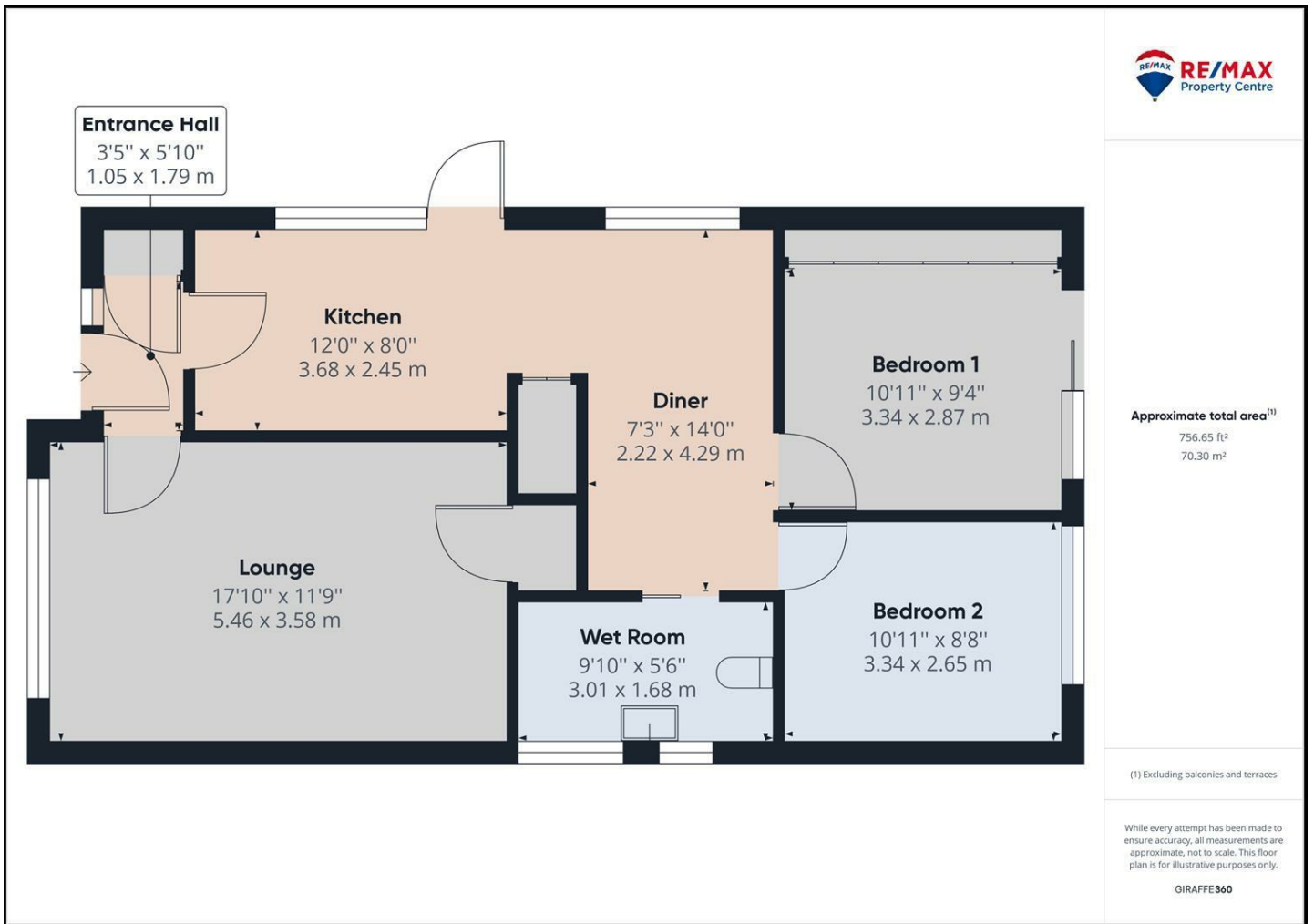
Outside Areas:

To the front of the property is mainly laid to lawn with mature shrubs, concrete driveway to the side offering off-road parking for multiple vehicles.

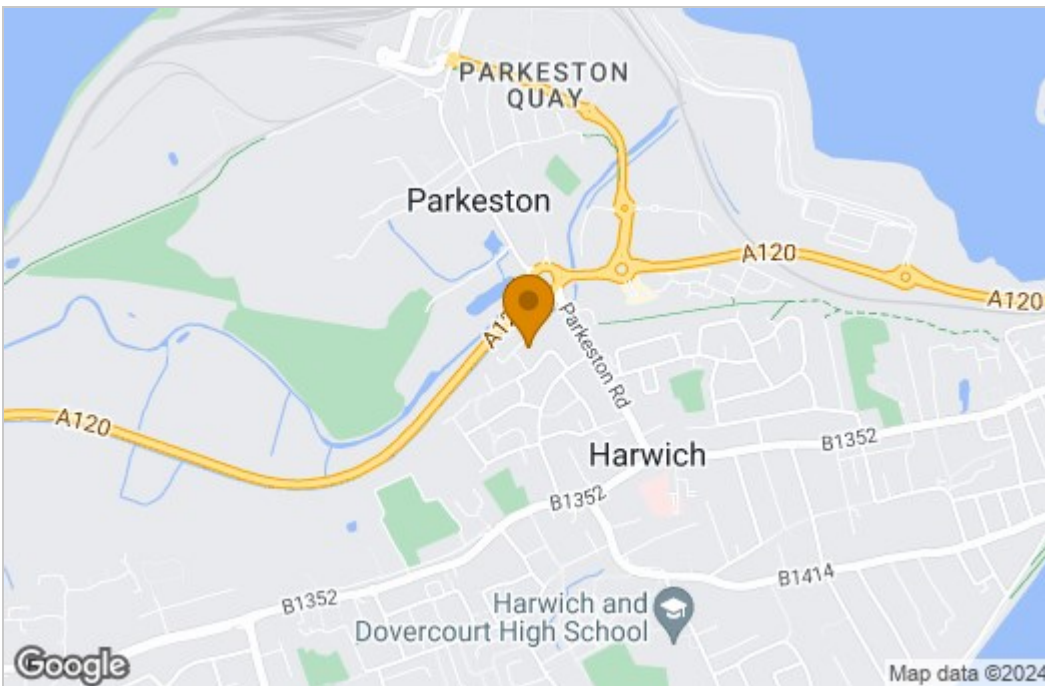
There is also a covered car port and separate garage.

At the rear of the property there is a paved patio area, brick built BBQ and a raised border with mature trees and shrubs.

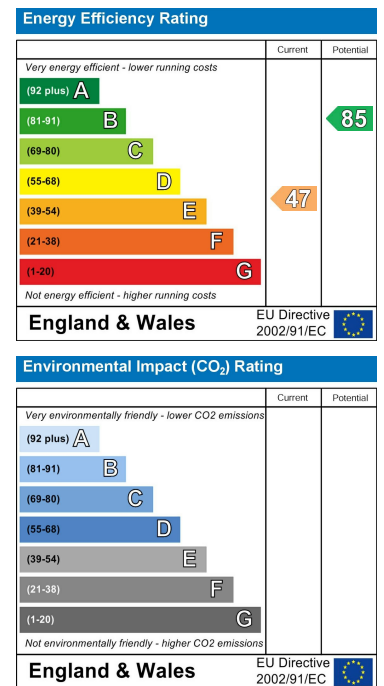
Floor Plan



Area Map



Energy Efficiency Graph



These particulars, whilst believed to be accurate are set out as a general outline only for guidance and do not constitute any part of an offer or contract. Intending purchasers should not rely on them as statements of representation of fact, but must satisfy themselves by inspection or otherwise as to their accuracy. No person in this firm's employment has the authority to make or give any representation or warranty in respect of the property.