



Hawkshead

THREE BEDROOM DETACHED HOUSE



Ashton Meadows

LANCASTER

The Hawkshead

GROUND FLOOR

Kitchen / Diner (max)
7.67m x 3.15m

Lounge (max)
3.34m x 7.67m

Study
2.23m x 2.26m

Garage / Utility
3.05m x 5.87m



FIRST FLOOR

Master Bedroom (max)
3.34m x 5.40m

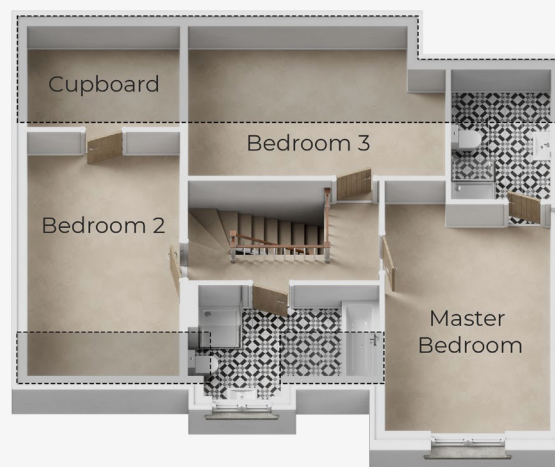
En-Suite*
2.00m x 2.76m

Bedroom 2*
3.07m x 5.04m

Cupboard*
3.07m x 2.25m

Bedroom 3* (max)
5.21m x 3.06m

Bathroom* (max)
3.80m x 2.35m



*----- Denotes sloping ceiling.

Tel. 07917 869370/015395 60605

Ashton Meadows Pathfinders Drive, Lancaster, Lancashire LA1 5FG
www.oakmerehomes.co.uk


Oakmere[®]
CREATING QUALITY HOMES

The images shown are for illustration purposes only. Whilst every care is taken to ensure accuracy of information contained in this brochure, we cannot take responsibility for any error or misdescription and we reserve the right to alter or amend designs and specifications without prior notice. The information contained herein is for guidance only and does not form part of any contract or warranty. External finishes may vary from those shown and any dimensions given are approximate and sizes may vary from those indicated. Properties may be built handed (mirror image). External materials, landscaping, garage and window positions may vary to suit the location of individual homes. Elevational treatments may vary to those shown, please speak to our New Homes Advisor for the details regarding individual plot specifications.