



## Koa, Battersea Roof Gardens, London, SW11

£4,000 pcm

- Brand new
- 12<sup>th</sup> floor
- 1 bedroom
- 1 bathroom
- Private conservatory
- Spacious dining area
- 677 sq ft
- Upper floor with great views
- Luxury residents' facilities
- Highly sought after location.
- 24-hour concierge
- Great transport links

*Brand new 1 bedroom, 1 bathroom apartment with a contemporary and fresh design within the latest phase of Battersea Power Station, one of central London's largest, most visionary regeneration projects.*

*Located on an upper floor, the private conservatory offers spectacular views of the Power Station, Canary Wharf and across London.*

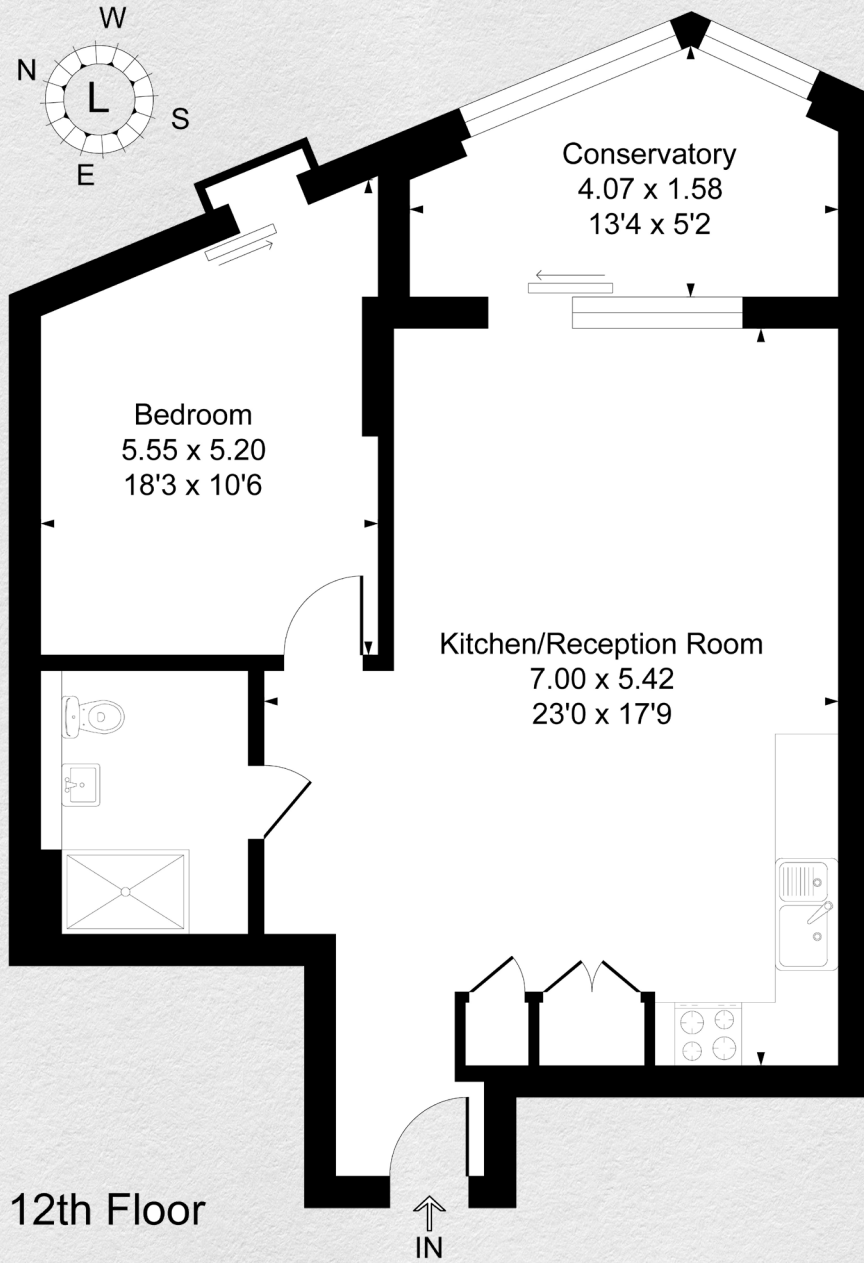
*The apartment is full of character and excitement with fresh, modernist references bringing sophistication, combined with top quality finishes and considerable natural light through the conservatory and large windows.*

*The private Sky Lounge on the 14th and 15th floors offers stunning views, a Sunset Bar, workspaces, and a gym with great views. Koa at Electric Boulevard adds vibrancy to the Battersea Power Station neighbourhood with shops, dining, entertainment, wellness centres, and an art'otel.*









12th Floor

↑  
IN

Address:

Koa, Battersea Roof Gardens, London, SW11

sq ft

bed

bath

*internal*

677

1

1

\*\* For illustration purposes only. Could not be to scale. One-London aims to ensure accuracy but is not liable for any discrepancies.