



W1 Place, Great Portland Street, London, W1W

£6,195,000

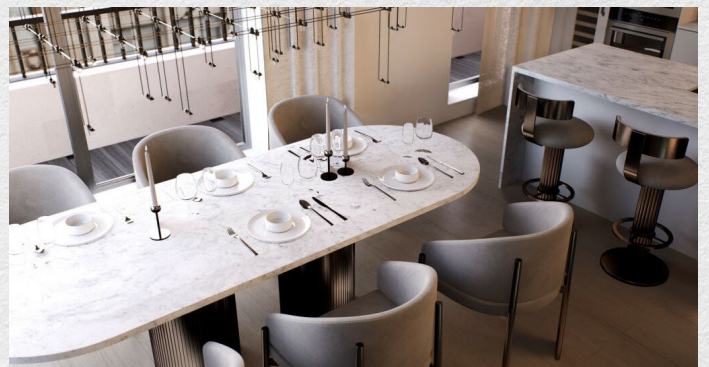
- Penthouse apartment
- 3 large bedrooms
- 3 bathrooms
- 1,602 sq ft internal area
- 500 sq ft roof terrace
- Floor to ceiling windows
- Great views across London
- Luxury residents' facilities
- Sought after location
- 24-hour concierge
- Great transport links

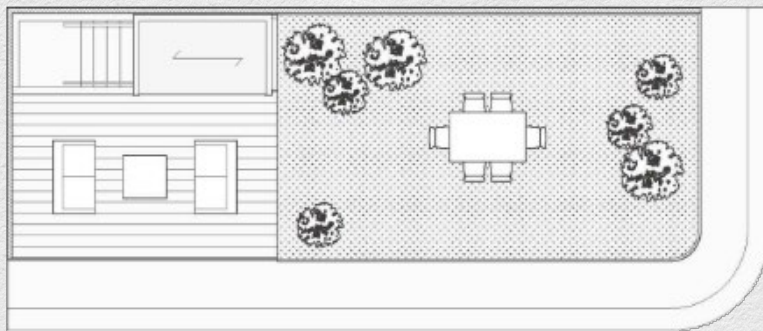
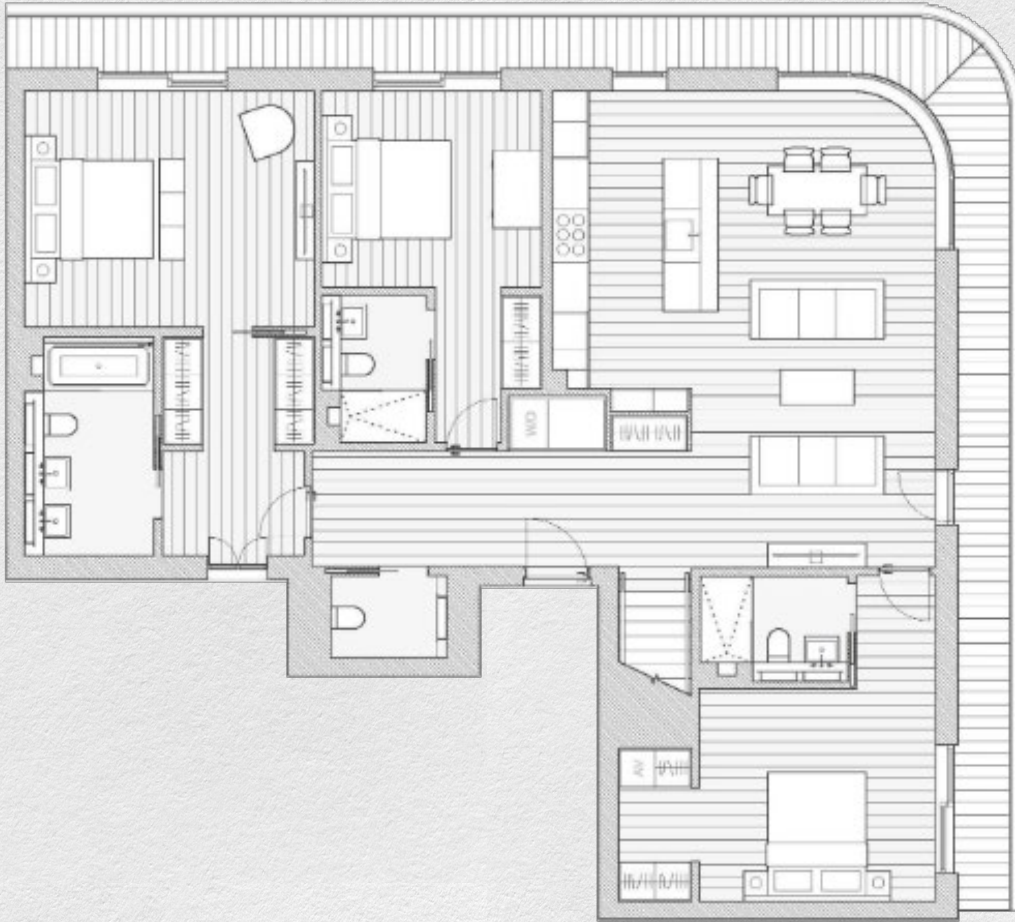
Enjoy the best of modern design and refined traditions in Marylebone with this 3-bedroom penthouse with over 800 sqft of outside space including a private roof terrace and over 1600 sqft of internal space. A rare opportunity available now !

Designed from the inside out, and with an enviable central London location, W1 Place is perfect for the discerning individual, the professional couple and the modern family.

All apartments come with generously proportioned open-plan living and kitchen areas with floor-to-ceiling bay windows, ensuring natural light and a view over the famed street. The exterior boasts a bright, natural limestone facade coupled with bronze-coloured French windows. Inspired by the distinctive glaze of Japanese porcelain, the buildings balustrades introduce additional artistic flair and texture as well as frame the windows from the outside in.

Great Portland Street acts as the unifying line between Marylebone and Fitzrovia, two vibrant neighbourhoods filled with striking architecture and an abundance of cafés, pubs, bars and eateries. Bookended by Oxford Street and Euston Road, Great Portland Street is at the very heart of these two historic districts, and indeed London itself.





Address:

W1 Place, Great Portland Street, London, W1W

	sq ft	bed	bath
<i>internal</i>	1,602	3	3
<i>roof terrace</i>	500		

*** For illustration purposes only. Could not be to scale. One-London aims to ensure accuracy but is not liable for any discrepancies.*