



## Triptych Bankside, Park Street, Southwark SE1

£900,000

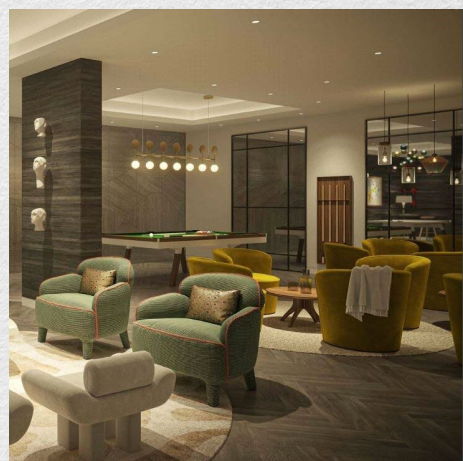
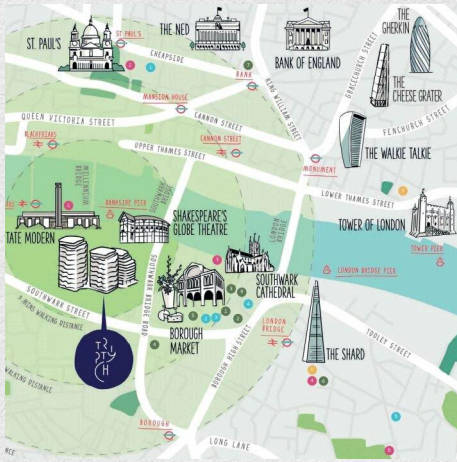
- Brand New
- Studio apartment
- 553 sq ft
- Spacious living area
- Luxury residents facilities
- Workspace areas
- Communal Gardens
- Sought after location
- 24 hour concierge
- Great transport links

*Brand new Bright and airy studio apartment in the in the sought after, newly built, Triptych development, SE1, London's Southbank*

*This apartment is finished to a high specification and benefits from own private terrace, a spacious open living area with a large, fully fitted kitchen and a modern bathroom. A very modern apartment with iPad-controlled smart lighting, usb ports and full Climate Control throughout. Contemporary technology and user experience are paramount, with iPad-controlled smart lighting, usb ports and full Climate Control throughout. Create your perfect living environment at the touch of a button.*

*Residents can enjoy an uncompromising selection of five-star style services and private amenities, ensuring holistic wellness of both body and mind. Benefit from bespoke service at the 24 hour concierge, unwind in the cinema and games rooms, or let your creative spirit soar in the private lounge and workspace.*

*Triptych Bankside puts you at the heart of the cultural kaleidoscope that is the Southbank. Within walking distance of significant landmarks, destinations and transport connections, the capital's pulse is continually at your fingertips.*





Address:

Triptych Bankside, Park Street, Southwark SE1

sq ft

400

bed/bath

studio

*\*\* For illustration purposes only. Could not be to scale. One-London aims to ensure accuracy but is not liable for any discrepancies.*