



Blacksmiths Lodge, Lindford, Hampshire, GU35

£450,000

- Three spacious bedrooms
- Three bathrooms
- Large open plan living area
- Study room, guest WC and utility cupboard
- 986 sq ft
- South facing garden
- Energy-efficient construction
- 10-year structural warranty

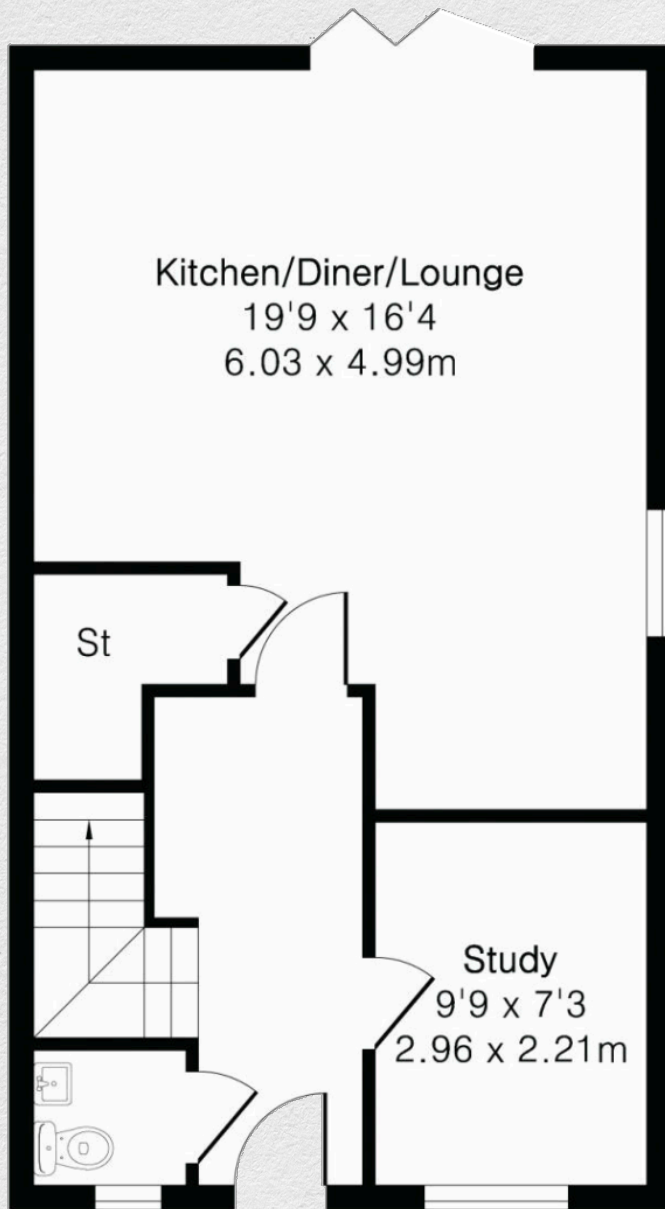
This newly built three-bedroom house at Blacksmiths Lodge offers approximately 986 sq ft of internal accommodation and has been carefully conceived for buyers who want a new home without compromise or conformity.

The house is arranged over two floors and has a calm, well-judged layout that works effortlessly day to day. On the ground floor, a dedicated study, guest WC and utility cupboard sit neatly alongside a large open-plan kitchen and dining space, designed as the focal point of the home. Full-width bi-folding doors open directly onto a south-facing garden, drawing light into the space and creating a strong connection between inside and out. The garden itself is fully fenced, private and secure, offering a peaceful setting with excellent privacy.

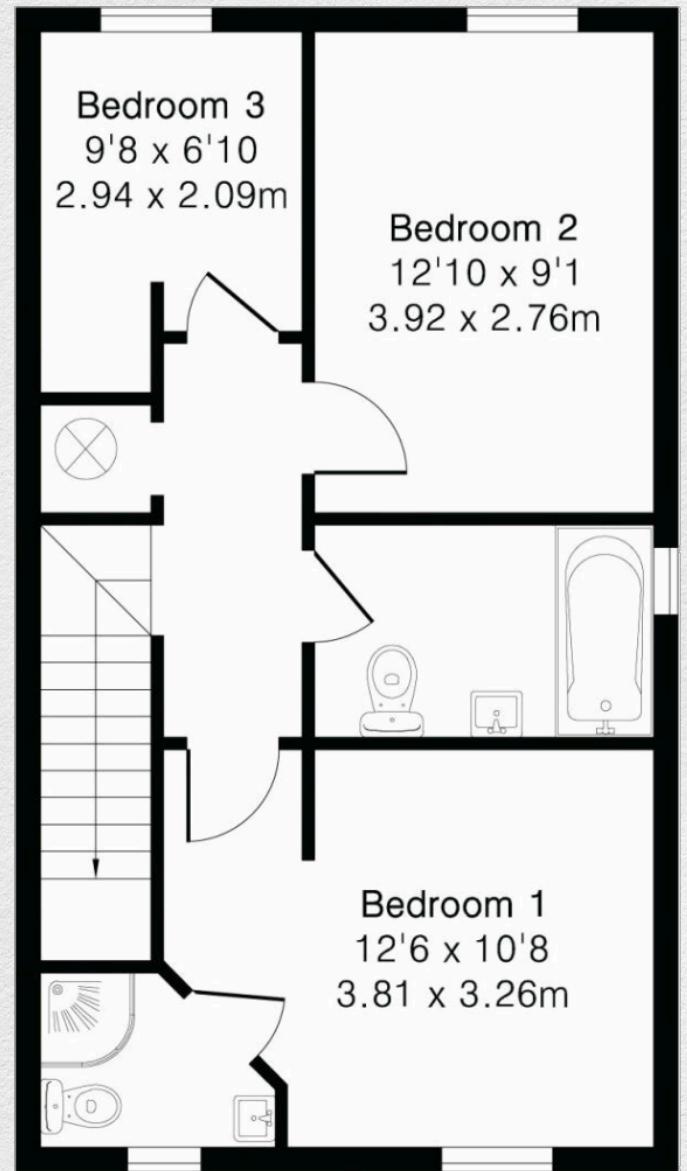
The first floor is arranged around a principal bedroom with en-suite, a generous family bathroom, and two further bedrooms, both enjoying views over the garden. Bathrooms and cloakrooms are finished to a high standard, providing a refined backdrop to the remaining accommodation.

Further details available upon enquiry.





Ground Floor



First Floor

Address:

Blacksmiths Lodge, Lindford, Hampshire

sq ft

986

bed

3

bath

3

*** For illustration purposes only. Could not be to scale. One-London aims to ensure accuracy but is not liable for any discrepancies.*