



## Westmark Tower, London, W2

£1,300,000

### FOR SALE — Luxurious Two-Bedroom Apartment in West End Gate

A beautifully presented two-bedroom, two-bathroom apartment situated on the 19th floor of the prestigious West End Gate development by Berkeley Homes. Spanning 1,009 sq. ft (93,8 sqm), this bright and spacious home offers elegant modern living in one of Central London's most desirable addresses.

Key features include; Private balcony with expansive south facing views; Floor-to-ceiling windows providing excellent natural light; Large open-plan reception and dining area; Fully fitted modern kitchen with integrated appliances; Master bedroom with en-suite and built-in wardrobes; Second double bedroom and additional family bathroom; Comfort cooling throughout

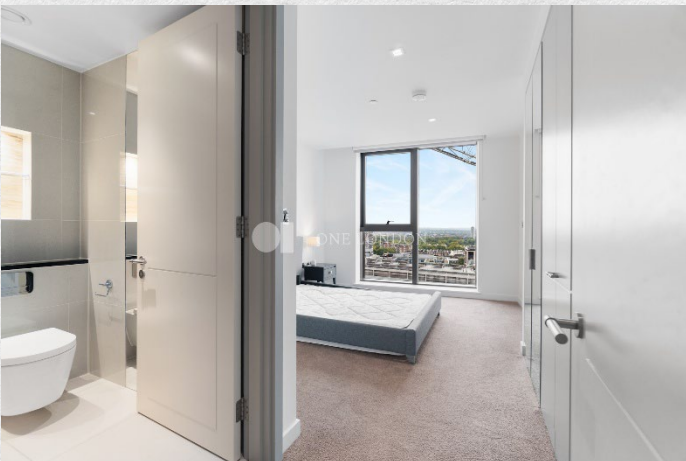
Five start resident's amenities comprise of 24-hour concierge and security; Residents' gym, spa, and luxury swimming pool with jacuzzi and steam room; Private cinema room, residents' lounge, co-working spaces, and treatment rooms; Private dining space with private kitchen for entertaining guests

- 19<sup>th</sup> floor apartment
- Large two-bedroom, two-bathroom
- 1,009 sq ft internal space
- 24 hr concierge
- Residents' gym
- Swimming pool
- Steam Room & Sauna
- Comfort cooling and South/Hyde Park facing balcony

Just moments from Edgware Road and Paddington stations, offering exceptional connectivity via: Bakerloo, Circle, District, Hammersmith & City lines. Easy access to Hyde Park, Regent's Park, Little Venice, and Oxford Street. A short walk to world-class shopping, dining, and cultural attractions.

This is an outstanding opportunity to acquire a premium residence in a vibrant and well-connected London location









Address:

Westmark Tower, London, W2

sq ft

1,009

bed

2

bath

2

*\*\* For illustration purposes only. Could not be to scale. One-London aims to ensure accuracy but is not liable for any discrepancies.*