



Westmark Tower, London, W2

£695,000

An exceptional opportunity to acquire a one-bedroom, one-bathroom apartment located on the 7th floor of the prestigious Westmark Tower, part of the renowned West End Gate development by Berkeley.

- 7th floor apartment
- 1 bedroom
- 1 bathroom
- 540 sq ft
- Residents' gym
- Swimming pool
- Steam room & Sauna
- 24 hr Concierge
- Comfort cooling and South facing balcony
- Landscaped communal garden
- Competitively Priced for a Quick Sale

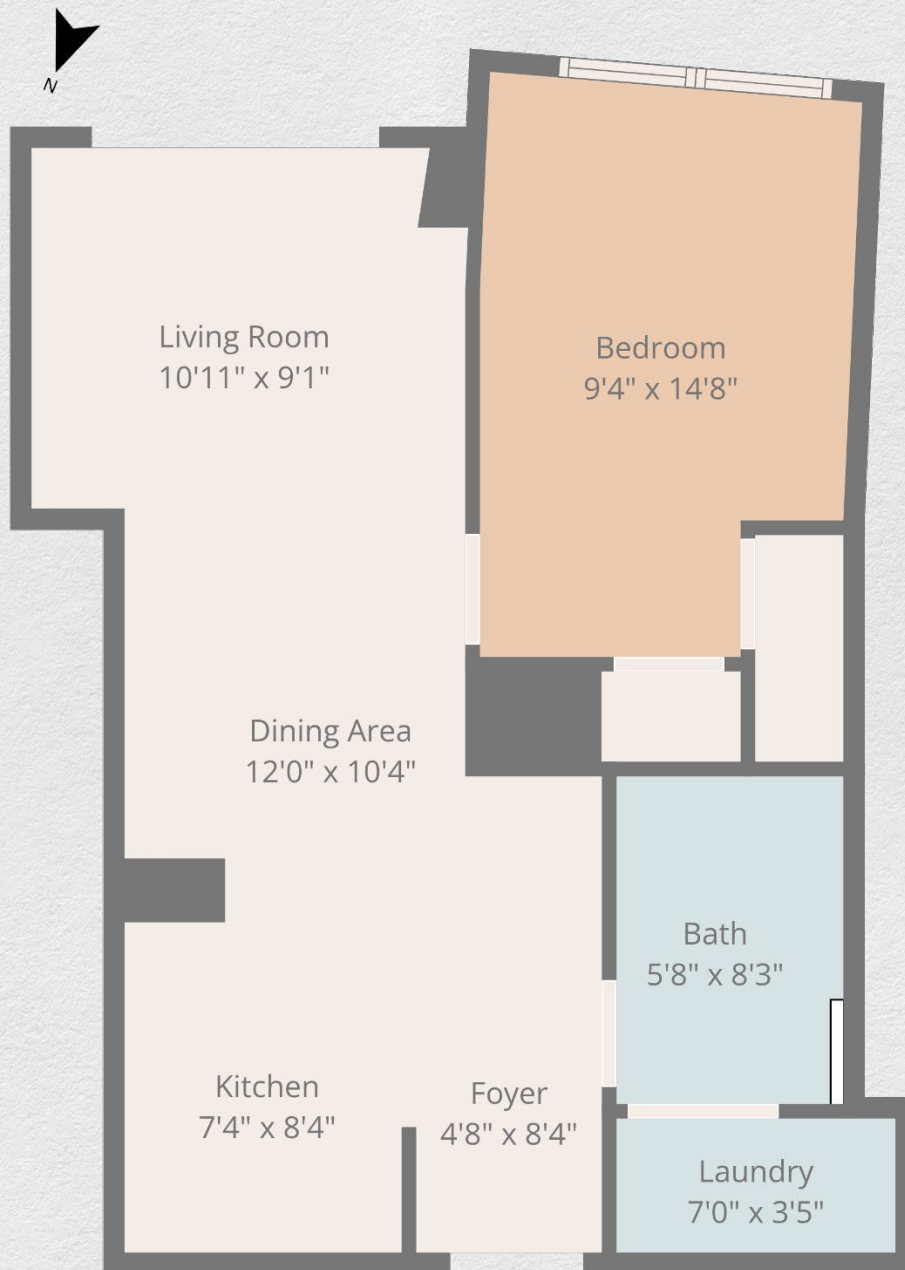
This bright and modern apartment features an open-plan living area seamlessly integrated with a contemporary kitchen, complete with sleek, high-spec appliances. Floor-to-ceiling south-facing windows flood the space with natural light, creating a warm and inviting atmosphere.

The spacious bedroom offers a peaceful retreat with generous built-in floor-to-ceiling wardrobes, while comfort cooling ensures year-round comfort.

Residents of Westmark Tower enjoy exclusive access to world-class amenities, including: 24-hour concierge service. Private residents' gym, swimming pool, cinema, co-working spaces, private dining room and kitchen, treatment rooms and a beautifully landscaped communal garden oasis.

This property is ideal for first-time buyers, professionals, or investors seeking a prime location with luxury living in the heart of London.





Address:

Westmark Tower, London, W2

sq ft

540

bed

1

bath

1

**** For illustration purposes only. Could not be to scale. One-London aims to ensure accuracy but is not liable for any discrepancies.**