

## Sherrin House, Royal Warwick Square, London, W14

£1,379,800

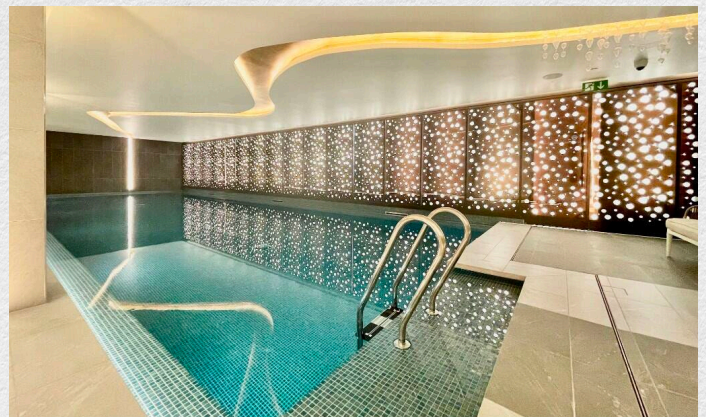
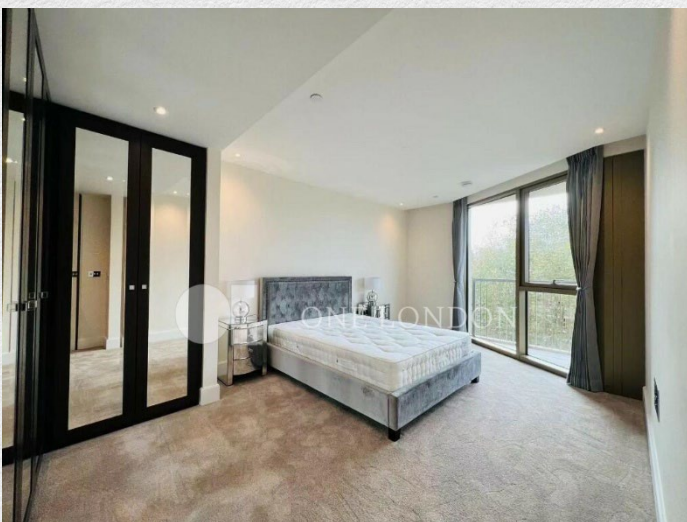
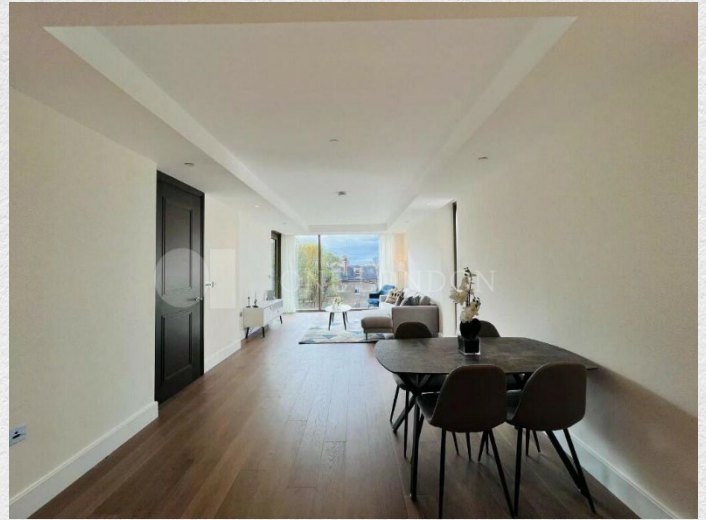
- 2 bedrooms
- 2 bathrooms
- Private panoramic balcony
- 1,054 sq ft
- Resident's gym, swimming pool, spa & Cinema
- Desirable location.
- 24-hour concierge
- Excellent transport links

*Beautifully finished apartment located in Royal Warwick Square, very close to Kensington High Street.*

*This spacious 1,054 sq ft apartment comprises of 2 large bedrooms, 2 bathrooms, a very large open plan living/dining/reception area, a utility/coat room and a private terrace. The master bedroom which leads onto the private balcony is en-suite with a walk-in wardrobe. The second bedroom also leads onto the private balcony and has fitted wardrobes.*

*Residents benefit from secure living with 24-hour concierge and the use of luxury facilities including gym, swimming pool and spa. Royal Warwick Square is located very close to Kensington High Street with easy access into Central London and also a direct route to Heathrow airport.*

*Royal Warwick Square is nestled in the heart of the Royal Borough of Kensington & Chelsea, an area renowned for its timeless elegance and prime residential appeal. The development enjoys proximity to some of London's most illustrious neighbourhoods, including Holland Park, Knightsbridge, and Chelsea—each celebrated for its distinctive charm and luxury.*





Address:

Sherrin House, Royal Warwick Square, London, W14

sq ft    bed    bath

1054    2    2

*\*\* For illustration purposes only. Could not be to scale. One-London aims to ensure accuracy but is not liable for any discrepancies.*