



St Germans Place, Blackheath, London, SE3

£1,300,000

- Duplex Penthouse Apartment
- 3 bedrooms
- 3 bathrooms
- Spacious 1,950 sq ft living space
- Roof terrace
- Double garage
- 3 reception rooms
- Sought after location.
- 1,344 sq ft Private Garden
- Panoramic views

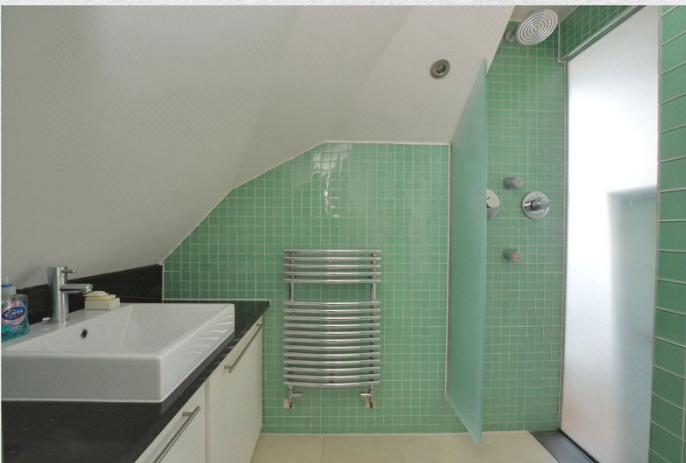
Spacious three double bedroom duplex penthouse apartment located in a beautiful Grade II listed building.

This 1,950 sq ft apartment is arranged over the third and fourth floors and comprises of; a private garden, double garage, private terrace with spectacular views in Blackheath, 35ft dual aspect reception room, ample storage space throughout, classic features including chimney breasts. The kitchen is modern with high quality built in appliances and granite worktops.

There is also a 1,344 sq ft private section of garden, two garages with off street parking in front.

The top floor double bedroom has built in wardrobes and views out to the rear and a modern family bathroom. There is a second double bedroom with built in wardrobes and a separate WC. The master bedroom also has built in wardrobes, ensuite shower room, separate WC and direct access to the large private terrace.

Directly fronting the heath and overlooking towards Greenwich Park, Canary Wharf, the City and even the Crystal Palace mast.





Address:

St Germans Place, Blackheath, London, W1

sq ft bed bath

1,950 3 3

*** For illustration purposes only. Could not be to scale. One-London aims to ensure accuracy but is not liable for any discrepancies.*