



## Lanchester Court, Tyburnia, London, W2

£4,300,000

- 4 bedrooms
- 4 bathrooms
- Spacious dining area
- Double reception
- 2,100 sq ft
- 4<sup>th</sup> floor
- Private balcony
- 24 hr concierge
- Fitted wardrobes
- Sought after location
- Close to Hyde Park

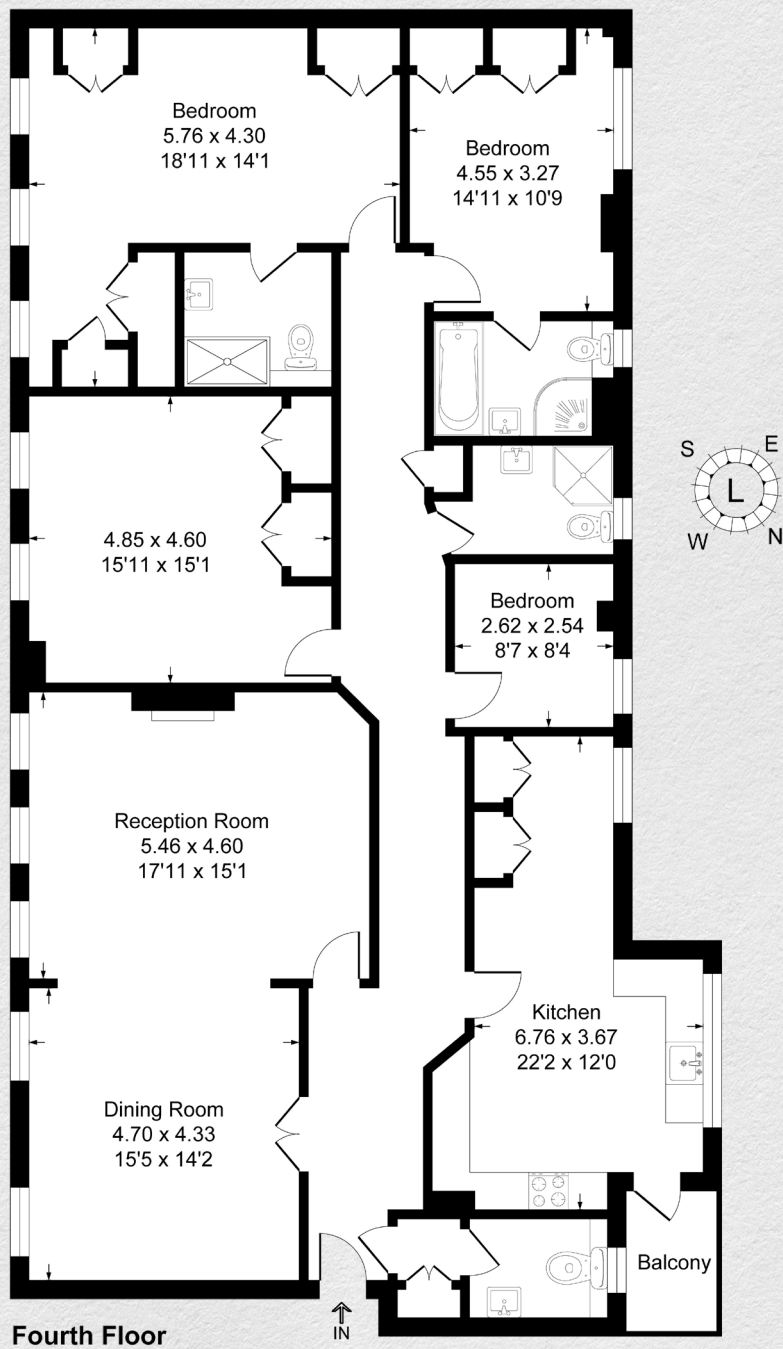
*Very spacious four-bedroom apartment in the desirable Lanchester Court, London.*

*This 2100 sq ft. apartment consists of a large open plan kitchen/dining area with built in Miele appliances perfect for entertaining, a double reception room, four bedrooms (2 en-suite) with fitted wardrobes, a private balcony and plenty of storage space.*

*Enhancing the comfort of this residence, air-conditioning has been seamlessly integrated, providing a cool and refreshing environment during warmer seasons. Convenience is elevated with a lift for easy access, and the presence of a live-in concierge ensures a secure and well-maintained environment.*

*Situated in Seymour Street, this residence enjoys a prime location close to Hyde Park, Marble Arch Underground Station, and the vibrant West End. Whether you seek a peaceful retreat or easy access to London's cultural and entertainment hub, this property offers the best of both worlds*





Address:

Lanchester Court, Tyburnia, London, W2

sq ft	bed	bath
2,100	4	4

*\*\* For illustration purposes only. Could not be to scale. One-London aims to ensure accuracy but is not liable for any discrepancies.*