



Oakley House, Battersea Roof Gardens London, SW11

£2,600 pcm

- Brand new
- Studio apartment
- Spacious dining area
- 492 sq ft
- Private conservatory
- Luxury residents' facilities
- Sought after location.
- 24-hour concierge
- Great transport links

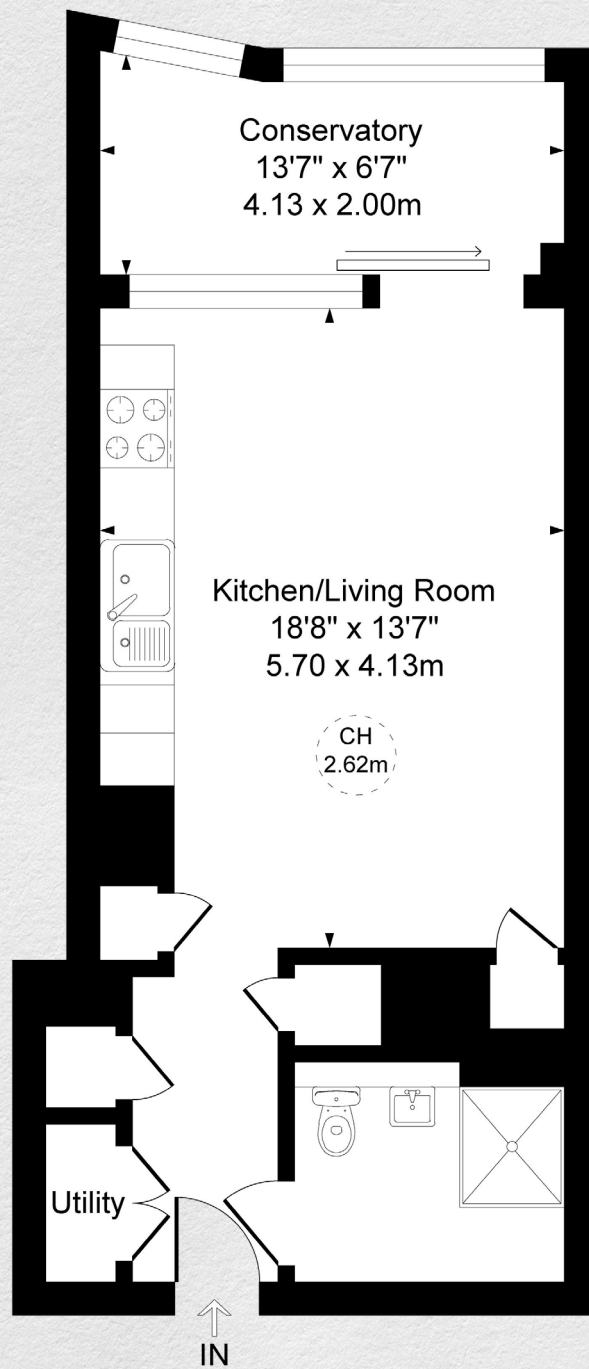
Brand new, stunning studio apartment set within a beautifully designed development benefitting from access to all hotel facilities of Art'otel including a rooftop infinity pool.

Set within the iconic Battersea Power Station, this apartment offers exceptional accommodation. The property opens to a spacious open-plan reception room and kitchen with modern integrated appliances and utility space. There is plenty of space for dining and entertaining and floor-to-ceiling windows with sliding doors that open onto a private conservatory.

Residents of Oakley House benefit from a 24-hour concierge, gym and swimming pool and other luxury amenities.

A vibrant new destination for London, housing a community of homes, shops, cafes, offices, leisure, and cultural venues, with over 19 acres of public space.





Address:

Oakley House, Battersea Roof Gardens, London, SW11

sq ft

492

bed

studio

*** For illustration purposes only. Could not be to scale. One-London aims to ensure accuracy but is not liable for any discrepancies.*