



Hyde Park Square, London, W2

£900,000

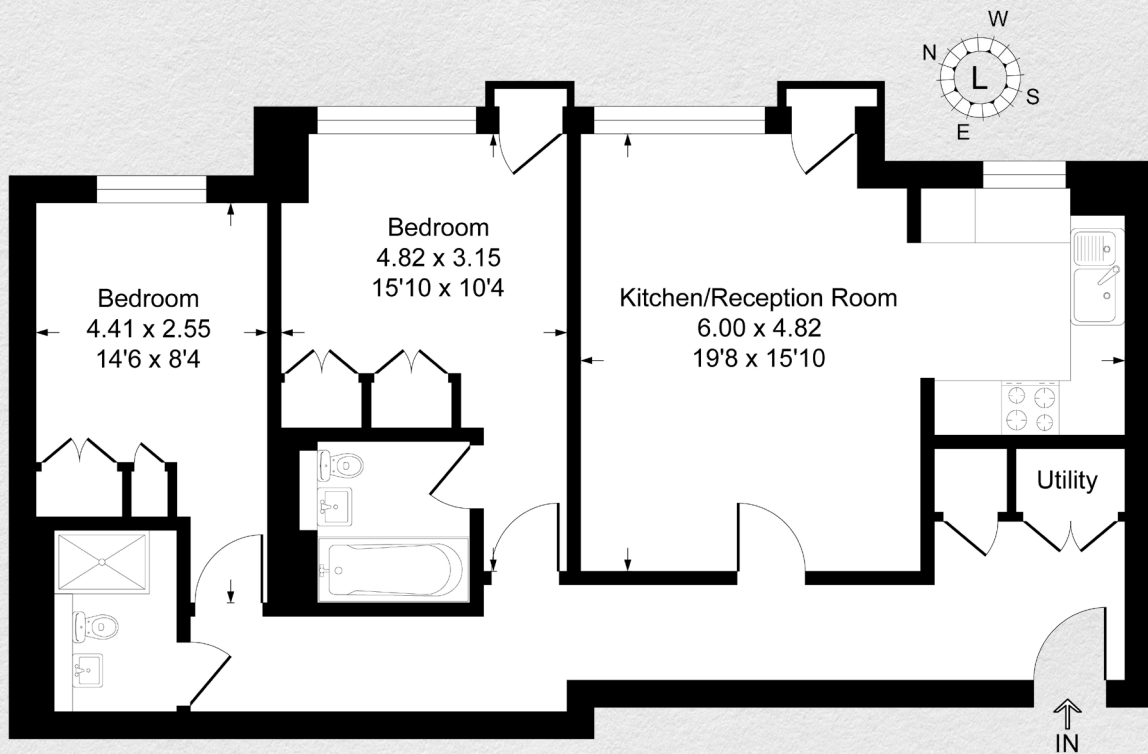
- 2 bedrooms
- 2 bathrooms
- Comfort cooling throughout
- 758 sq ft
- Prestigious location
- 24 hour concierge
- Lift access
- Great transport links

A superbly laid out two-bedroom, two-bathroom apartment set on the second floor of No2 Hyde Park Square, 24hr concierge with lift access, fob activated entrance and lift offering both security and ease of living.

Spanning approximately 758 sq. ft, this apartment offers a spacious reception room/ kitchen. The layout is thoughtfully designed, with two double bedrooms, two bathrooms (one ensuite).

Hyde Park Square is one of London's most prestigious garden squares, moments to Connaught Village and London's Hyde Park. Transport links are close by with Paddington, Marble Arch & Lancaster Gate all a short distance away





Address:

Hyde Park Square, London, W2

sq ft

758

bed

2

bath

2

*** For illustration purposes only. Could not be to scale. One-London aims to ensure accuracy but is not liable for any discrepancies.*