



Hyde Park Square, London, W2

£1,250,000

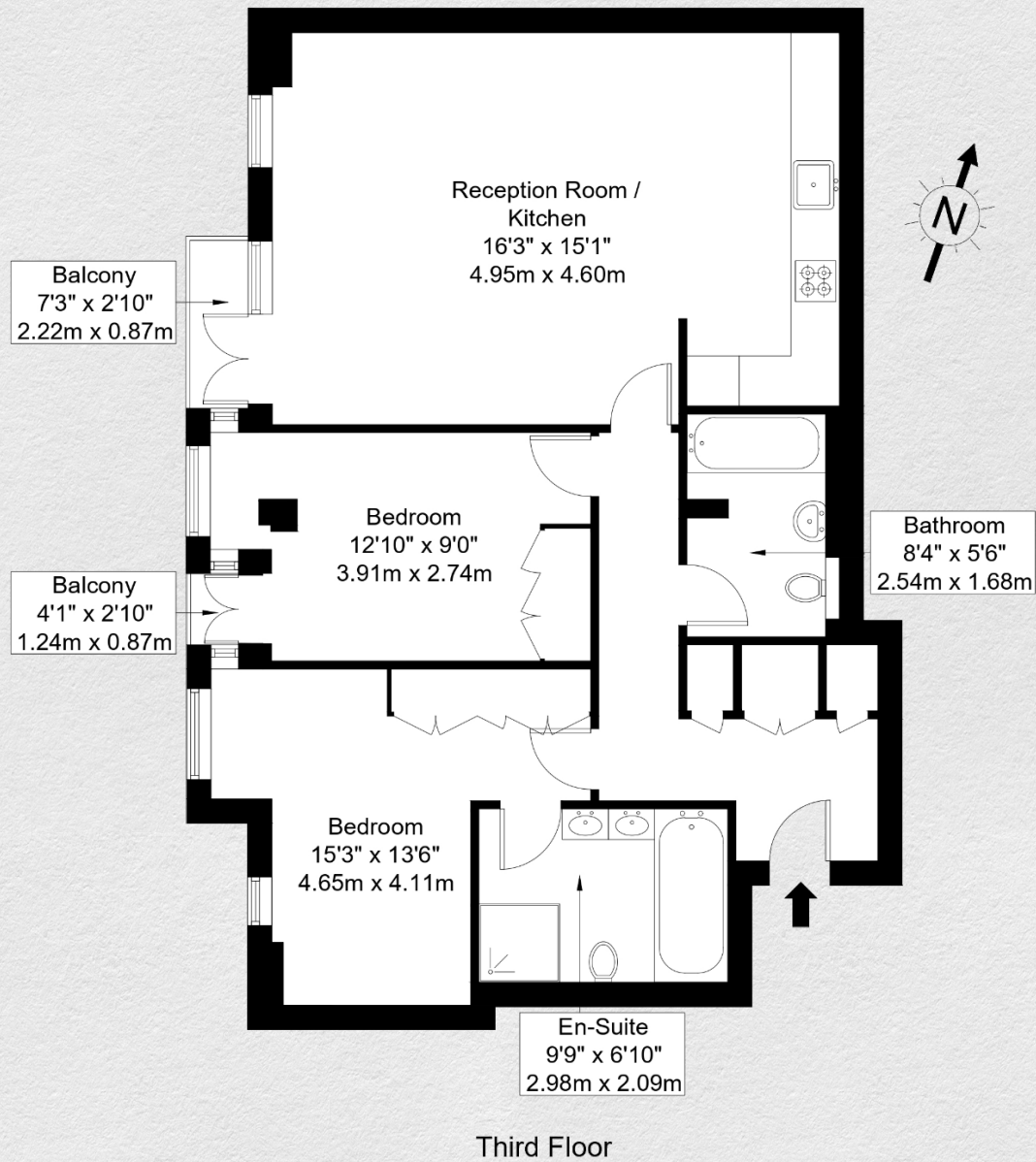
- 2 bed – 2 bath
- Balcony
- Hyde Park Square/ garden facing
- 928 sq ft
- Comfort cooling
- Secure underground parking and storage unit
- 24 hr concierge and lift access
- Moments from London's Hyde Park and Connaught Village

A superbly laid out two-bedroom, two-bathroom apartment set on the third floor of No2 Hyde Park Square, 24hr concierge with lift access, fob activated entrance and lift offering both security and ease of living.

Spanning approximately 928 sq. ft, this apartment offers a spacious reception room with direct access to a private balcony. The layout is thoughtfully designed, with two double bedrooms, two bathrooms (one ensuite), and ample storage throughout.

The property also benefits from secure underground parking and a storage unit. Moments from London's Hyde Park Square and the stunning Connaught Village.





Address:

Hyde Park Square, London, W2

sq ft

928

bed

2

bath

2

**** For illustration purposes only. Could not be to scale. One-London aims to ensure accuracy but is not liable for any discrepancies.**